

# MIYOTA

MOVEMENT SPECIFICATIONS

## CAL. : 6P73/6P75/6P77/6P79

**10-1/2 LINGE, MULTI FUNCTION WITH *HIGH HAND***

**ANALOGUE QUARTZ, NO JEWEL**

BY CITIZEN WATCH CO., LTD. JAPAN

MANUFACTURED IN JAPAN

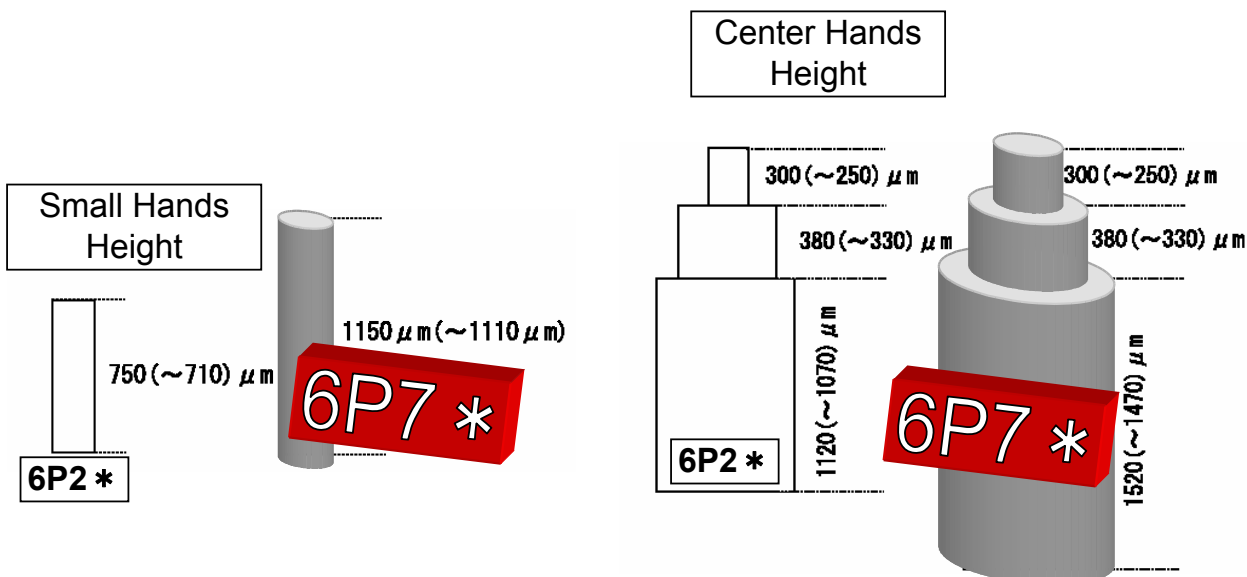
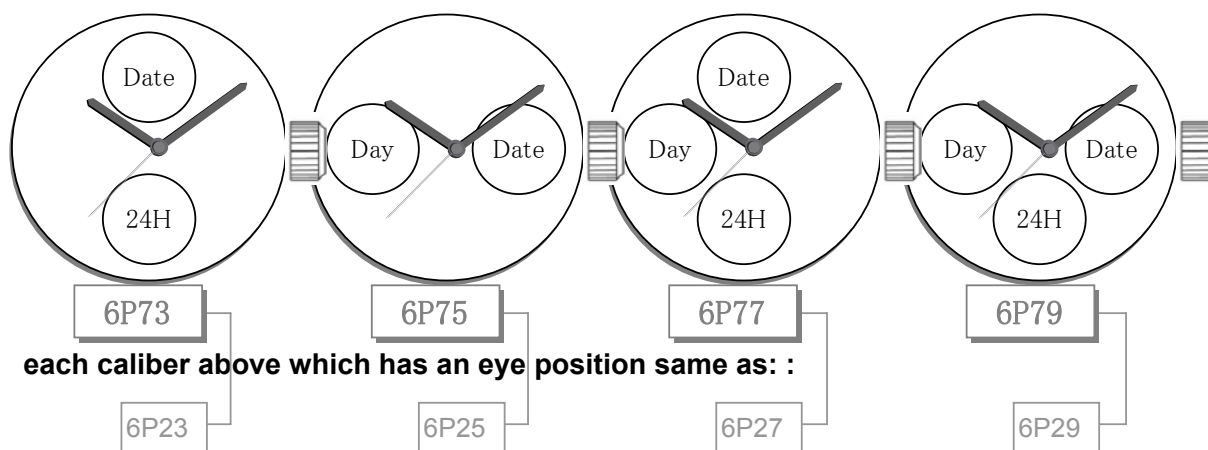
### 1. BASIC SPECIFICATIONS

(1) Cal. No.

\*TO CONFIRM WITH MOV'T DRAWING ATTACHED

CALIBRE	6P73	6P75	6P77	6P79
Ligne	10-1/2			
Size*mm	22.6 × 22.6 × Φ23.3mm			
Date	12H	3H	12H	3H
Day	×	9H	9H	9H
24Hour	6H	×	6H	6H
Total height	3.45mm			
Battery life	Approx. 3 years			
Battery	SILVER OXIDE SR621SW or equivalent			

These calibers above which has an **HIGH HAND** structure:



(2) Time standard

Type of quartz : Tuning fork type quartz crystal  
Frequency : 32,768Hz  
Accuracy : **+/-20 s/month** worn under normal circumstances

(3) Balanceable weight of hand

Minute hand : Max. 0.4 μN.m  
Second hand : Max. 0.07 μN.m  
Small hands : Max. 0.02 μN.m

(4) Function

24hour, date and retrograde day indicator by small hands.  
Powercell Saving Reset Mechanism (PSRM)  
Over-loading Compensation Device (OLCD)  
Digital Frequency Control (DFC) for time adjustment

**2.SEPARATED PARTS**

**Setting stem x1**

Code 065-379  
Length from movement center to far end 20.03mm  
of setting stem  
Thread..... Φ0.9mm x 12.18mm

**3.OTHERS**

**\* Measurement of time rate**

The unit (gate) time of measurement must be set at "10 sec." or integer fold value of 10 sec. owing to the DFC system, and the measurement must be performed in the form of complete watch.

**\* Marking on movement**

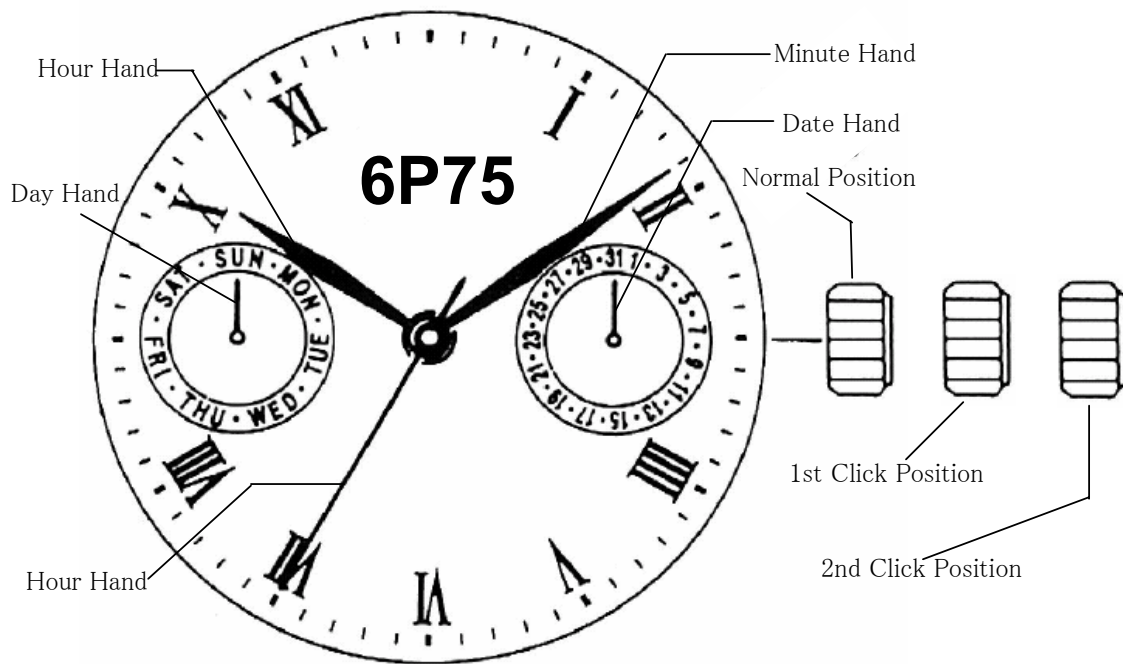
**JAPAN  
MIYOTA CO.  
6P73/75/77/79  
NO JEWELS**

**\* Typical clearance**

Mov't - Caseback minimum 150 microns  
Top of hands - Glass 300 - 400 microns \*  
\* subject to the glass, case structure, and the length of hand

#### 4. INSTRUCTIONS MANUAL

##### A) DISPLAYS



##### B) SETTING THE TIME

For 6P73,6P75,6P77,6P79

1. Pull the crown out to the 2nd Click Position.
2. Turn the crown to set hour and minute hands.

##### C) SETTING THE DATE

For 6P73,6P75,6P77,6P79

\*Please do not set the date between 9:00 PM and 1:00AM.

1. Pull the crown out to the 1st Click Position.
2. Turn the crown counter-clockwise to set the date.
3. After the date has been set, push the crown back to the normal position.

##### D) SETTING THE DAY

For 6P75,6P77,6P79

1. Pull the crown to the 2nd Click Position.
2. Turn the crown clockwise to gain the hour and minute hand.
- \*The day changes between 0:00 and 5:30AM.
3. After the day has been set, push the crown back to the normal position.

##### E) 24HOUR

For 6P73, 6P77, 6P79

24Hour hand moves linked with the hour hand.

*These specifications might be changed without prior notice.*

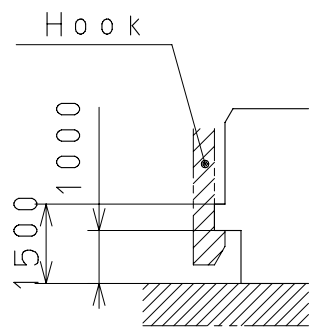
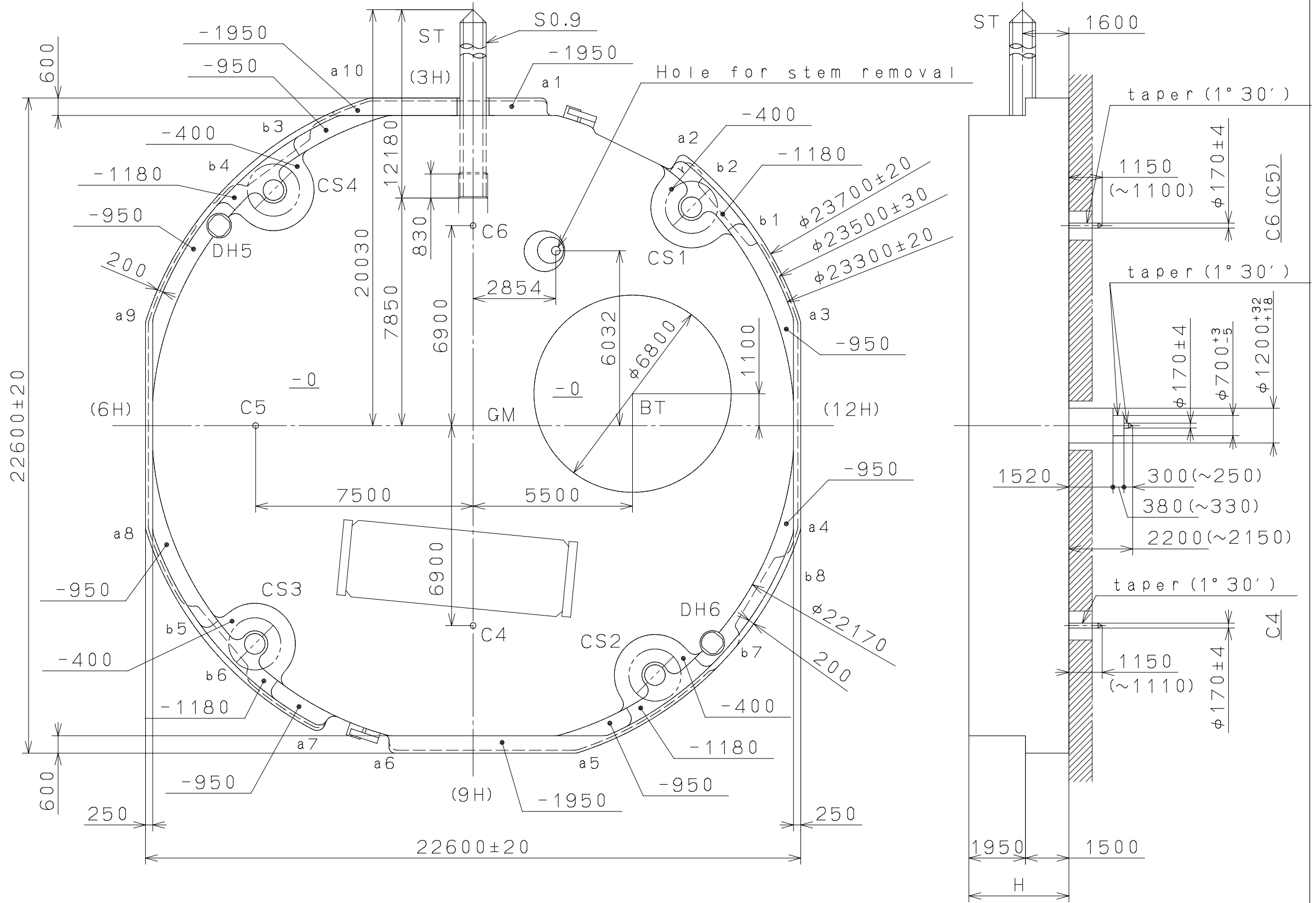
2007/12/27 (08:34:02)

This drawing is provisional and subject to our reconfirmation and/or revision without notice.

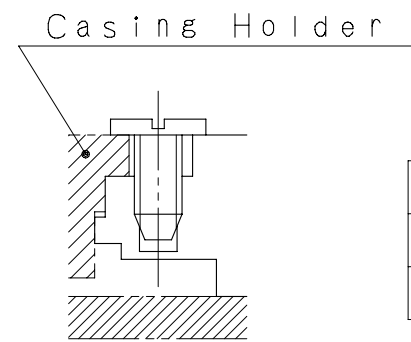
DH5~DH6=22287 (±20)

Coordinates

記号	X	Y	R
GM	0	0	—
DH5	-8759	6900	—
DH6	8251	-7500	—
a1	2351	11100	200
a2	7235	9131	200
a3	10800	3490	500
a4	10800	-3490	500
a5	3490	-10800	500
a6	-2700	-11100	200
a7	-5389	-10216	300
a8	-10800	-3490	500
a9	-10800	3490	500
a10	-3490	10800	500
b1	9581	6360	150
b2	7928	8331	150
b3	-5773	9946	150
b4	-7839	8415	150
b5	-9572	-6374	150
b6	-7916	-8342	150
b7	9196	-6906	150
b8	10501	-4690	150



Section b1~b8



Section CS1~4

	H
With Battery strap	3600
Without Battery strap	3450

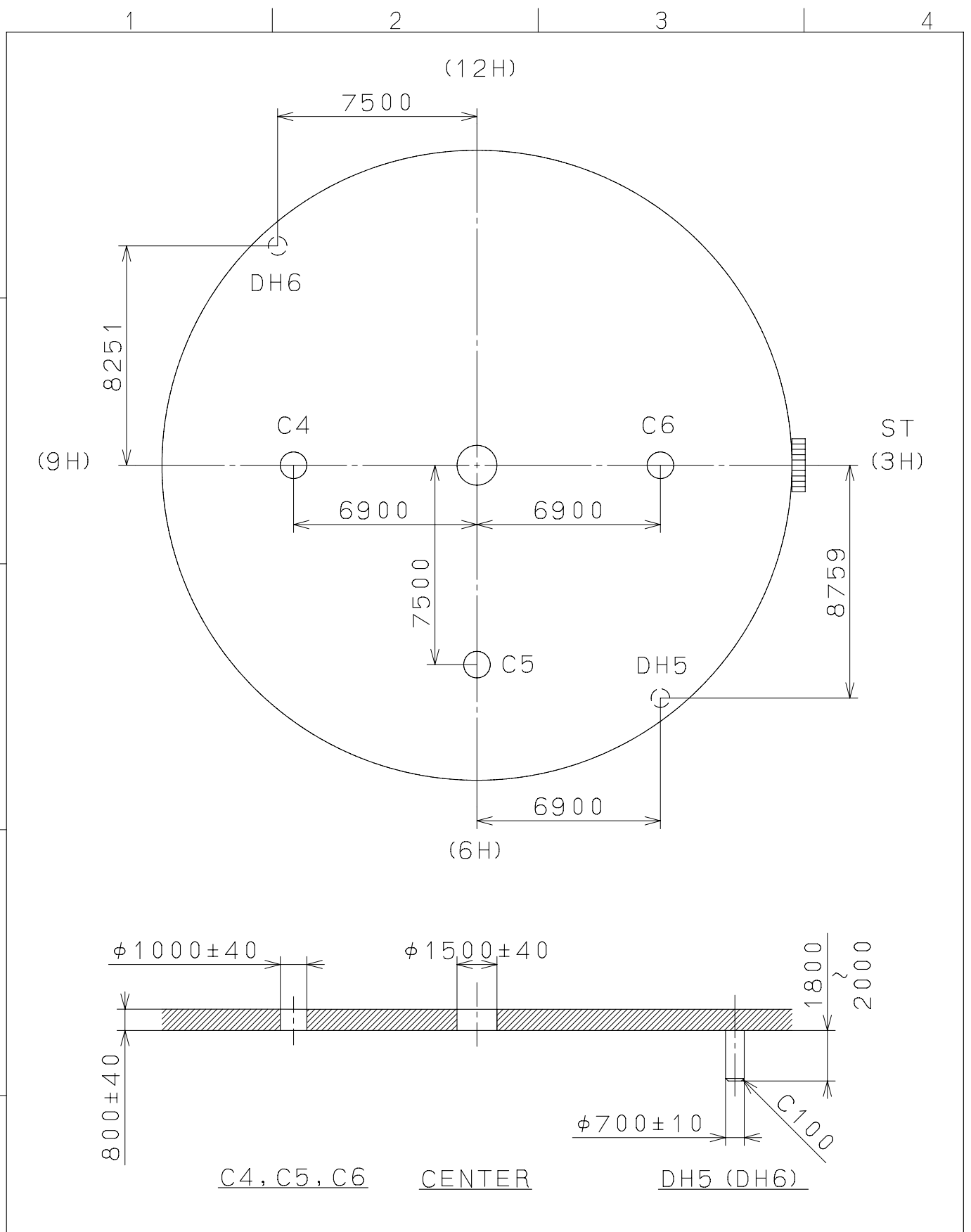
△		Quantity		Cal. NO.:
△		Unit	1/1000mm	6P79
△		Scale	7:1	Parts No.:
△		Date		
△		Drawn		
Mark	Date	Description	Checked	N. Suzuki
Alterations			Approved	Name:
Material				Frame for Case
Heat Treatment		General Tolerances		Drawing No.: 6P79C000
Hardness		Dimensions		
Plating		Angles		

**MIYOTA**

CITIZEN WATCH CO., LTD. TOKYO, JAPAN

2007/12/27 (08:04:52)

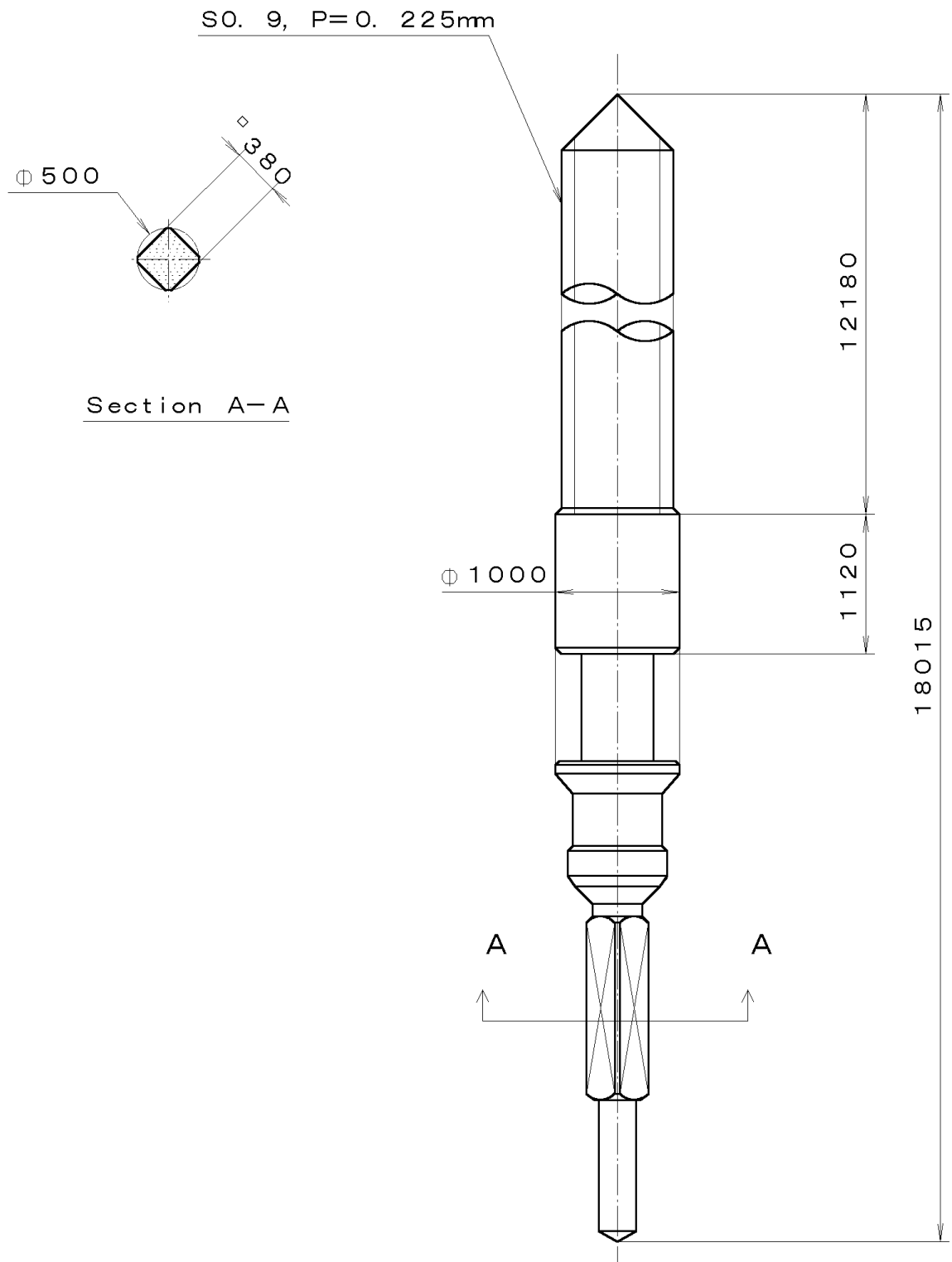
This drawing is provisional and subject to our reconfirmation and/or revision without notice.



△			Quantity		Cal.NO.:
△			Unit	1/1000mm	6P79-00A
△			Scale	5:1	Parts No.:
△			Date		
△			Drawn		
Mark	Date	Description	Appr.	Checked	Name:
		Alterations	Approved	N. Suzuki	Indications for Dial
Material					Drawing No.: 6P79D000
Heat Treatment			General Tolerances	<b>MIYOTA</b> CITIZEN WATCH CO., LTD. TOKYO, JAPAN	
Hardness			Dimensions		
Plating			Angles		

This drawing is provisional and subject to our reconfirmation and/or revision without notice.

065-379 (01) \*\*\* (2100 1121) 00-06-23



7		Quantity		Cal. No. :
6		Unit	1/1000 mm	Parts:
5		Scale	20:1	
4		Date		065-379
3		Drawn		
2		Checked	T. Hiruta	Name:
1		Approved		SETTING STEM
Material				Drawing No. : 3790S000
Heat Treatment		General Tolerances		
Hardness		Dimensions		
Plating		Angles		