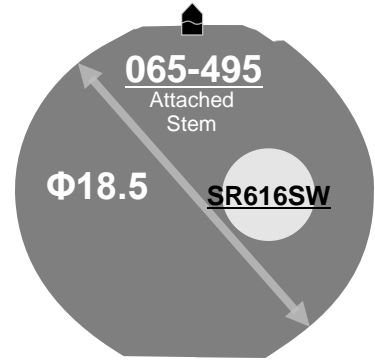


<b>Size</b> <ligne>	6 ¾ x 8'''
<b>Height</b> <mm>	2.33
<b>Accuracy</b> <per Month>	±20 sec
<b>Battery Life</b>	2 years



Battery consumption could be minimum by pulling out the stem

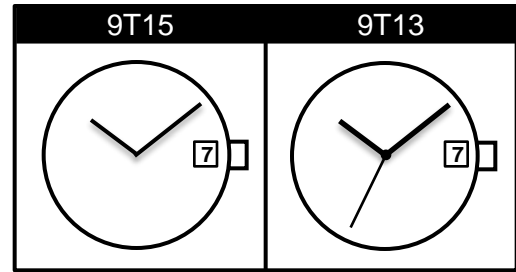
<b>Balance Weight</b> <µN.m>	Minute 0.40 Second 0.07
---------------------------------	----------------------------

<b>Clearance</b>	<p>Hand ↑ 0.30-0.40mm. case ↓ 0.15mm. Movement</p>
------------------	--

<b>Original Package</b>	1,000pcs
-------------------------	----------

7

Date

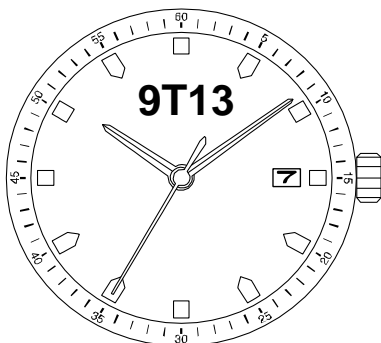


<Battery Detector Function>  
As warning second hand steps every 2 seconds  
When battery becomes nearly empty.  
(except for Cal. 9T22/15&9U15)

**Time measurement**

**Accuracy**

The unit (gate) time of measurement must be set at "10 sec." and the measurement must be performed in the form of complete watch.



Setting the Time

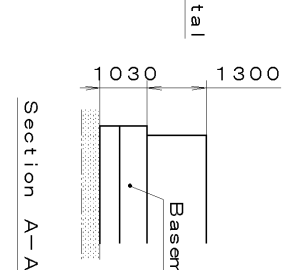
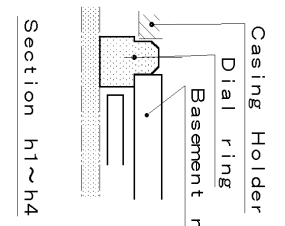
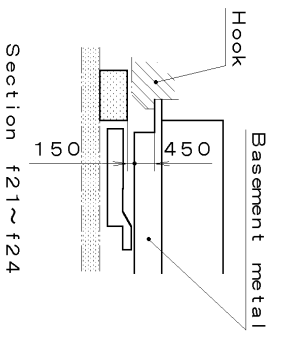
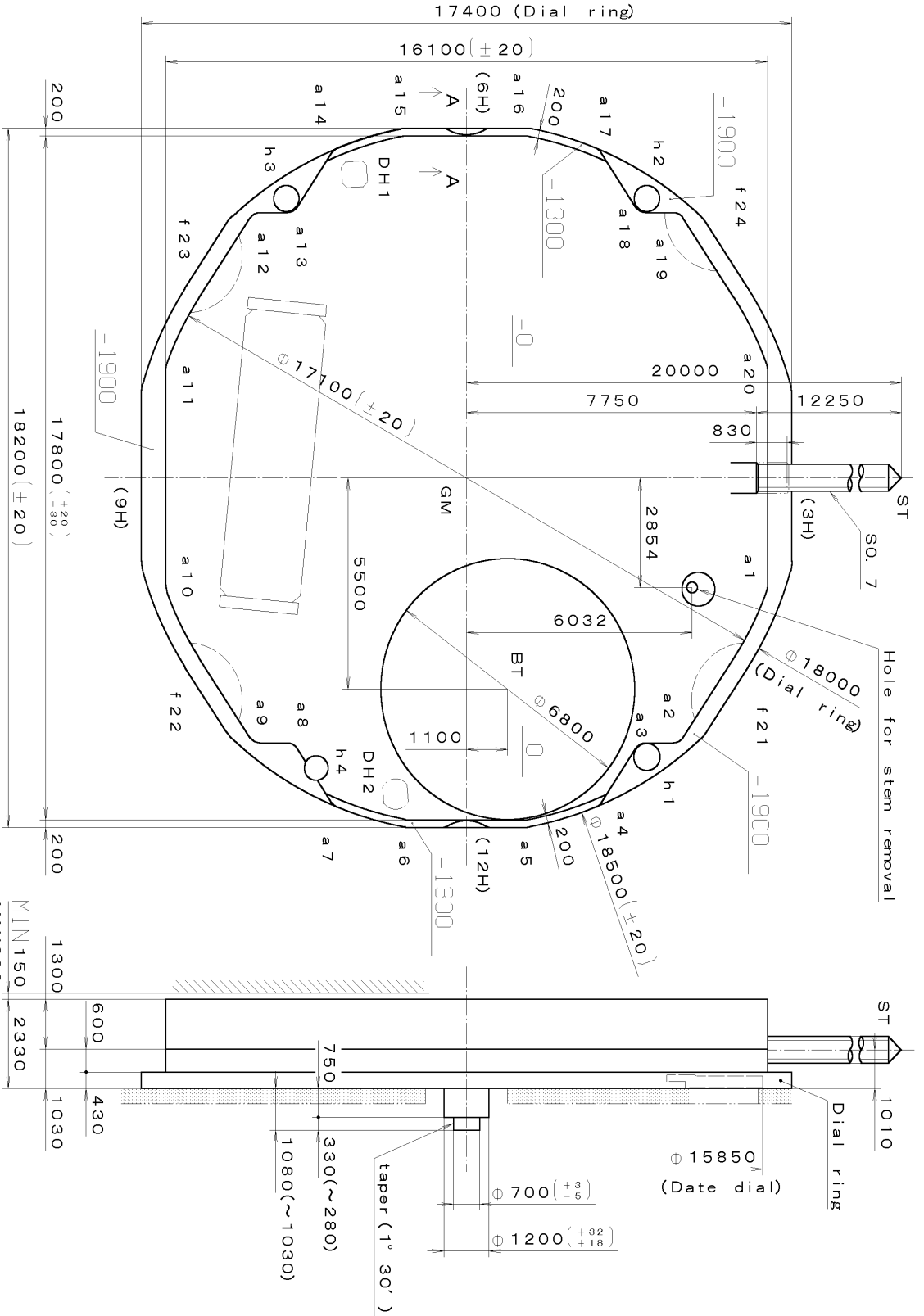
Setting the Date and Day

DO NOT set Date between 9:00pm – 1:00am

\*\*\* T1PW 9T15 (01) \*\*\* (2100 1121 ) 00-06-26

DH1~DH2=16171 (±20)

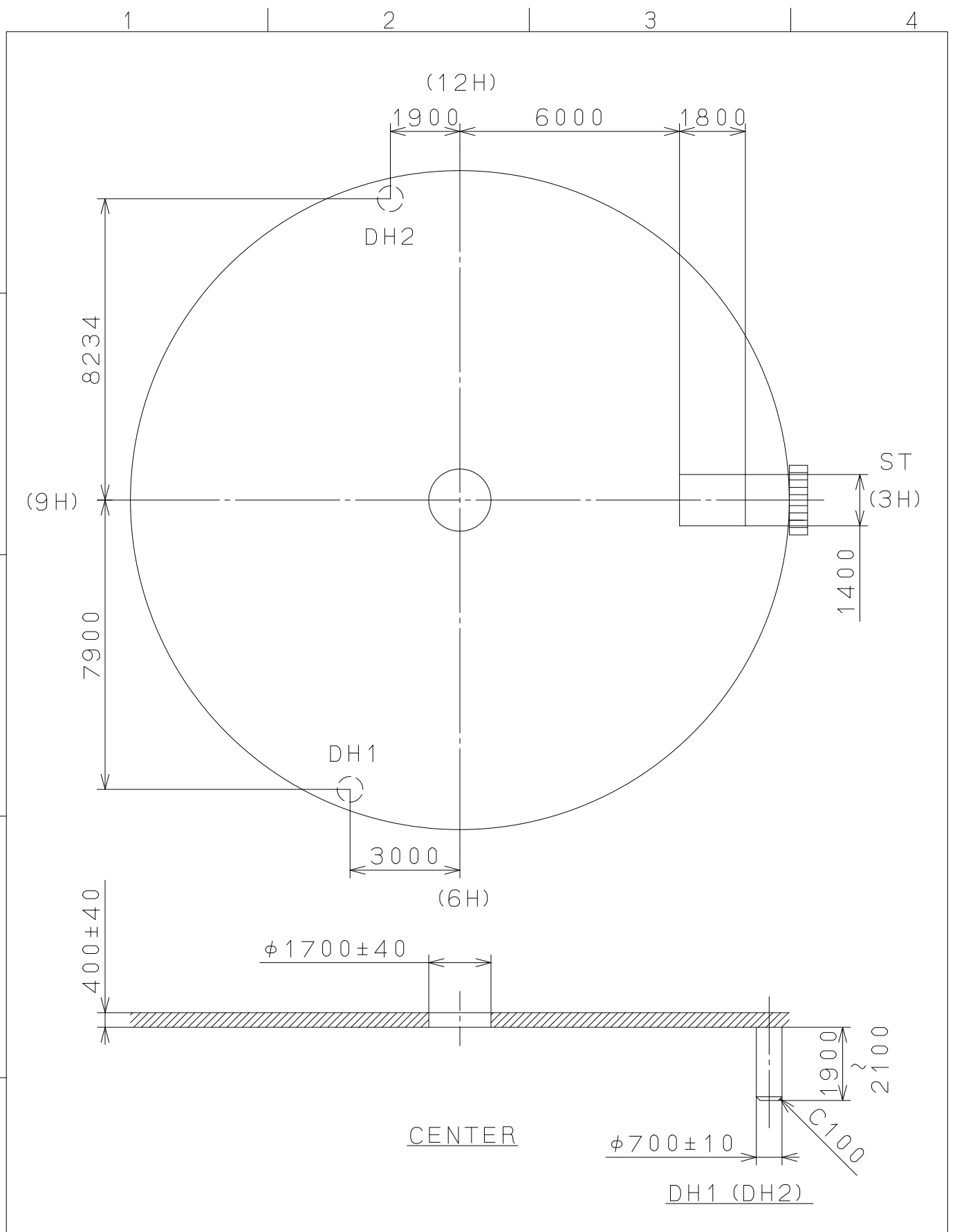
Coordinates			
Mark	X	Y	R
GM	0	0	—
h1	7270	4825	350
h2	-7270	4925	350
h3	-7270	-4825	350
h4	7557	-4025	325
DH1	-7900	-3000	—
DH2	8234	-1900	—
a1	2793	7550	500
a2	6600	5539	300
a3	7200	4787	300
a4	8289	3350	300
a5	8900	1632	300
a6	8900	-1632	300
a7	8289	-3350	300
a8	7200	-4787	300
a9	6600	-5539	300
a10	2793	-7550	500
a11	-2793	-7550	500
a12	-6600	-5539	300
a13	-7200	-4787	300
a14	-8289	-3350	300
a15	-8100	-1566	1000
a16	0	0	9250
a17	-8289	3350	300
a18	-7200	4787	300
a19	-6600	5539	300
a20	-2793	7550	500
f21	5788	7505	1500
f22	5788	-7505	1500
f23	-5788	-7505	1500
f24	-6864	6800	1500



Material	Quantity	Unit	Cal. No. : 9T15
Heat Treatment	1/1000 mm		
Hardness	Scale	9:1	
Plating	Date		
	Drawn		
	Checked	T. Hiruta	
	Approved		
General Tolerances			Name: Frame for Case
Dimensions			Drawing No. : 9T15C000
Angles			

**MIYOTA**

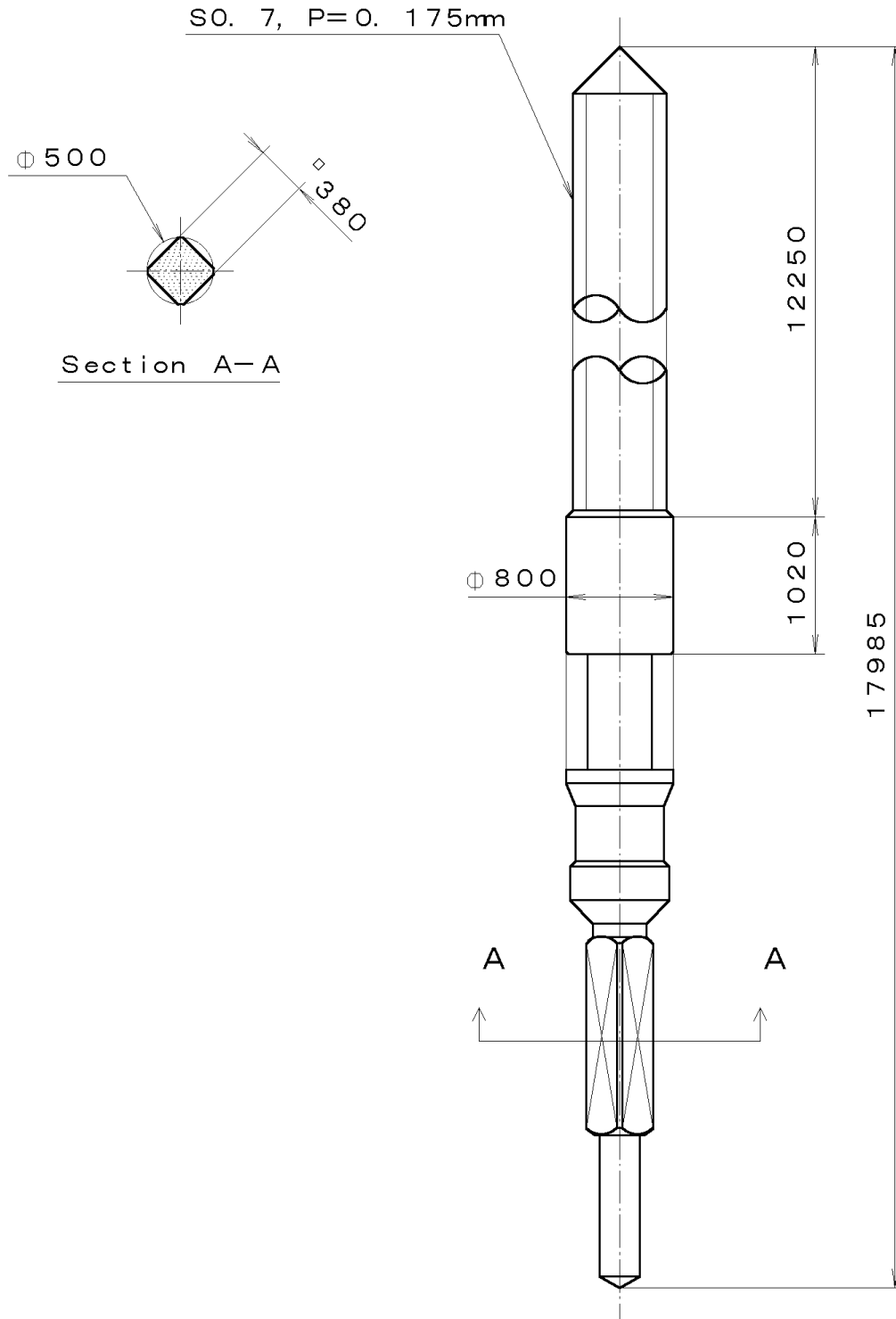
This drawing is provisional and subject to our reconfirmation and/or revision without notice.



△			Quantity		Cal.NO.:
△			Unit	1 / 1000 mm	9T15-00A
△			Scale	7 : 1	Parts No.:
△			Date		
△			Drawn		
Mark	Date	Description	Appr.	Checked	M. Kobayashi
Alterations			Approved	Name:	
Material					Indications for Dial
Heat Treatment					Drawing No.: 9T15D000
Hardness					<b>MIYOTA</b>
Plating					
					CITIZEN WATCH CO., LTD. TOKYO, JAPAN

This drawing is provisional and subject to our reconfirmation and/or revision without notice.

\*\*\* T I P W (01) \*\*\* (2100 1121 A-01 A-01 ) 00-06-22  
 065-495



7			Quantity		Ca l. No. :
6			Unit	1/1000 mm	
5			Scale	20:1	Parts:
4			Date		065-495
3			Drawn		
2			Checked	T. Hiruta	Name:
1			Approved		SETTING STEM
Material		SuS420F-DG			Drawing No. : 4950S000
Heat Treatment		焼入焼戻	General Tolerances		<b>MIYOTA</b>
Hardness		HV550	Dimensions		
Plating			Angles		