

Fermeoir dépliant avec boutons à pression ; acier inoxydable.

*Folding clasp with push buttons ; stainless steel.*

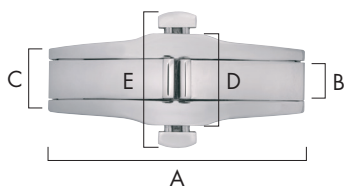
Faltschliesse mit Druckknöpfen ; Edelstahl.

*Cierre desplegable con botones a presión ; acero inoxidable.*

Chiusura pieghevole con bottoni a pressione ; acciaio inossidabile.

*Fecho desdobrável com botões de pressão ; aço inoxidável.*

MSA	A mm	B mm	C mm	D mm	Kg
51.017	<b>36.00</b>	4.00	8.00	18.00	0.005
51.020	<b>40.00</b>	6.00	10.00	22.00	0.007



Fermeoir dépliant avec boutons à pression ; acier inoxydable.

*Folding clasp with push buttons ; stainless steel.*

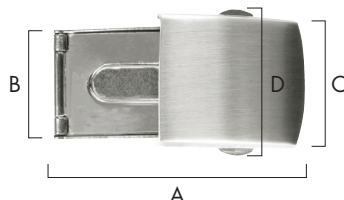
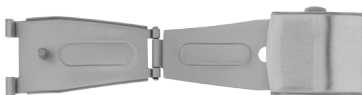
Faltschliesse mit Druckknöpfen ; Edelstahl.

*Cierre desplegable con botones a presión ; acero inoxidable.*

Chiusura pieghevole con bottoni a pressione ; acciaio inossidabile.

*Fecho desdobrável com botões de pressão ; aço inoxidável.*

MSA	A mm	B mm	C mm	D mm	E mm	Kg
51.018	<b>35.50</b>	4.50	8.00	11.00	18.00	0.006
51.009-15	<b>36.00</b>	4.00	8.00	10.00	16.00	0.006
51.019	<b>37.00</b>	4.50	8.00	10.00	16.00	0.006
51.021	<b>40.00</b>	6.00	11.00	14.00	21.00	0.010
51.009-20	<b>40.00</b>	7.00	11.00	14.00	21.00	0.009
51.022	<b>40.00</b>	7.00	11.00	16.00	23.00	0.009



Fermeoir dépliant avec boutons à pression ; acier inoxydable.

*Folding clasp with push buttons ; stainless steel.*

Faltschliesse mit Druckknöpfen ; Edelstahl.

*Cierre desplegable con botones a presión ; acero inoxidable.*

Chiusura pieghevole con bottoni a pressione ; acciaio inossidabile.

*Fecho desdobrável com botões de pressão ; aço inoxidável.*

MSA	A mm	B mm	C mm	D mm	Bracelets/Straps mm	Kg
51.023-12	34.00	10.00	12.00	17.00	<b>12</b>	0.005
51.023-14	42.00	12.00	14.00	18.00	<b>14</b>	0.005
51.023-16	42.00	14.00	16.00	20.00	<b>16</b>	0.006
51.023-18	41.50	12.00	18.00	22.00	<b>18</b>	0.006
51.023-20	42.50	14.00	20.00	25.00	<b>20</b>	0.008
51.023-22	42.00	20.00	22.00	26.00	<b>22</b>	0.008