

# Cal. 2315/2305/2350/2353

Basic analogue quartz watch movement

## 1. Basic Specification

Calibre	2315	2305	2353	2350
Ligne	11-1/2"			
Total height	4.15mm			
Hands	3			
Function	Date	Day/Date	Wide Day/Date	Enlarged Date
Battery life	3 Years			

< Time Standard >

Type of quartz: Tuning fork type quartz crystal  
 Frequency : 32,768Hz  
 Accuracy : ±20 second / month worn under normal circumstances

< Battery >

Type of battery: Silver oxide SR626SW or equivalent

< Others >

Driving system: Two-pole stepping motor  
 Jewel : No jewels

< Additional Mechanisms >

Quick Day/Date Change by turning crown  
 Second hand stopping at optional position  
 Powercell saving reset mechanism  
 Over-loading compensation device

< Balanceable weight of hand >

Minute hand Max. 0.4 μN.m  
 Second hand Max. 0.09 μN.m

## 2. Separated Parts

Calibre	2315	2305	2353	2350
Setting stem	065-299			

## 3. Remarks

< Setting stem >

Length of movement center to stem end : 20.0mm  
 Thread : Φ0.9mm x 12.38mm

< Measurement of time >

The unit time of measurement must be set at "10s" or integer fold value of 10s owing to the DFC system. And the measurement must be carried out in state of a complete watch.

< Marking on movement >

NO JEWELS  
 UNADJUSTED  
 (CAL NO.)  
 MIYOTA CO., JAPAN

< Typical clearance >

Mov't - Caseback : minimum 150  $\mu$  m or more

Hands - glass : 300 - 450 $\mu$ m\*

\* Depending and subject to the glass and case structure, and hand length.

< Bilingual day of week >

There are many kinds of bilingual day of week.

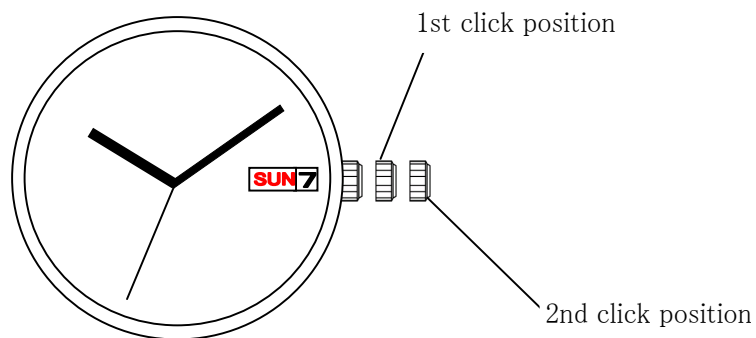
< How to set time and day/date >

Day/Date : Pull out the crown to the 1st click position.

Turn the crown clockwise for Weekday.

Turn the crown anticlockwise for Date.

Time : Pull out the crown to the 2nd click position and turn the crown until the time is set correctly.

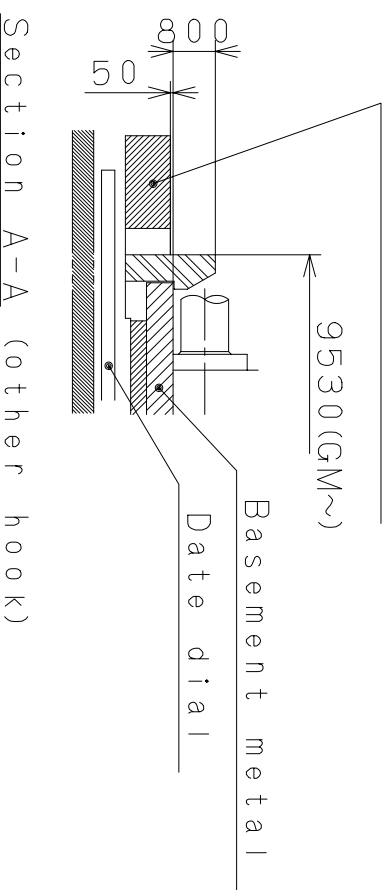
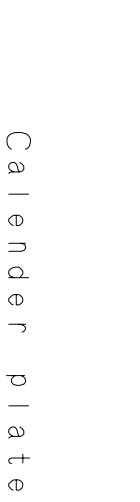
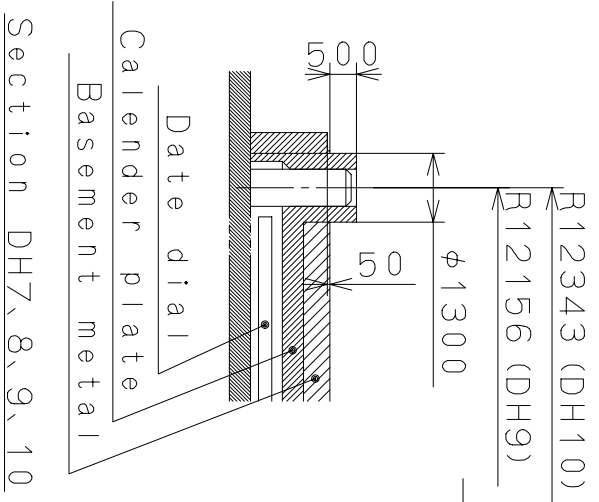
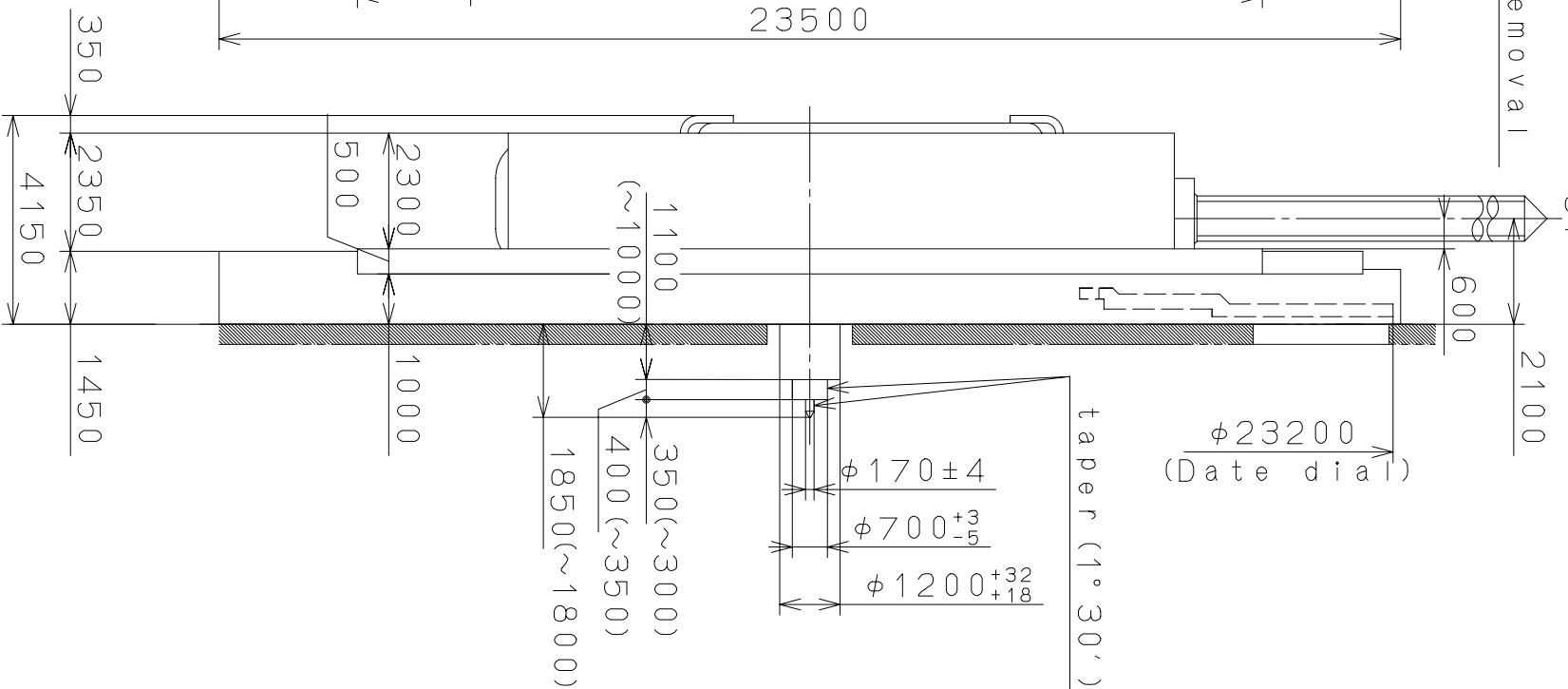
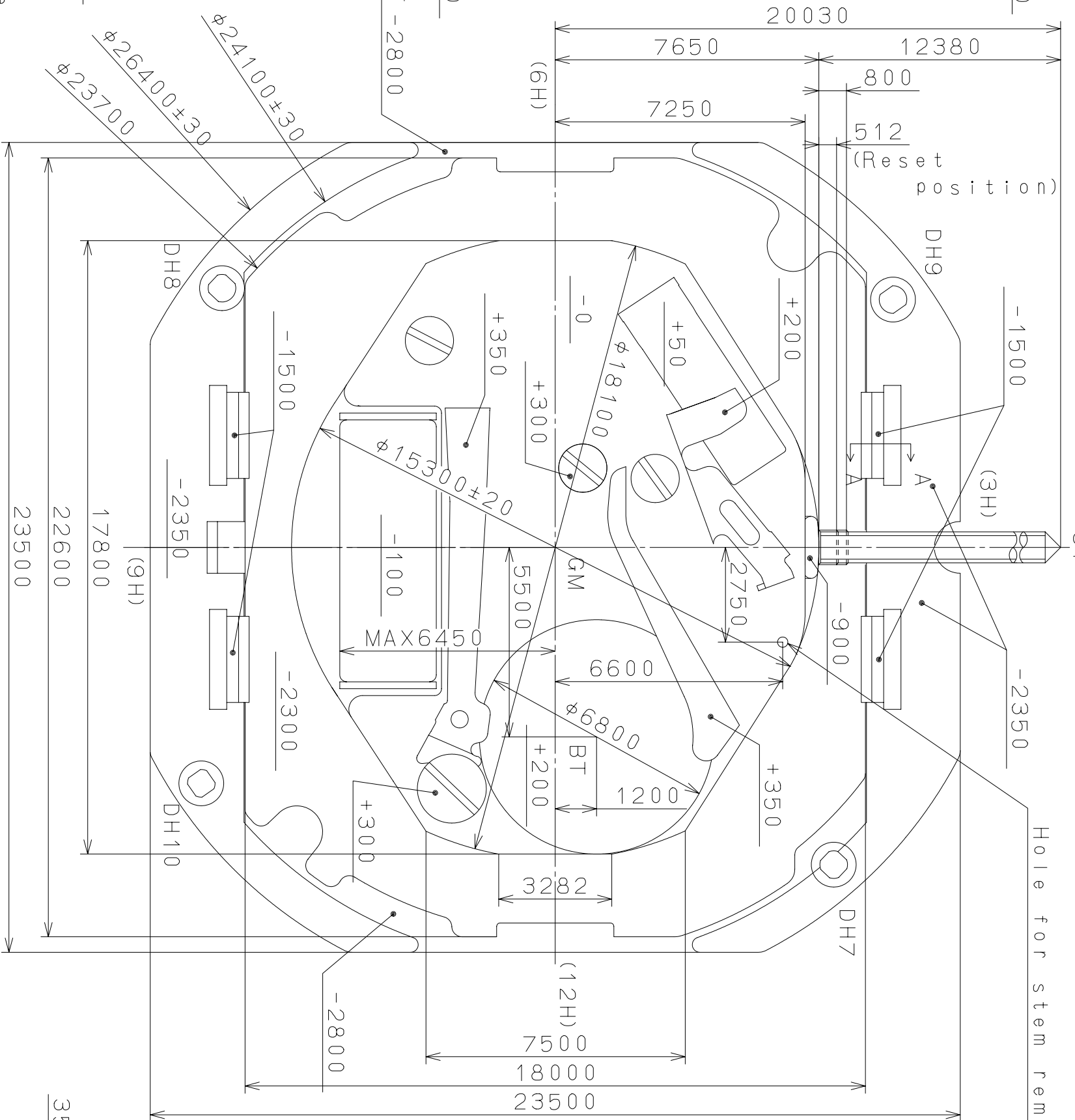


**These specifications might be changed without prior notice.**

Coordinates

記号	X	Y
GM	0	0
DH7	9207	8080
DH8	-7522	-9668
DH9	-7193	9800
DH10	6848	-10269

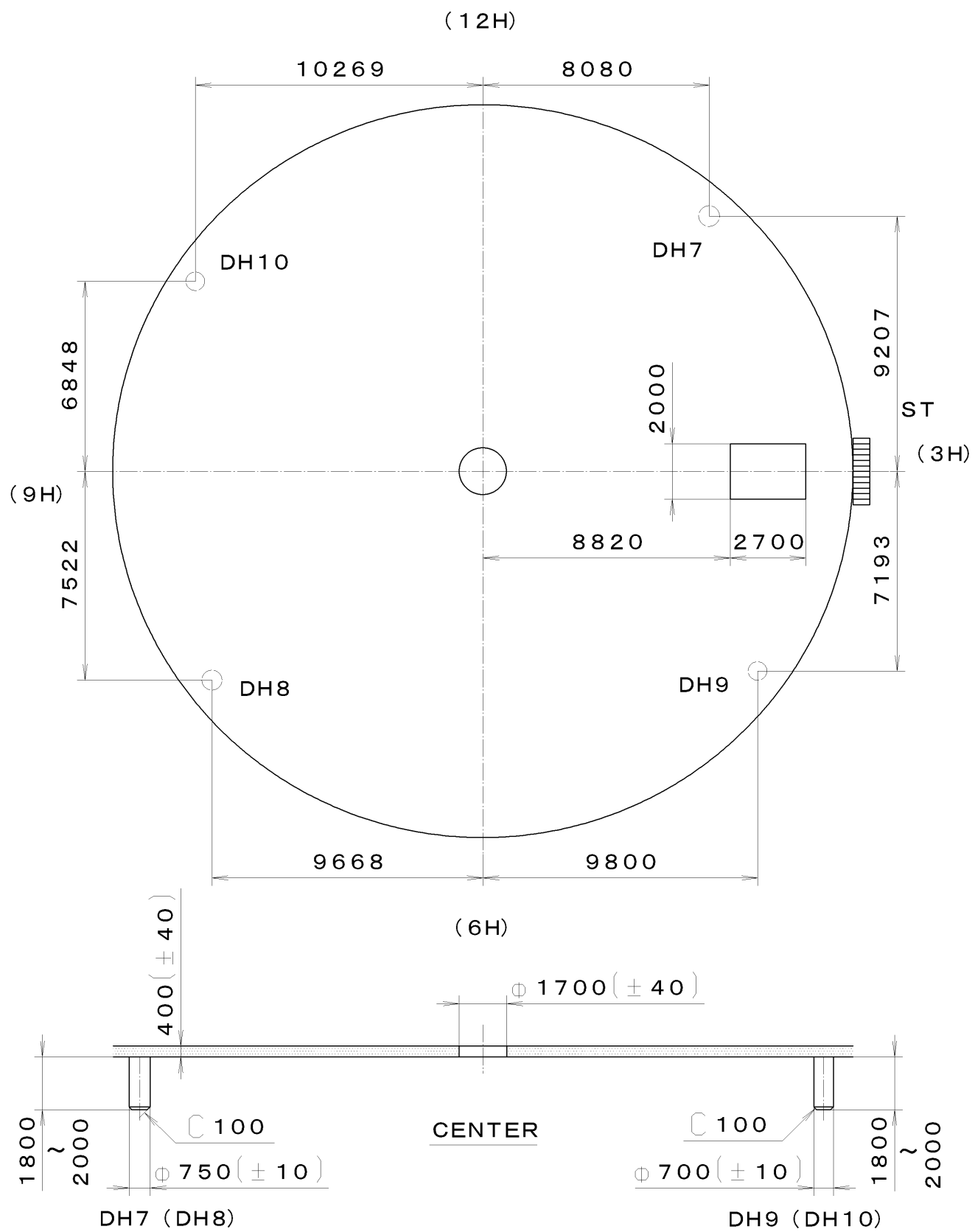
DH7~DH8=24390 (±20)  
DH9~DH10=24493 (±20)



△A	Quantity	Cal No.: 2315
△A	Unit	1 / 1000 mm
△A	Scale	7 / 1
△A	Drawn	Date
△A	Date	Name
△A	Description	M. Fukuda
△A	Appr. Checked	Name:
△A	Alterations	Frame for Case
△A	Material	Drawing No.: 2315C000
△A	Heat Treatment	
△A	Hardness	General Tolerances
△A	Plating	Dimensions
		Angles

This drawing is provisional and subject to our reconfirmation and/or revision without notice.

\*\*\* T I P W 2315-00A (01) \*\*\* (2100 1121) 04-02-04



7		Quantity		Cal. No. :	2315-00A
6		Unit	1/1000 mm	Parts:	
5		Scale	5:1	Name:	Indications for Dial
4		Date		Drawing No. :	2315D000
3		Drawn			
2		Checked	M. Fukuda		
1		Approved			
Material					
Heat Treatment		General Tolerances			
Hardness		Dimensions			
Plating		Angles			