

MOVEMENT SPECIFICATIONS
CAL. 6P23 ANALOG QUARTZ MOV'T
 BY CITIZEN WATCH CO., LTD. JAPAN
MULTI - EYES RANGE
 MANUFACTURED IN JAPAN

1. BASIC SPECIFICATION

(1) CAL. NO.

CALIBRE	6P23 (2 EYE's at 12 & 6 H)
Ligne	10-1/2
Size*mm	22.6 x 22.6 x ϕ 23.3
Total height	3.45mm
Hands	5
Date	at 12 o'clock position
Day of Week	X
24 hour	at 6 o'clock position
Month	X
Battery life	3Year
Battery	SR621SW or equivalent

(2) Time standard

Type of quartz : Tuning fork type quartz crystal
 Frequency : 32,768Hz
 Accuracy : +/-20 s/month worn under normal circumstances

(3) Battery installed

Type of battery : Silver oxide SR621SW or equivalent

(4) Others

Driving systems : Two-pole stepping motor

(5) Balanceable weight of hand

Minute hand Max. 0.4 μ N·m
 Second hand Max. 0.07 μ N·m

(6) Additional Mechanisms

Calendar : Date (Center, clockwise)
 : 24 Hours (not Dual Time)

Date correction : Pull out the crown to the first click

Power conservation switch : Pull out the crown to the second click

Second hand stopping devis : Pull out the crown to the second click

2. SEPARATED PARTS

* Setting stem	065-379
Length of movement center to stem end...	20.03mm
Thread.....	0.9 x 12.18mm

3. Others

*** Measurement of time rate**

The unit(gate) time of measurement must be set at "10s " or integer fold value of 10s owing to the DFC system, and the measurement must be performed in the form of complete watch.

*** Marking on movement**

**MIYOTA CO. UNADJUSTED
NO JEWEL JAPAN 6P23**

*** Typical clearance**

Mov't - Caseback	minimum 150 μm or more
Top of hands - Glass	300 - 400 μm *

* depending and subject to the glass and case structure, and hand length

4. Notice Of Casing

The interval between Dial and Glass end should be 150 μm to avoid breakage under drop.

5. Setting Instructions

(1) Setting the date (Quick change function)

Pull the crown out to the first click position and set the date by rotating the crown backyard.

If the date is set between 9:00 PM and 0:00 AM, the date will not change correctly.

(2) Setting the normal time

Pull the crown out to the second click position when the second hand reaches the 12 o'clock position so that the second hand stops there.

Then set the hour and minute hands.

When setting the minute hand, put it 4 to 5 minutes earlier than the time to be set, and then turn it back to the correct time.

Note: The day is changed during the period from about 0:00 AM to about 5:30 AM.

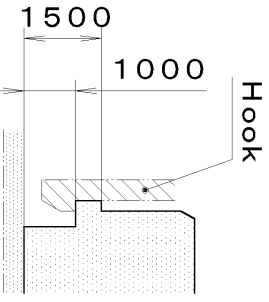
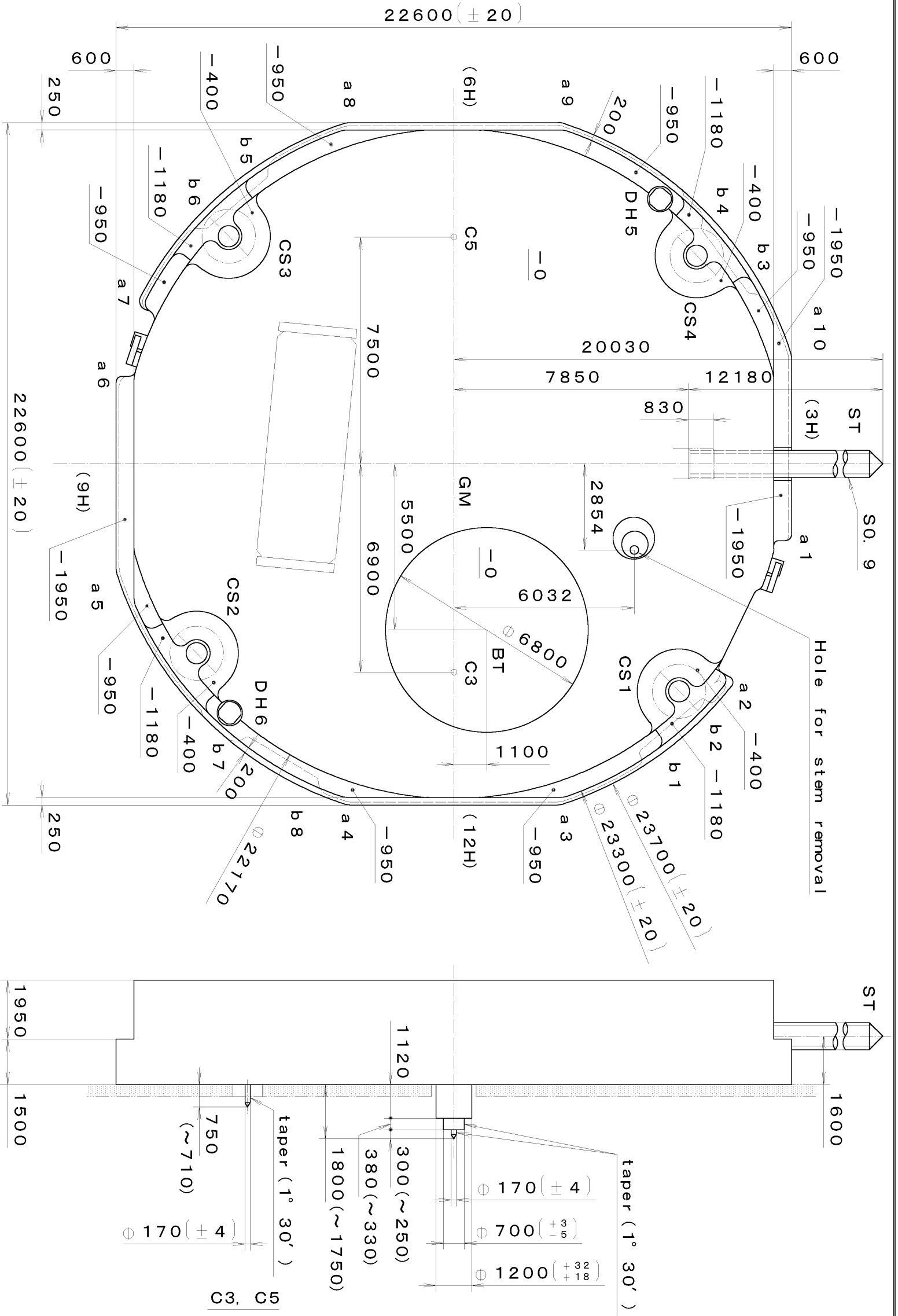
After the time is set, push the crown back simultaneously with the time signal.

The second hand will start running at the same time.

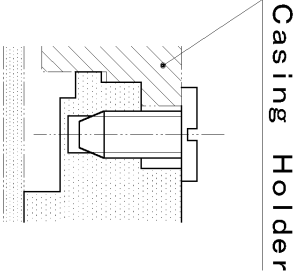
This specifications might be changed without prior notice.

DH5~DH6=22287 (±20)

Coordinates			
Mark	X	Y	R
GM	0	0	—
DH5	-8759	6900	—
DH6	8251	-7500	—
a 1	2351	11100	200
a 2	7235	9131	200
a 3	10800	3490	500
a 4	10800	-3490	500
a 5	3490	-10800	500
a 6	-2700	-11100	200
a 7	-5389	-10216	300
a 8	-10800	-3490	500
a 9	-10800	3490	500
a 10	-3490	10800	500
b 1	9581	6360	150
b 2	7928	8331	150
b 3	-5773	9946	150
b 4	-7839	8415	150
b 5	-9572	-6374	150
b 6	-7916	-8342	150
b 7	9196	-6906	150
b 8	10501	-4690	150



Section b1~b8



Section CS1~4

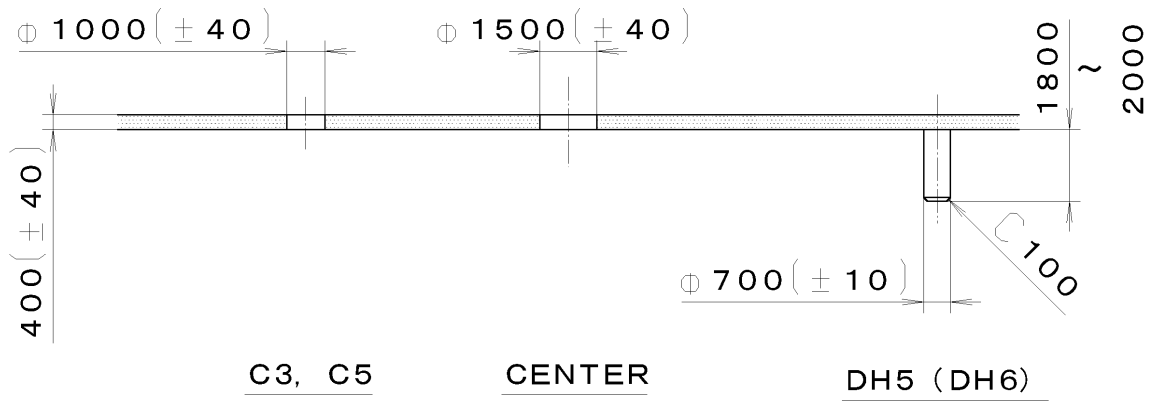
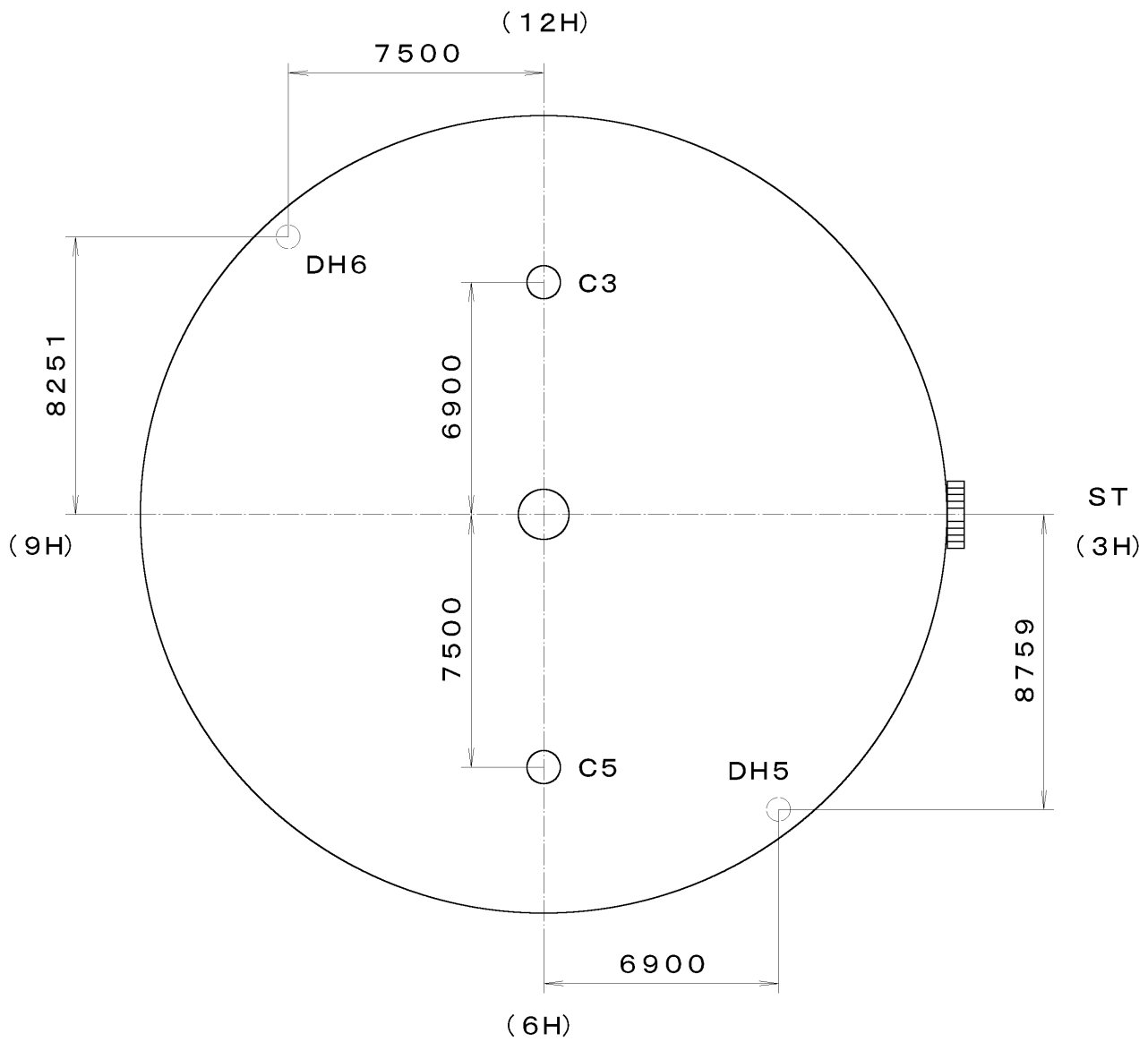
	H
With Battery strap	3600
Without Battery strap	3450

Quantity	Unit	Scale	Date	Drawn	Checked	Approved	Name
	1/1000 mm	7:1					T. Hiruta
Material							Frame for Case
Heat Treatment							Drawing No.: 6P23C000
Hardness							
Plating							
General Tolerances							
Dimensions							
Angles							

MIYOTA

This drawing is provisional and subject to our reconfirmation and/or revision without notice.

*** T I P W 6P23-00A (01) *** (2100 1121) 02-10-16



C3, C5 CENTER DH5 (DH6)

<table border="1"> <tr><td>7</td><td></td></tr> <tr><td>6</td><td></td></tr> <tr><td>5</td><td></td></tr> <tr><td>4</td><td></td></tr> <tr><td>3</td><td></td></tr> <tr><td>2</td><td></td></tr> <tr><td>1</td><td></td></tr> </table>		7		6		5		4		3		2		1		Quantity	Cal. No. : 6P23-00A
7																	
6																	
5																	
4																	
3																	
2																	
1																	
	Unit	1/1000 mm	Parts:														
	Scale	5:1															
	Date		Name: Indications for Dial														
	Drawn																
	Checked	T. Hiruta	Drawing No. : 6P23D000														
	Approved																
Material			MIYOTA														
Heat Treatment	General Tolerances																
Hardness	Dimensions																
Plating	Angles																