

Cal. 8217

AUTOMATIC & MANUAL WINDING MOVEMENT WITH DATE



Basic specification

Ligne	11-1/2"
Overall diameter	Φ26.0mm
Case fitting diameter	Φ25.6mm
Total height	5.67mm
Date	○
24 Hour Hand	○
Vibration frequency	21600 vibrations per hour
Jewels	21 Jewels

Function

Automatic & manual winding
 Display by means of hands: hour, minute, second, 24H.
 Date calendar
 Shock-absorber for balance staff

Technical characteristics

Hands fitting force

Second hand	Max. 30N
Minute hand	Max. 50N
Hour hand	Max. 50N

Lift angle 49°

Casing Non-corresponding to "Divers' watches" defined by ISO6425

Time performance

Accuracy	-20~+40 seconds/day
Posture difference	Under 50 seconds/ day
Running time	More than 40 hours

※Accuracy of the mechanical watch is different from the daily rate of the quartz watch and the accuracy will change maximum of several ten seconds during rewinding the spring, then the accuracy of the half winding condition will be different from that of full winding condition.

<Time performance measurement condition>

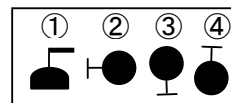
Accuracy

Measure within lapse of 10~60 minutes from full winding.

Posture difference

Measure accuracy in 4 different postures shown on the right picture within lapse of 10~60 minutes from full winding.

※Direction of 4 postures ①Date Dial side Up ②6 o'clock side up ③9 o'clock side up ④3 o'clock side up



Running time

Measure the running time from full winding.

※The mainspring becomes fully wound by rotating the ratchet wheel 7.5 times (turning the crown 40 times).

Automatic winding structure

Winding direction : Counter-clockwise (seeing from case back side)



Operating method

(1) Winding the mainspring

Automatic winding watch can also be hand wound by turning the crown in "A" position. Wind 15 ~ 20 times clockwise until second hand starts to move naturally.

(2) Setting the Time

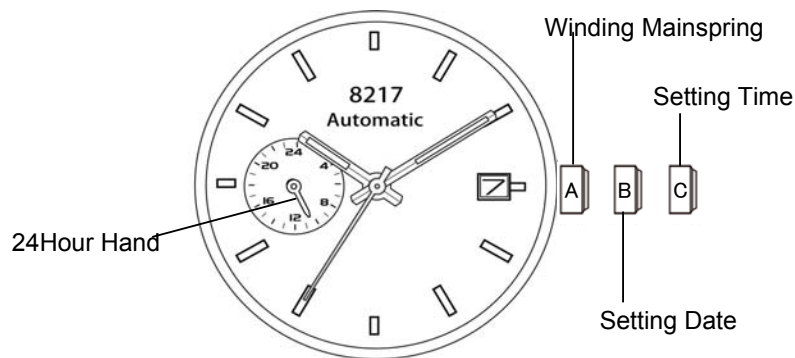
1. Pull the crown to "C" position.
2. Turn the crown to set the hour and minute hands.

(3) Setting the Date

1. Pull the crown to "B" position.
2. Turn the crown counter-clockwise to set the date.

*If the date is set between the hours of around 9:00 PM and 1:00 AM, the date may not change on the following day.

3. After the date has been set, push the crown back to the normal position.

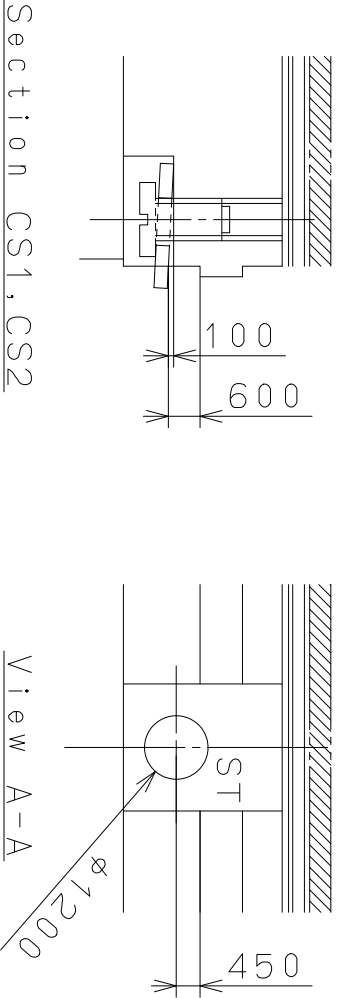
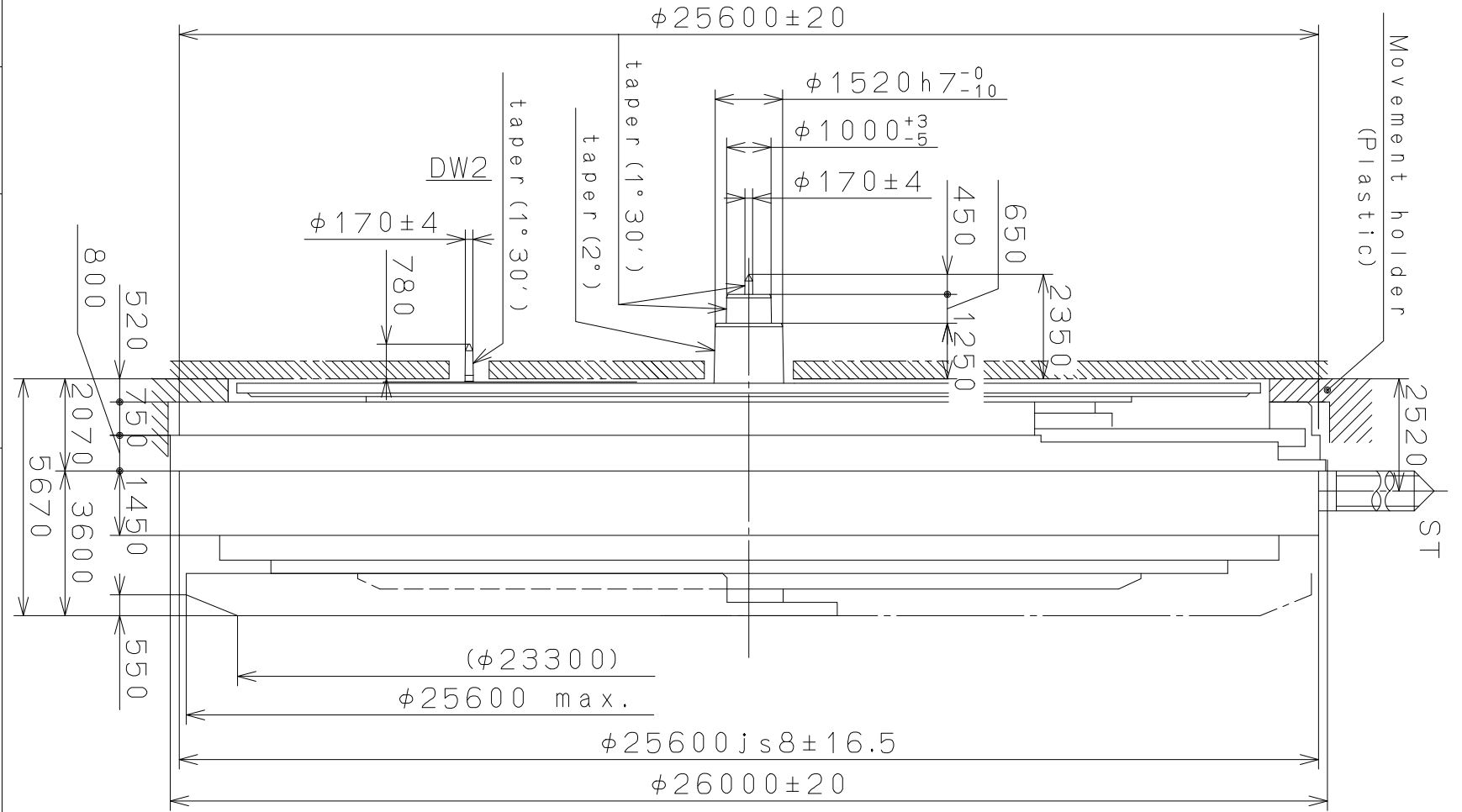
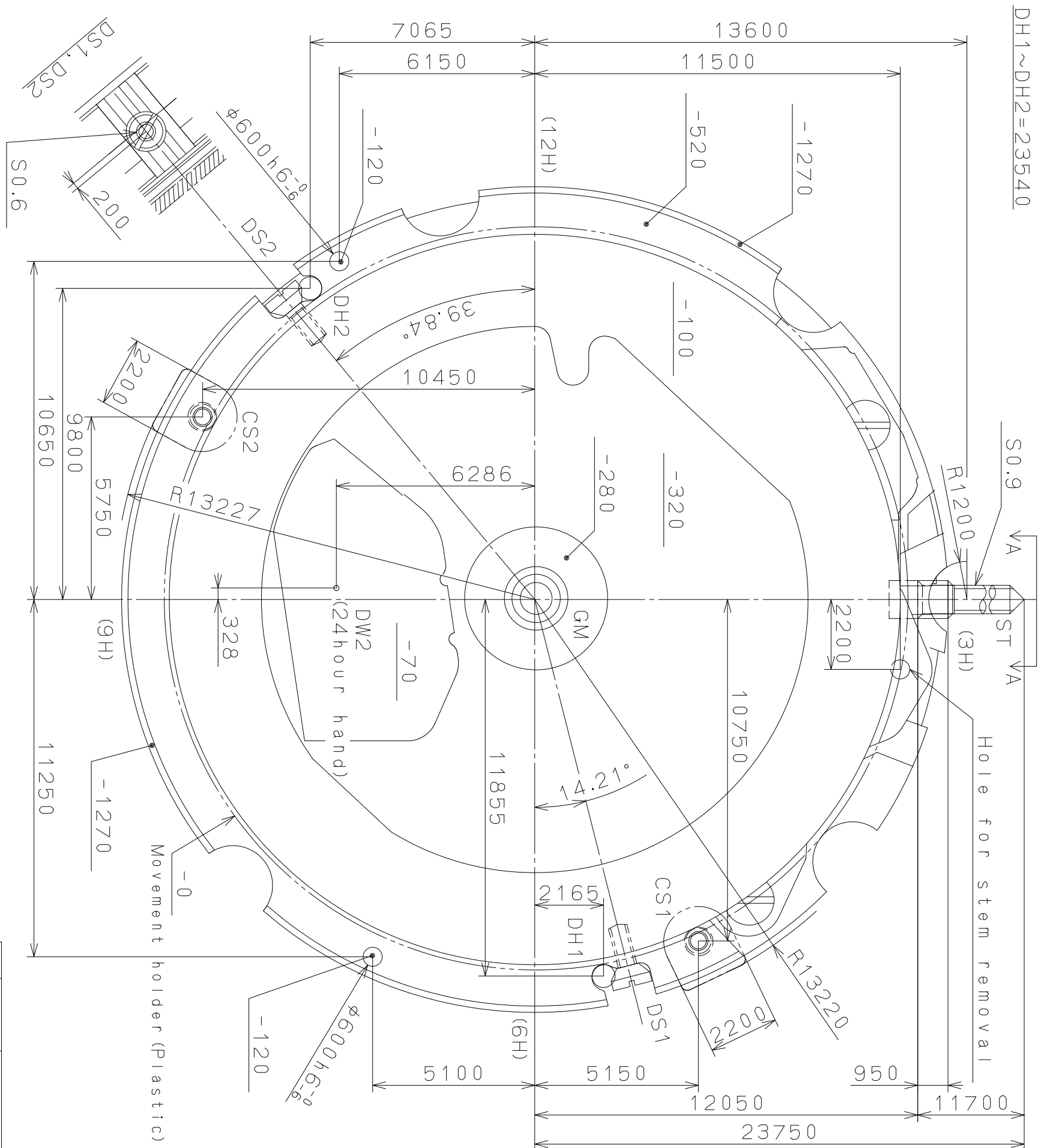


Separated parts

Winding stem	065-212 x 1
Screw for dial fixing	929-610 x 2
Movement holder	500-710 x 1

These specifications might be changed without prior notice.

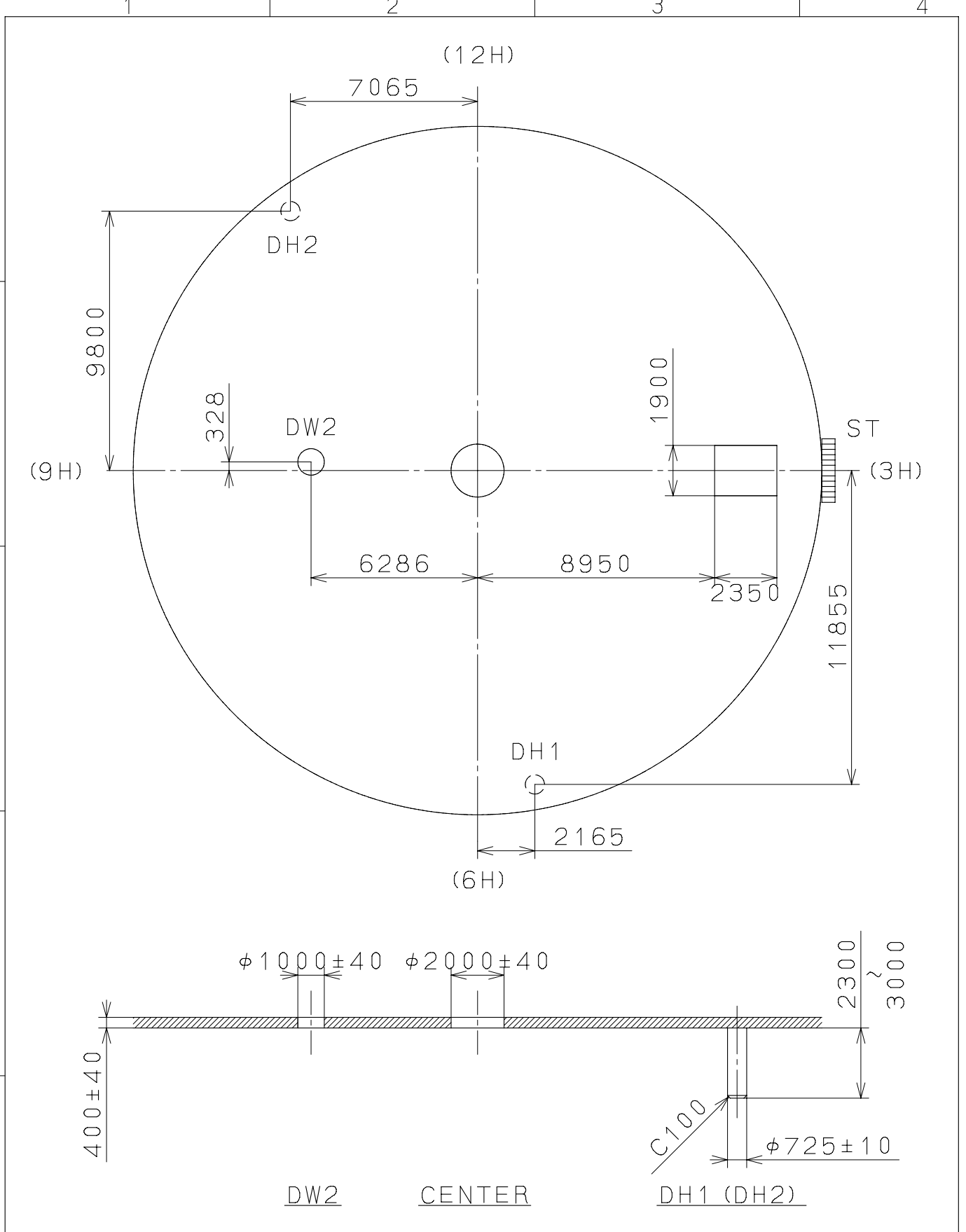
CITIZEN WATCH CO., LTD.



Material	Alterations	Date	Mark	Quantity	Unit	Cal. NO.:
Heat Treatment				1	1/1000 mm	82117
Hardness					Scale	7 : 1
Plating					Date	
					Drawn	
					Checked	
					Approved	
					Name:	N. Suzuki
					Parts No.:	
					Frame for Case	
					Drawing No.:	8217C012

2008/05/13 (14:05:02)

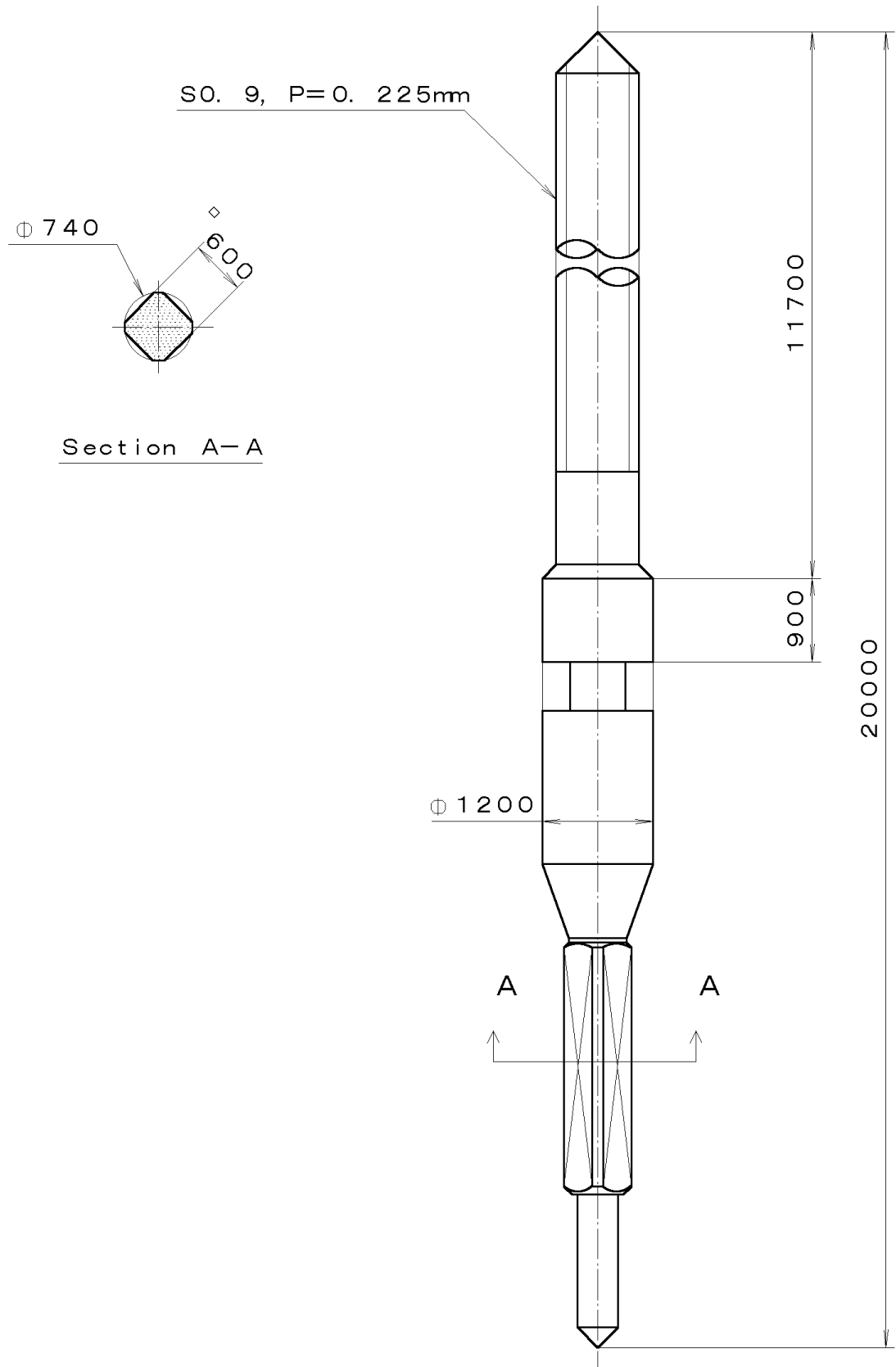
This drawing is provisional and subject to our reconfirmation and/or revision without notice.



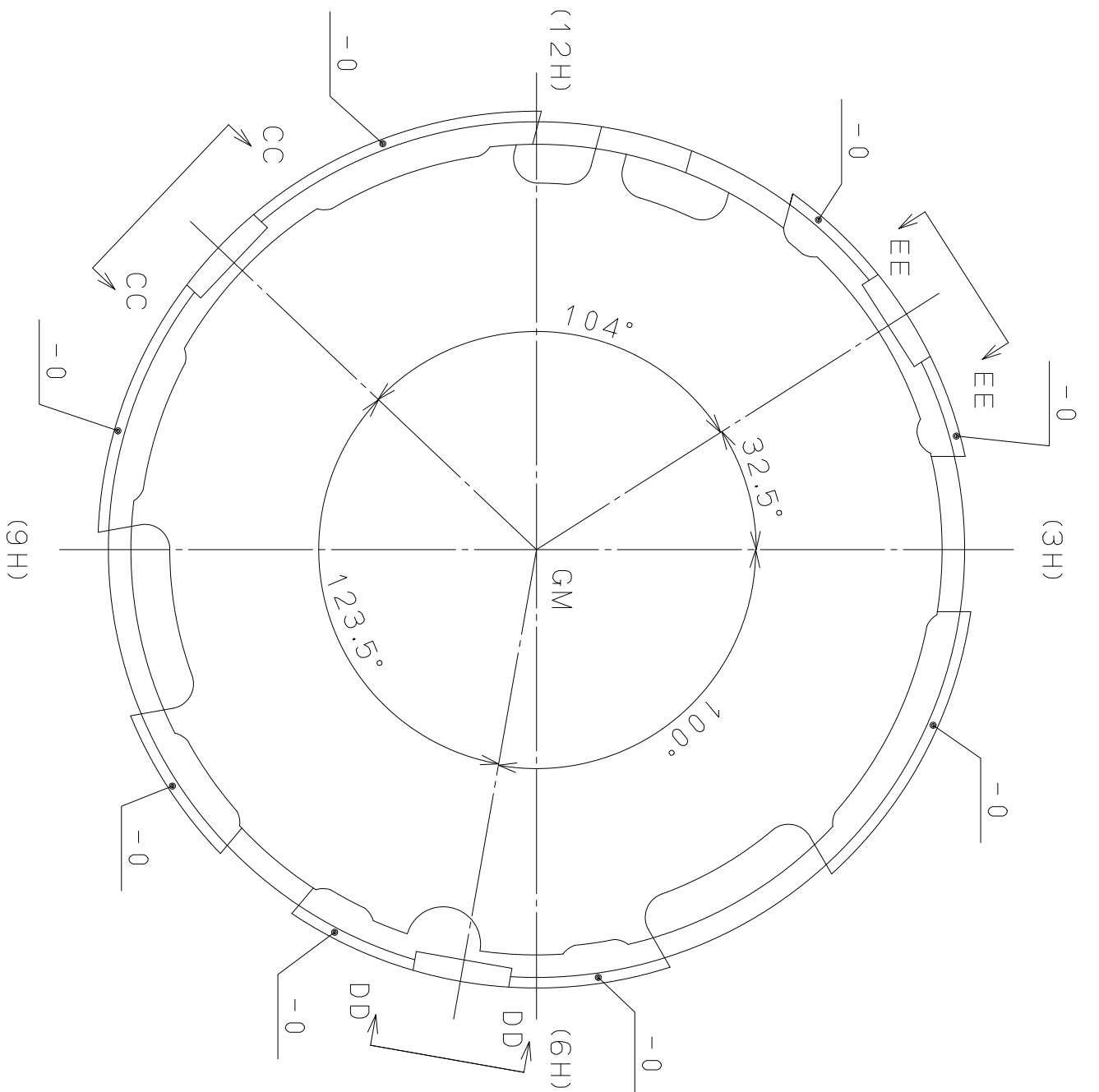
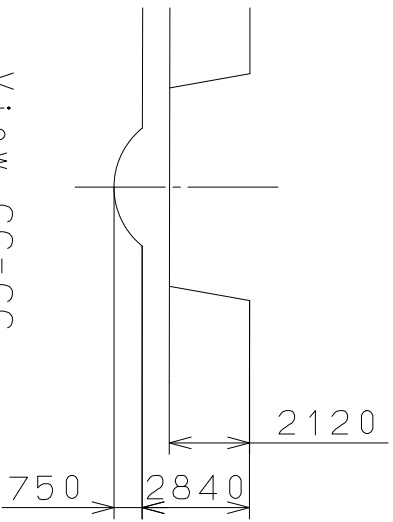
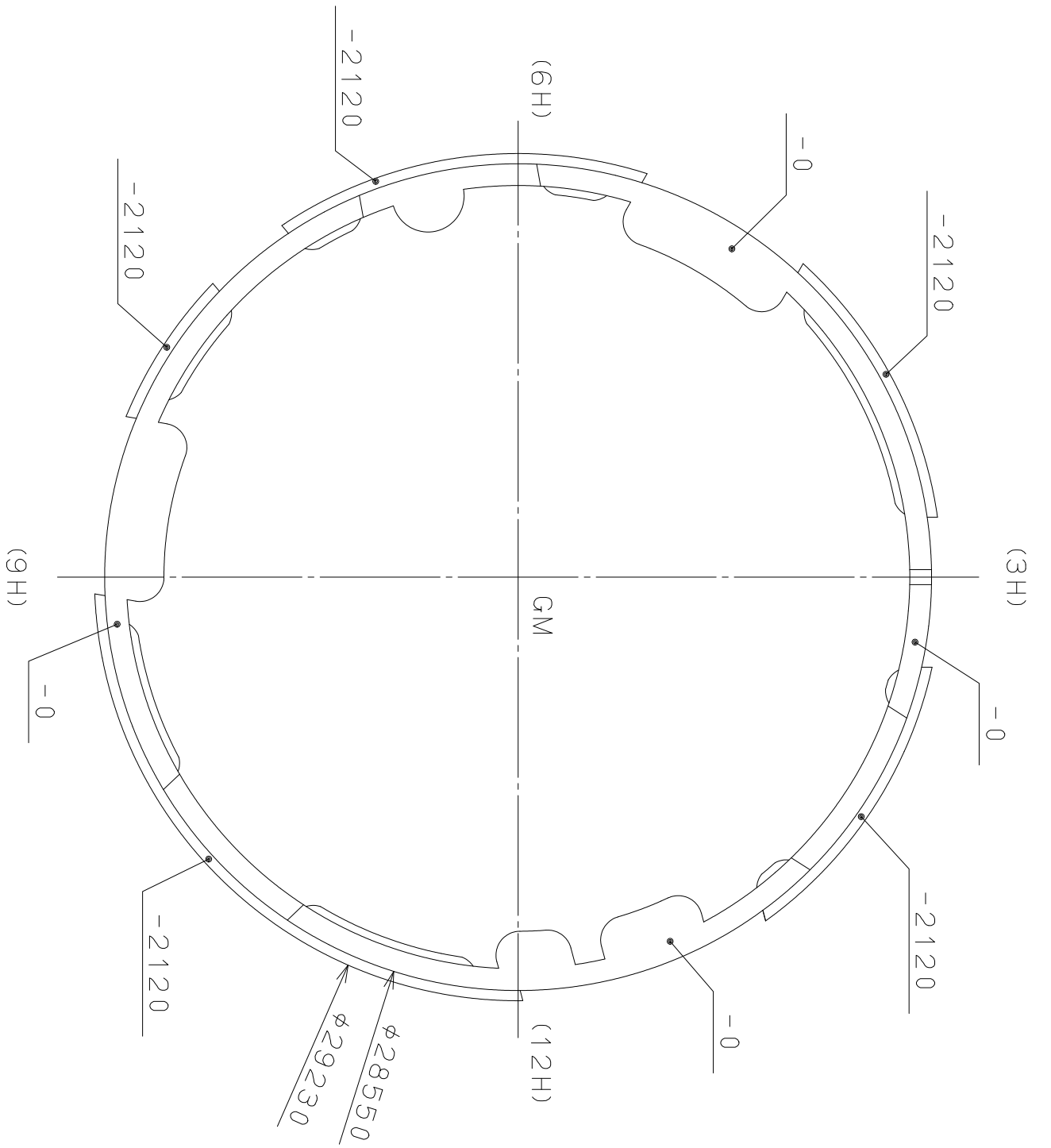
△			Quantity		Cal.NO.:
△			Unit	1/1000 _{mm}	8217-21A
△			Scale	5:1	Parts No.:
△			Date		
△			Drawn		
Mark	Date	Description	Appro.	Checked	Name:
		Alterations		Approved	Indications for Dial
Material					Drawing No.:8217D000
Heat Treatment					MIYOTA
Hardness					
Plating					
					CITIZEN WATCH CO.,LTD. TOKYO,JAPAN

This drawing is provisional and subject to our reconfirmation and/or revision without notice.

*** T I P W (01) *** (2100 1121) 00-09-18



7			Quantity		Cal. No. :
6			Unit	1/1000 mm	Parts:
5			Scale	15:1	
4			Date		Name:
3			Drawn		
2			Checked	T. Hiruta	Drawing No. : 2120S000
1			Approved		
Material					
Heat Treatment			General Tolerances		
Hardness			Dimensions		<div style="font-size: 2em; font-weight: bold; margin: 0;">CITIZEN</div> <div style="font-size: 0.8em; margin: 0;">WATCH CO., LTD.</div> <div style="font-size: 0.7em; margin: 0;">TOKYO, JAPAN</div>
Plating			Angles		



△	Quantity	1/1000 mm	Cal. NO.:
△	Unit	mm	
△	Scale	5 : 1	Parts No.:
△	Date		500-710
△	Drawn		
Mark	Date	Checked	Name:
Alterations	Description	Approved	Casings Holder
Material			Drawing No.: 8200E002
Heat Treatment			
Hardness			
Plating			
	General Tolerances		
	Dimensions		
	Angles		

MIYOTA

CITIZEN WATCH CO., LTD. TOKYO, JAPAN