

Cal. 8245 / 8247

AUTOMATIC & MANUAL WINDING MOVEMENT



Basic specification

Calibre	8245	8247
Ligne	11-1/2"	
Overall diameter	Φ26.0mm	
Case fitting diameter	Φ25.6mm	
Total height	5.67mm	
Small second	○	○
24 Hour Hand	N/A	○
Vibration frequency	21600 vibrations per hour	
Jewels	21 Jewels	

Function

Automatic & manual winding

Display by means of hands: hour, minute, small second, 24H(8247).

Shock-absorber for balance staff

Technical characteristics

Hands fitting force

Second hand	Max. 30N
Minute hand	Max. 50N
Hour hand	Max. 50N

Lift angle 49°

Casing Non-corresponding to "Divers' watches" defined by ISO6425

Time performance

Accuracy	-20~+40 seconds/day
Posture difference	Under 50 seconds/ day
Running time	More than 40 hours

※Accuracy of the mechanical watch is different from the daily rate of the quartz watch and the accuracy will change maximum of several ten seconds during rewinding the spring, then the accuracy of the half winding condition will be different from that of full winding condition.

<Time performance measurement condition>

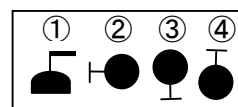
Accuracy

Measure within lapse of 10 ~ 60 minutes from full winding.

Posture difference

Measure accuracy in 4 different postures shown on the right picture within lapse of 10 ~ 60 minutes from full winding.

※Direction of 4 postures ①Date Dial side Up ②6 o'clock side up ③9 o'clock side up ④3 o'clock side up



Running time

Measure the running time from full winding.

※The mainspring becomes fully wound by rotating the ratchet wheel 7.5 times (turning the crown 40 times).

Automatic winding structure

Winding direction : Counter-clockwise (seeing from case back side)



Operating method

For 8245 / 8247

(1) Winding the Mainspring

Automatic winding watch can also be hand wound by turning the crown in "A" position.

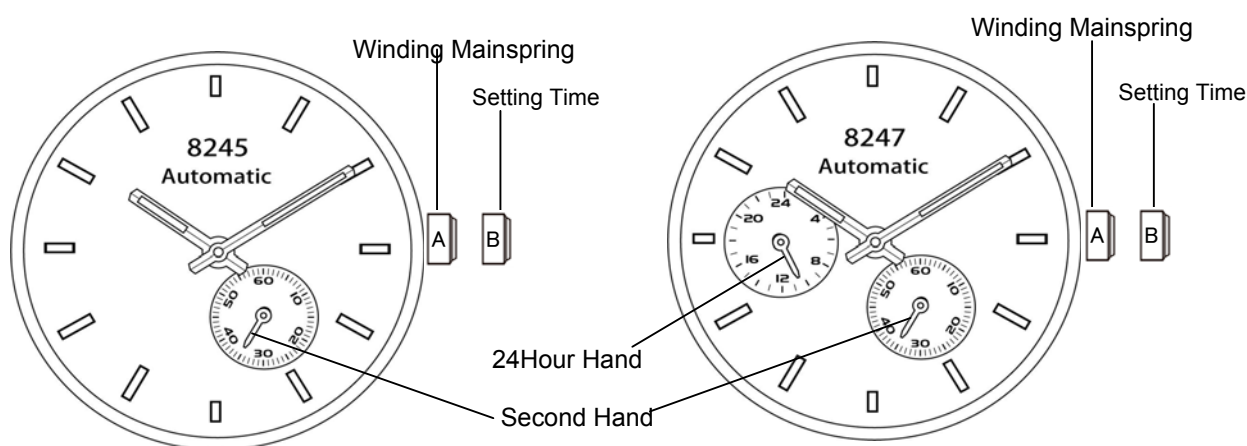
Wind 15 ~ 20 times clockwise. It will start to move naturally after shaking slightly.

(2) Setting the Time

1. Pull the crown to "B" position.
2. Turn the crown to set the hour and minute hand.

For 8247

When the time is set, 24hour hand at 9 o'clock moves linked with center hour hand.



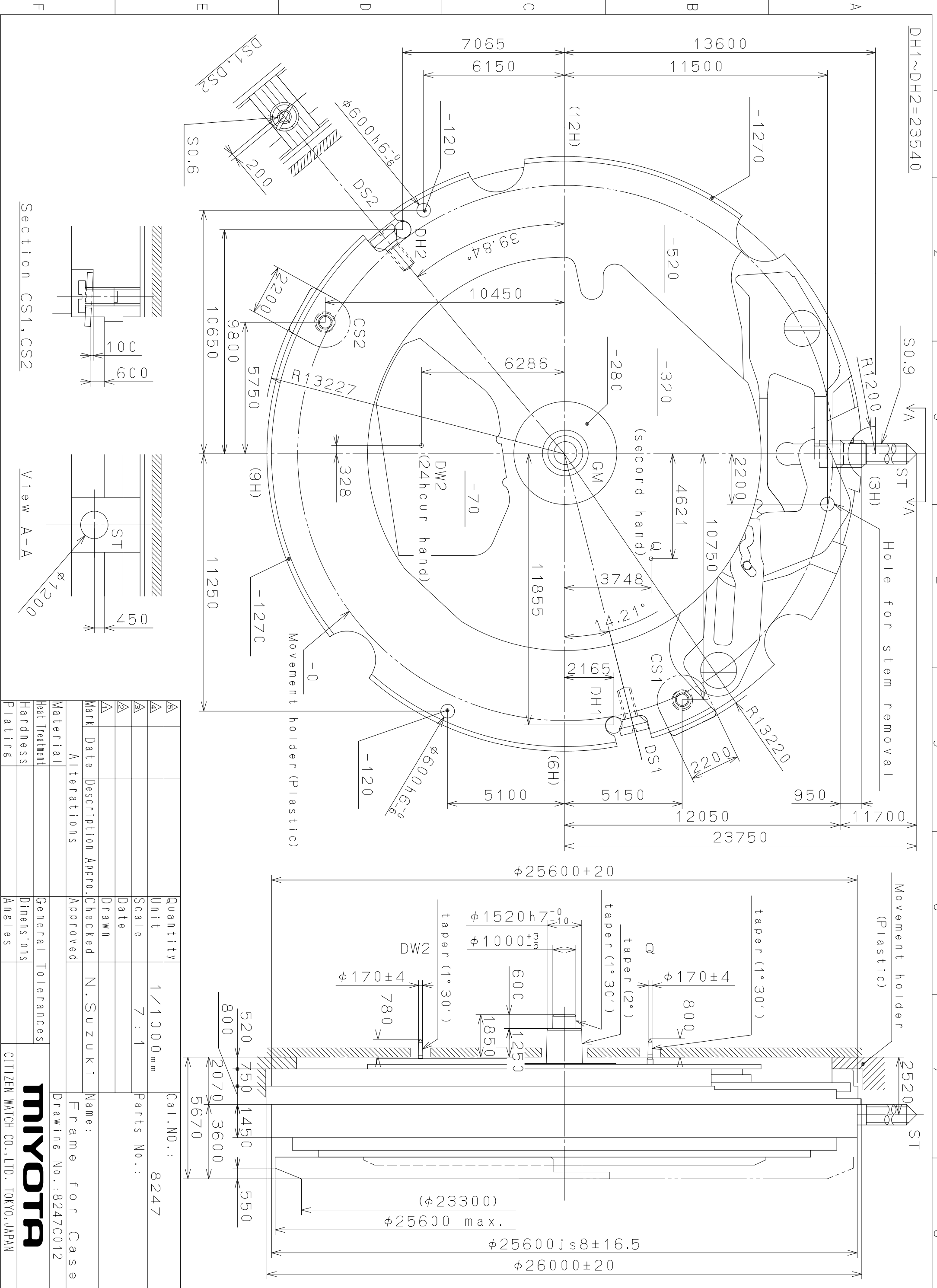
Separated parts

Winding stem	065-212 x 1
Screw for dial fixing	929-610 x 2
Movement holder	500-710 x 1

These specifications might be changed without prior notice.

CITIZEN WATCH CO., LTD.

This drawing is provisional and subject to our reconfirmation and/or revision without notice.



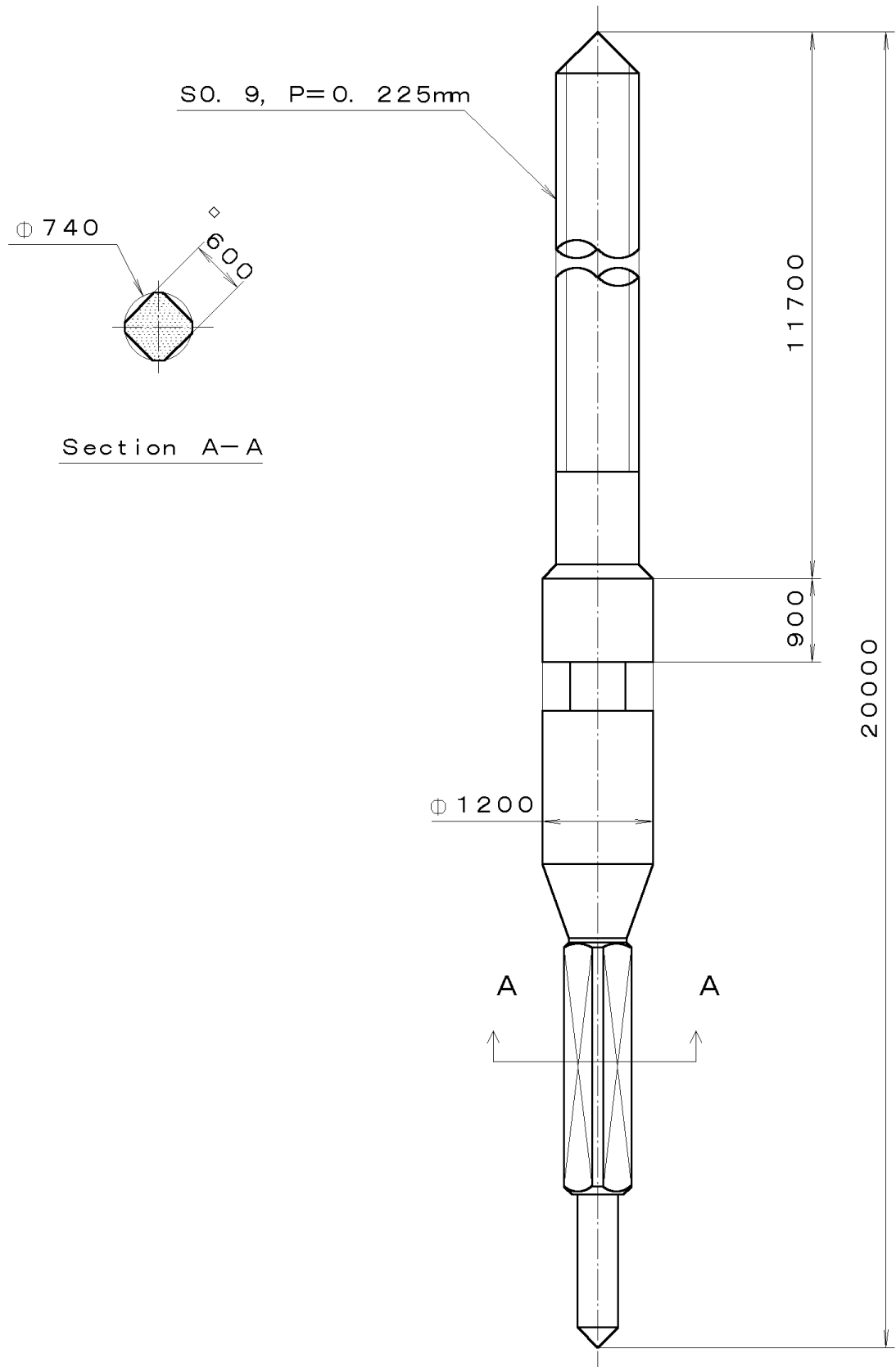
Section CS1, CS2

View A-A

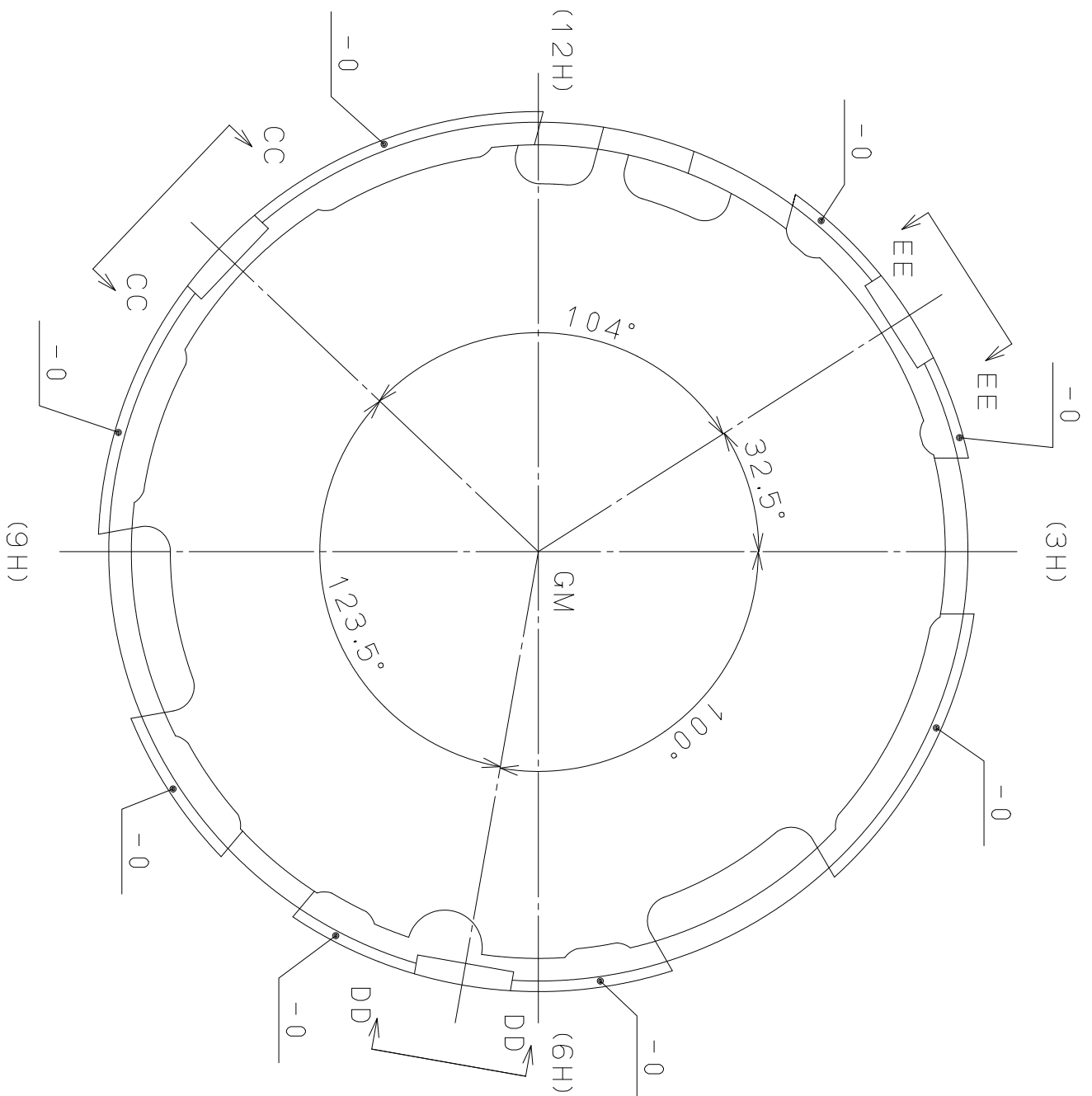
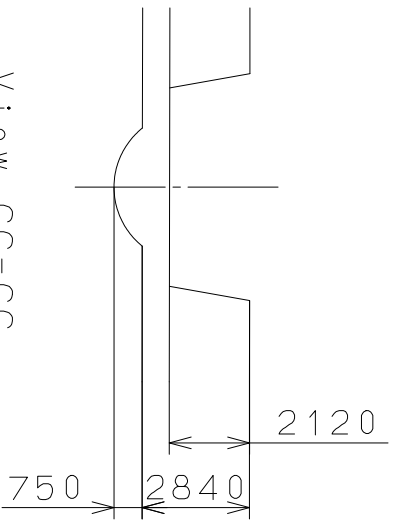
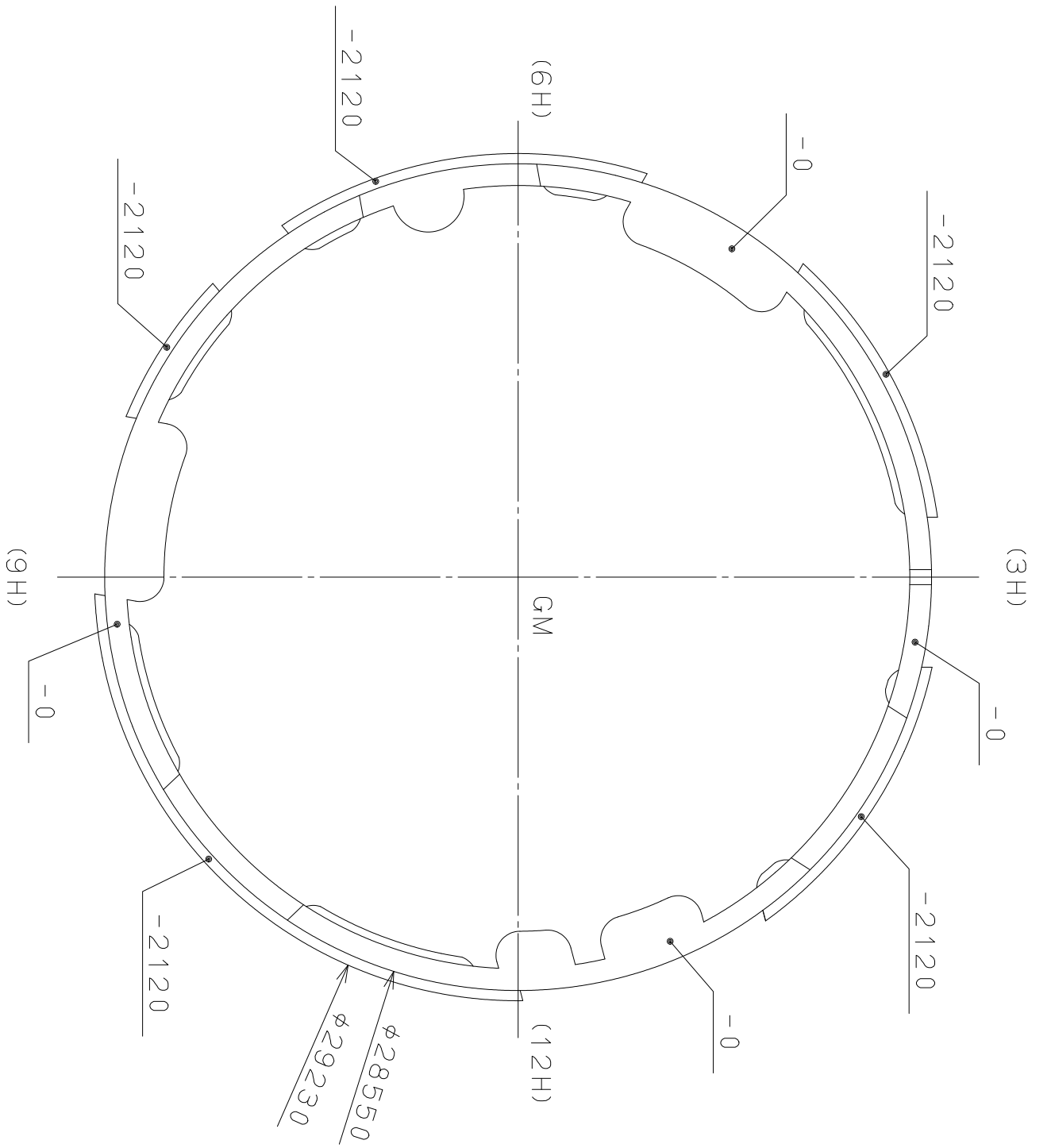
Material	Alterations	Date	Mark	Quantity	Unit	Cal. NO.:
Heat Treatment	Description	Checked	Approved	1 / 1000	mm	8247
Hardness	Drawn			Scale	7 : 1	Parts No.:
Plating	Angles					
				Name: N. Suzuki		
				Frame for Case		
				Drawing No.: 8247C012		
				Miyota		
				CITIZEN WATCH CO., LTD. TOKYO, JAPAN		

This drawing is provisional and subject to our reconfirmation and/or revision without notice.

*** T I P W (01) *** (2100 1121) 00-09-18



7			Quantity		Cal. No. :
6			Unit	1/1000 mm	Parts:
5			Scale	15:1	
4			Date		Name: SETTING STEM
3			Drawn		
2			Checked	T. Hiruta	
1			Approved		Drawing No. : 2120S000
Material			<div style="display: flex; align-items: center; justify-content: center;"> <div style="font-size: 2em; font-weight: bold; margin-right: 10px;">CITIZEN</div> <div style="text-align: right;"> WATCH CO., LTD. TOKYO, JAPAN </div> </div>		
Heat Treatment					
Hardness					
Plating					
			General Tolerances Dimensions Angles		



Quantity	1/1000 mm	Cal. NO.:
Unit	Scale	Parts No.:
Scale	Date	500-710
Date	Drawn	Name:
Drawn	Checked	Casings Holder
Checked	Approved	Drawing No.: 8200E002
Approved	N. Suzuki	
Material	Alterations	
Material		
Heat Treatment		
Hardness		
Plating		
General Tolerances		
Dimensions		
Angles		

MIYOTA

CITIZEN WATCH CO., LTD. TOKYO, JAPAN