

MIYOTA

STOPWATCH!

MOVEMENT SPECIFICATIONS

CAL. : JS50

12-1/2 LIGNE, 3 EYES WITH STOPWATCH FUNCTION

ANALOGUE QUARTZ, NO JEWEL

BY CITIZEN WATCH CO., LTD. JAPAN

MANUFACTURED IN JAPAN

1. BASIC SPECIFICATIONS

(1) Cal. No.

*TO CONFIRM WITH MOV'T DRAWING ATTACHED

CALIBRE	JS50
Ligne	12-1/2
Overall diameter	Φ28.2×26.0(3H-9H)
Case fitting diameter	Φ27.6 × 26.0(3H-9H)
Date	X
Total height	4.18mm
Battery life	Approx. 2 years*
Battery	SILVER OXIDE SR621SW or equivalent

(* 30 minutes chronograph operation per day)

(2) Time standard

Type of quartz : Tuning fork type quartz crystal

Frequency : 32,768Hz

Accuracy : **+/-20 s/month** worn under normal circumstances

(3) Balanceable weight of hand

Minute hand : Max. 0.4 μN.m

Second hand : Max. 0.09 μN.m

Other small hands : Max. 0.02 μN.m

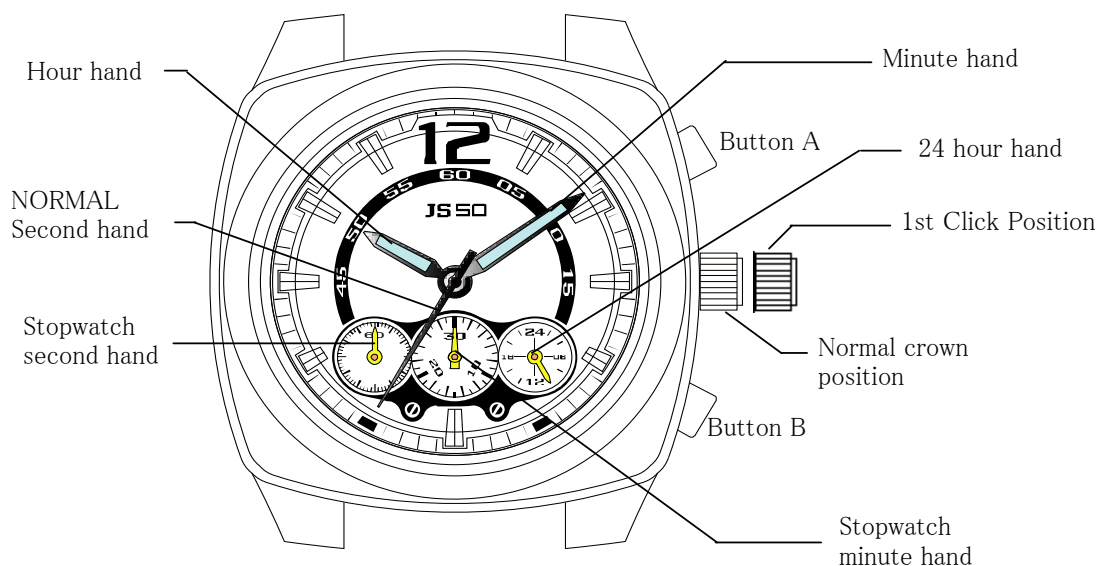
(4) Function

Stopwatch 1 sec. basis (Up to 29 min. 59 sec.)

Powercell Saving Reset Mechanism (PSRM)

Over-loading Compensation Device (OLCD)

Digital Frequency Control (DFC) for time adjustment



Button A : START / STOP

Button B : RESET

1st Click Position : TIME ADJUSTMENT / REFERENCE POSITION ADJUSTMENT

2.SEPARATED PARTS

Setting stem x1

Code
 Length from movement center to far end
 of setting stem
 Thread.....

065-505
 20.03mm
 Φ0.9mm x 11.68mm

3.OTHERS

*** Measurement of time rate**

The unit (gate) time of measurement must be set at "10 sec." or integer fold value of 10 sec. owing to the DFC system, and the measurement must be performed in the form of complete watch.

*** Marking on movement**

**JAPAN
 MIYOTA CO.
 JS50
 NO JEWELS**

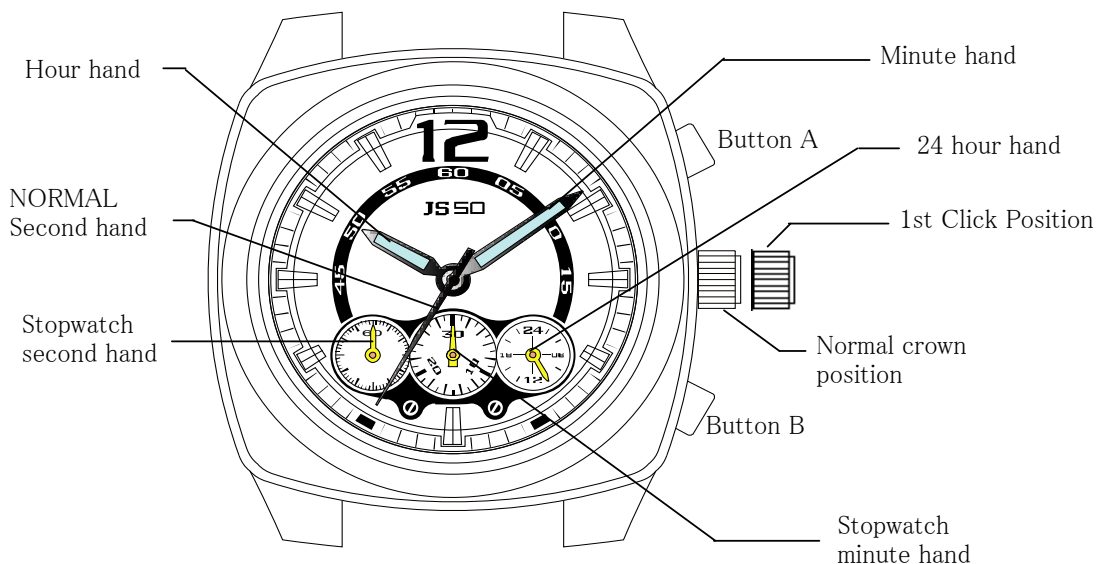
*** Typical clearance**

Mov't - Caseback
 Top of hands - Glass
 * subject to the glass, case structure, and the length of hand

minimum 150 microns
 300 - 400 microns *

4. INSTRUCTIONS MANUAL

A) DISPLAYS AND BUTTONS



B) SETTING THE TIME

1. Pull the crown out to the 1st position.
2. Turn the crown to set hour and minute hands.
3. When the crown is pushed back to the normal position in synchronization with a time signal, second hand begins to run.

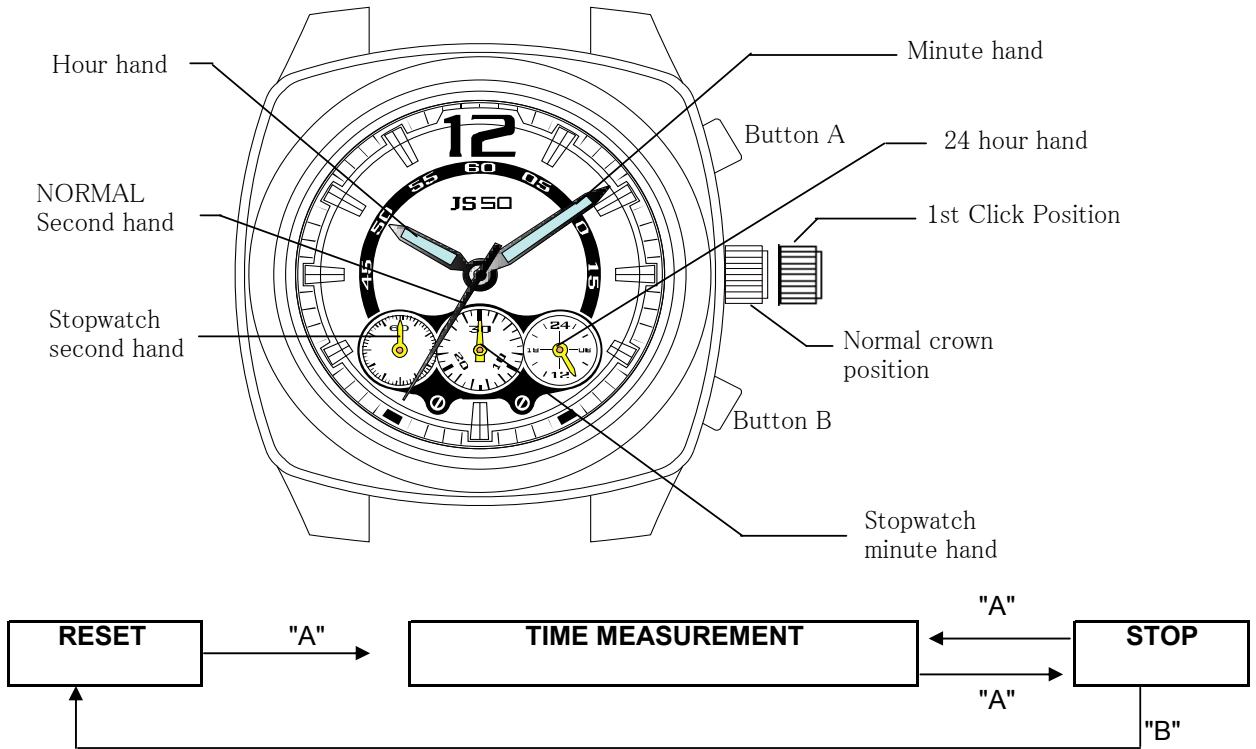
C) USING THE STOPWATCH

This stopwatch is able to measure and display time in 1 second united up to maximum of 30 minutes. Stopwatch will stop automatically after running continuously for 30 minutes.

Measuring time with the stopwatch

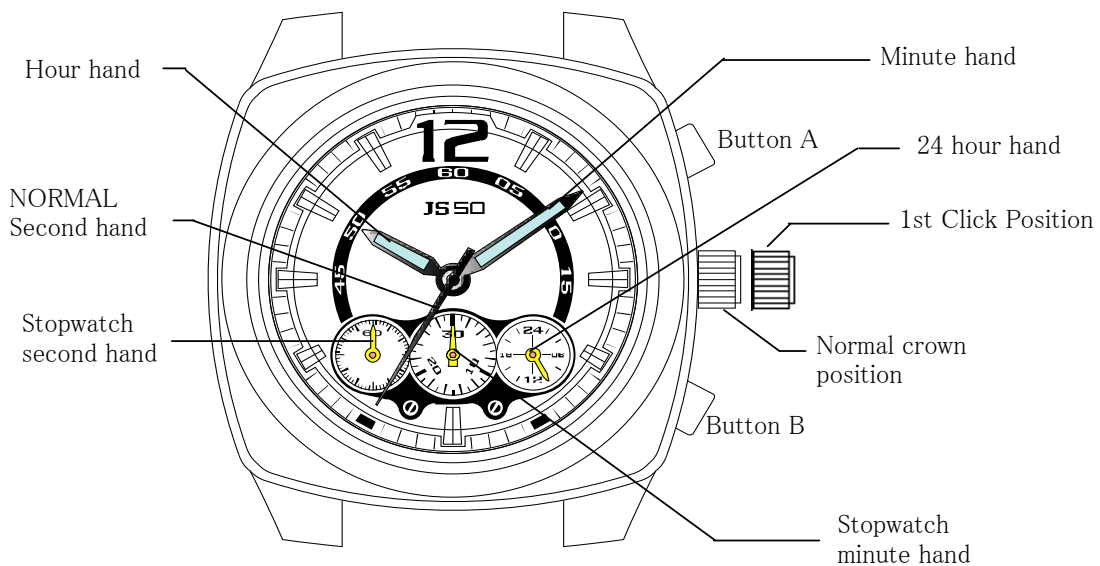
1. Press button "A" to start the stopwatch.
2. The stopwatch can be started and stopped each time button "A" is pressed.
3. Pressing button "B" resets the stopwatch and stopwatch minute and second hands return to their ZERO positions.

*** Button A / B does not function during resetting the stopwatch.**



D) STOPWATCH RESET (INCL. AFTER REPLACING BATTERY)

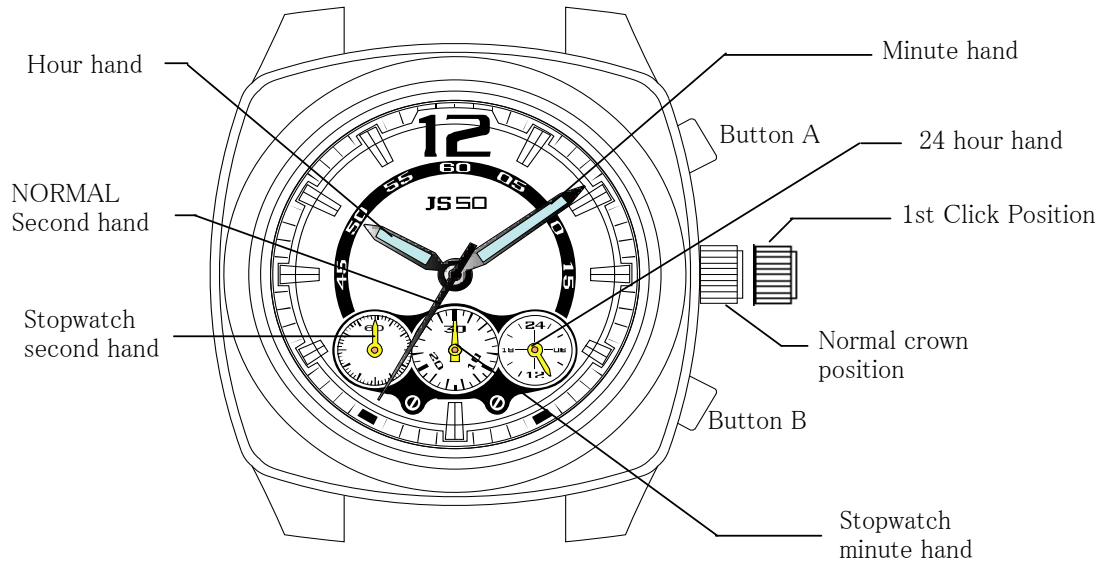
This procedure should be performed when the stopwatch second hand does not return to the ZERO second position after the stopwatch has been reset, and including after the battery has been replaced.



1. Pull the crown out to the 1st click position.
2. Press button "A" to set the stop watch second hand to the ZERO position.
 - *The stopwatch minute hand is synchronized with stopwatch second hand.
 - *The stop watch second hand can be advanced rapidly by continuously pressing button "A".
3. Once the hands have been zeroed, reset the time and return the crown to its normal position.

E) FITTING METHOD OF HANDS

Place the module on case back shown in the figure and position the reference hand, then fit the hands according to the following procedures.



1. Pull out the crown to the time setting position. (1st Click Position)

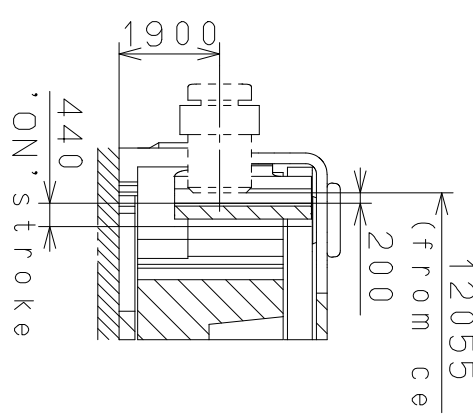
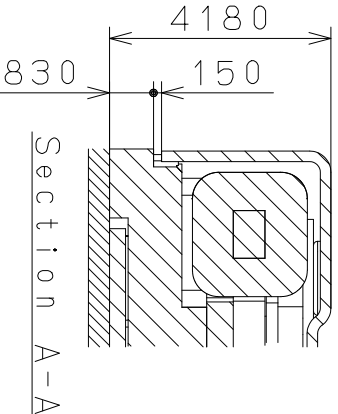
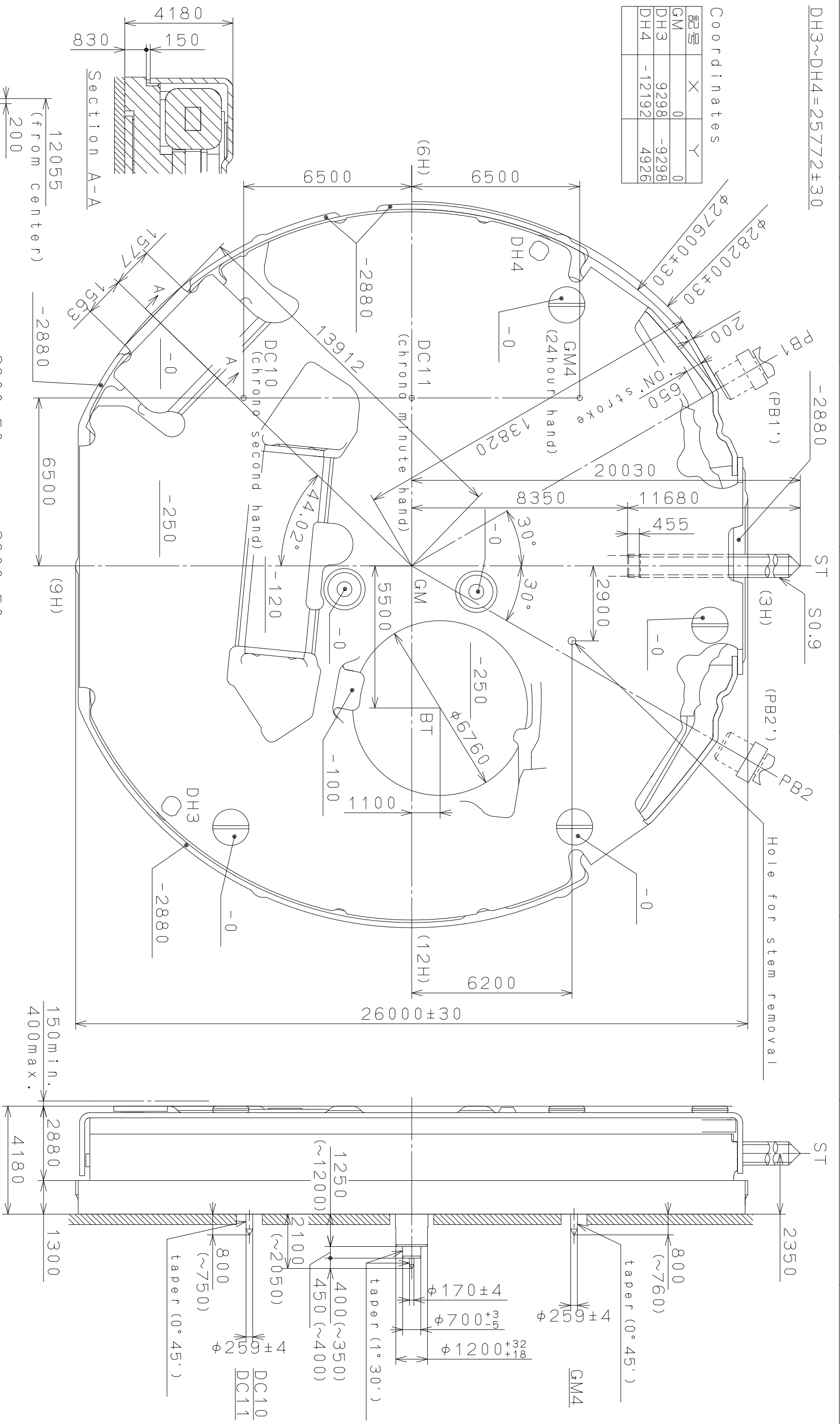
2. Fit all the hands to the 12-o'clock position.

When fitting the hands, remove the case back and place the movement on work stand (mount).

These specifications might be changed without prior notice.

This drawing is provisional and subject to our reconfirmation and/or revision without notice.

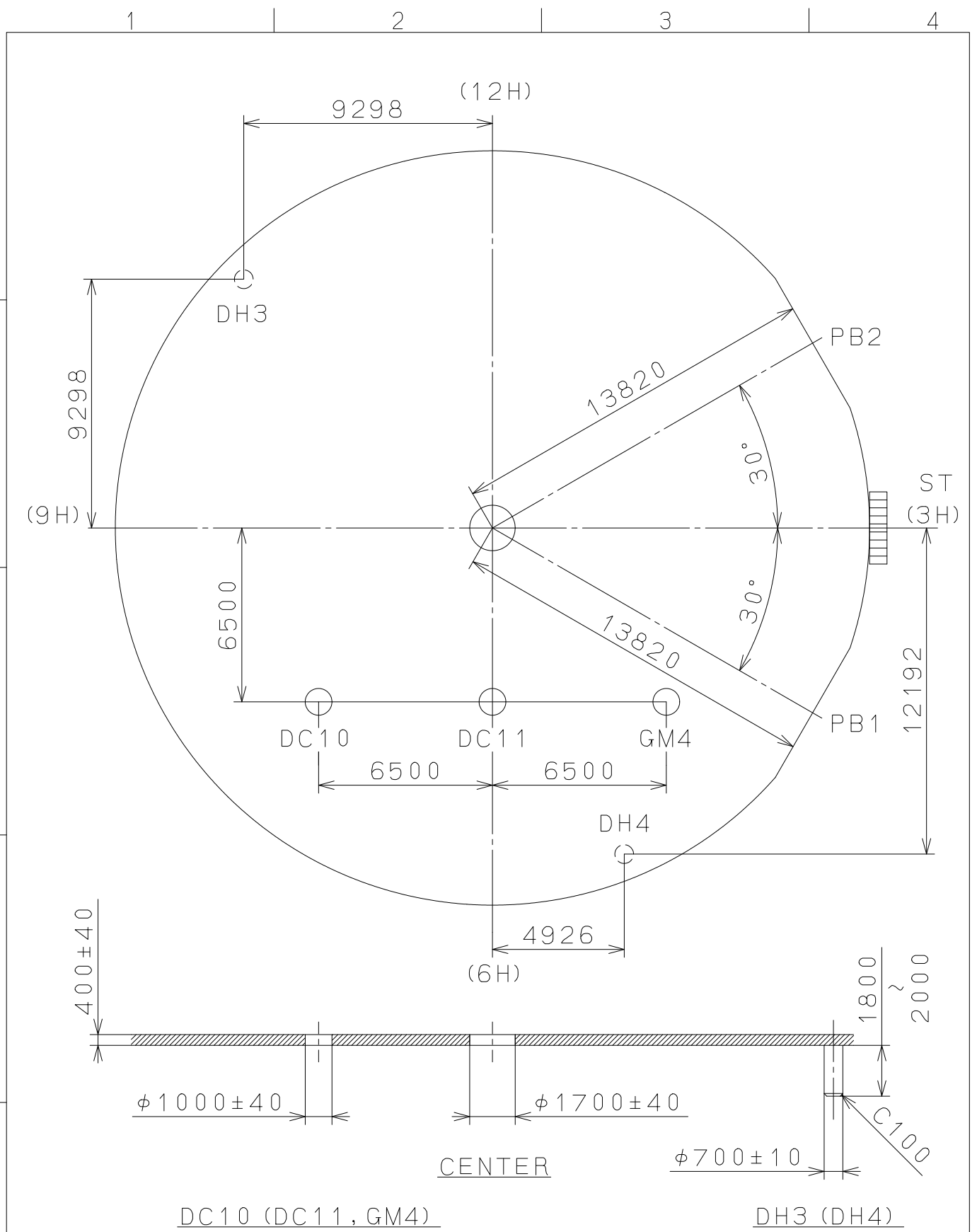
Coordinates		
記号	X	Y
GM	0	0
DH3	9298	-9298
DH4	-12192	4926



Mark	Date	Description	Appro.	Checked	Drawn	Name:
△						N. Suzuki
△						
△						
△						
△						
Alterations						
Material						
Heat Treatment						
Hardness						
Plating						
Quantity						
Unit						
Scale						
Date						
Drawn						
Checked						
Approved						
N. Suzuki						
Frame for Case						
Drawing No.: JS50C001						
Cal. NO.: JS50						
Parts No.:						

MIYOTA
CITIZEN WATCH CO., LTD. TOKYO, JAPAN

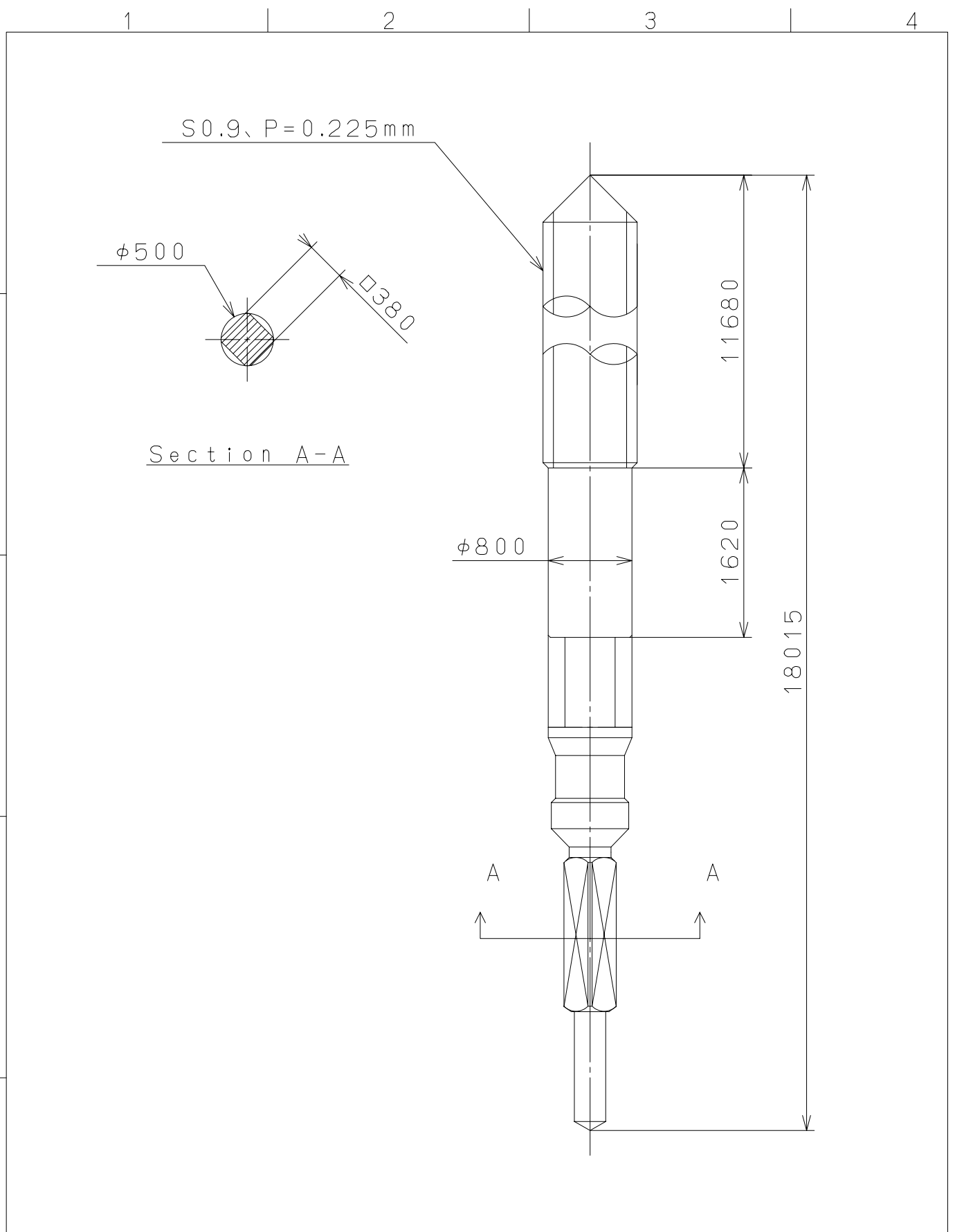
This drawing is provisional and subject to our reconfirmation and/or revision without notice.



△			Quantity		Cal.NO.:
△			Unit	1/1000 _{mm}	JS50-00C
△			Scale	5:1	Parts No.:
△			Date		
△			Drawn		
Mark	Date	Description	Appr.	Checked	Name:
		Alterations	Approved	N. Suzuki	Indications for Dial
Material					Drawing No.: JS50D001
Heat Treatment			General Tolerances	MIYOTA CITIZEN WATCH CO., LTD. TOKYO, JAPAN	
Hardness			Dimensions		
Plating			Angles		

2006/12/25 (07:50:10)

This drawing is provisional and subject to our reconfirmation and/or revision without notice.



△5			Quantity		Cal.NO.:
△4			Unit	1 / 1000 mm	
△3			Scale	20 / 1	Parts No.:
△2			Date		065-505
△1			Drawn		
Mark	Date	Description	Appr.	Checked	Name:
		Alterations		Approved	T.Hiruta
Material					SETTING STEM
Heat Treatment					Drawing No.: 5050S000
Hardness				General Tolerances	MIYOTA
Plating				Dimensions	
				Angles	CITIZEN WATCH CO., LTD. TOKYO, JAPAN