

MOVEMENT SPECIFICATIONS
CAL. 2S60 BY CITIZEN WATCH CO., LTD. JAPAN
ANALOG QUARTZ 10 YEARS BATTERY MOVEMENT
MADE IN JAPAN

1. BASIC SPECIFICATION

(1) CAL. NO.

CALIBRE	2S60
Ligne	10-1/2
Size	21.5mm x 20.0mm x Φ 23.7mm
Total thickness	3.99mm*
Hands	3
Date	○
BATTERY LIFE	10 YEARS
BATTERY	CR2012

*THICKNESS including LITHIUM battery

(2) Time standard

Type of oscillator: Turning fork type quartz crystal

Oscillation : 32,768Hz

Accuracy : ± 20 s/month worn under normal circumstances.

(3) Battery installed

Type of battery : See above: JAPAN-MADE

(4) Others

Driving systems : Two-pole stepping motor

Number of Jewel : No(0) jewel

(5) Additional Mechanisms & Features:

Quick Date Change by turning crown

Powercell Saving Reset Mechanism(PSRM)

Second hand stopping at optional position

Over-loading Compensation Device(OLCD)

Digital Frequency Control(DFC) for time adjustment

(6) Balanceable weight of hand

Minute hand Max. $0.4 \mu\text{N}\cdot\text{m}$

Second hand Max. $0.07 \mu\text{N}\cdot\text{m}$

2. SEPARATED PARTS

Setting stem	065-501
Length of movement center to stem end...	20.00mm
Thread.....	0.9 x 9.30mm

3. Others

* Measurement of time rate

The unit(gate) time of measurement must be set at "10s" or integer fold value of 10s owing to the DFC system, and the measurement must be performed in the form of complete watch.

* Marking on movement

**NO(0) JEWEL
(CAL. NO.)
MIYOTA CO., JAPAN**

* Typical clearance

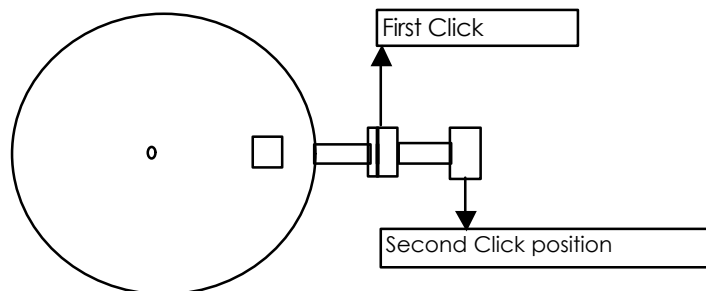
Mov't - Caseback	minimum 150 μ m or more
Top of hands - Glass	300 - 400 μ m *
* depending and subject to the glass and case structure, and hand length	

* Interchangeability of appearance components:

Dial Foot position & the diameter	same as Cal. 21/6M/1M series*
Date window position	same as Cal. 21/6M/1M series*
Hands	same as Cal. 2035/20/21/6L/6M/1L/1M series

*How to set time and date:

Date	-----	Pull out crown to the first click position, turn crown counter-clockwise for Date
Time	-----	Pull out crown to the second click position and turn crown until the time is set correctly**



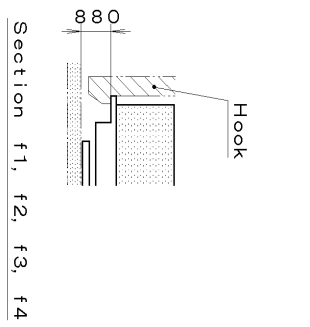
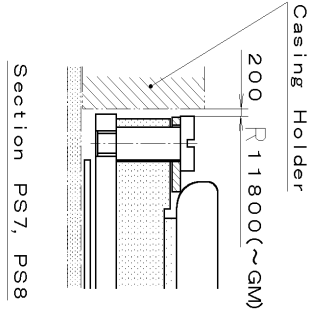
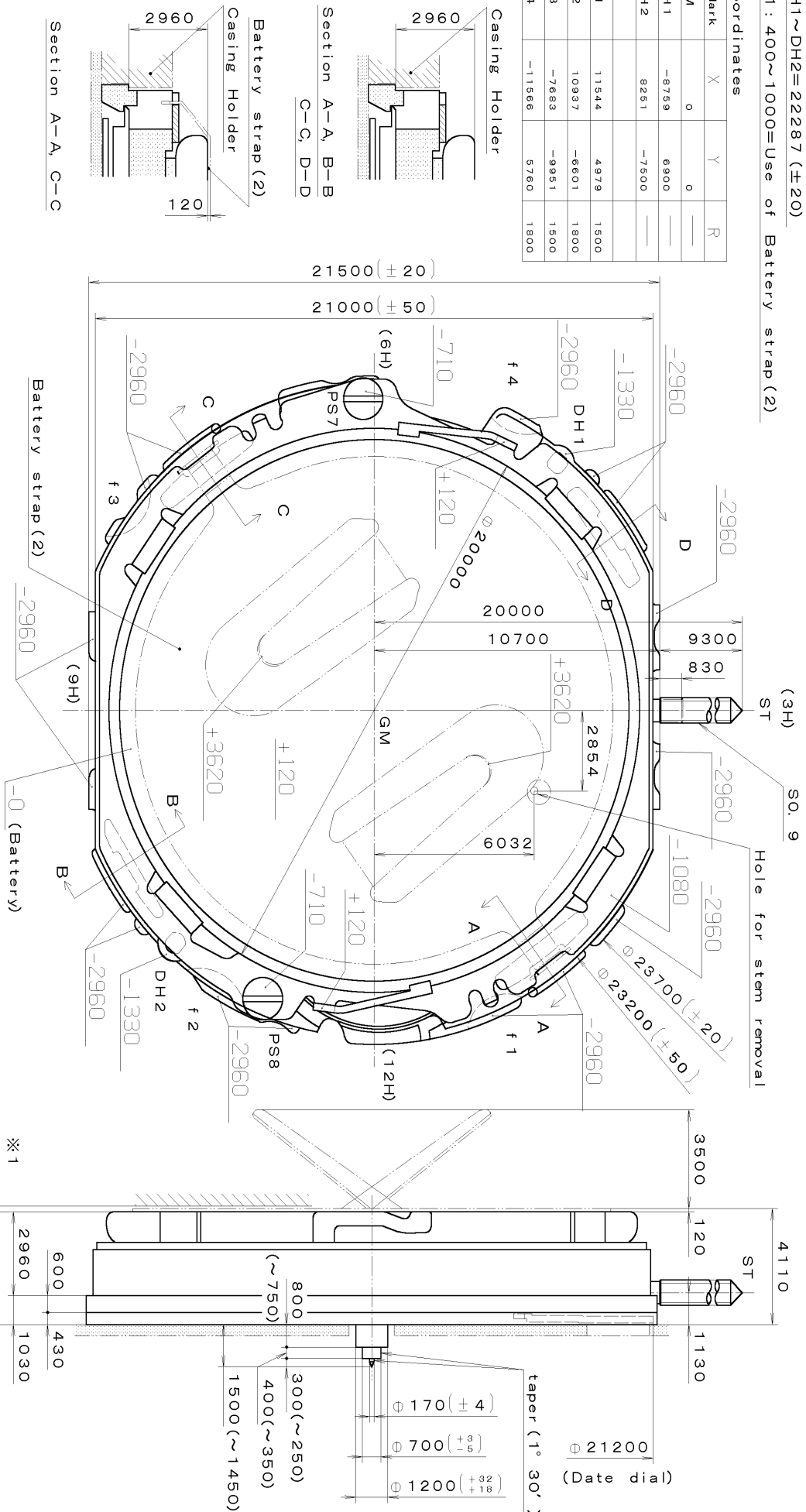
This specifications might be changed without prior notice.

This drawing is provisional and subject to our reconfirmation and/or revision without notice.

xxx T1PW 2S60 (01) xxx (2100 1121 C-01) 00-06-26

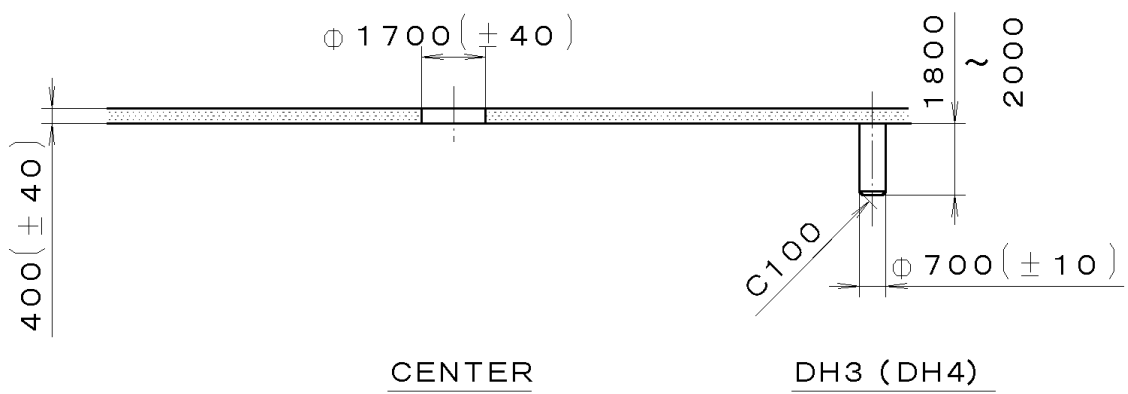
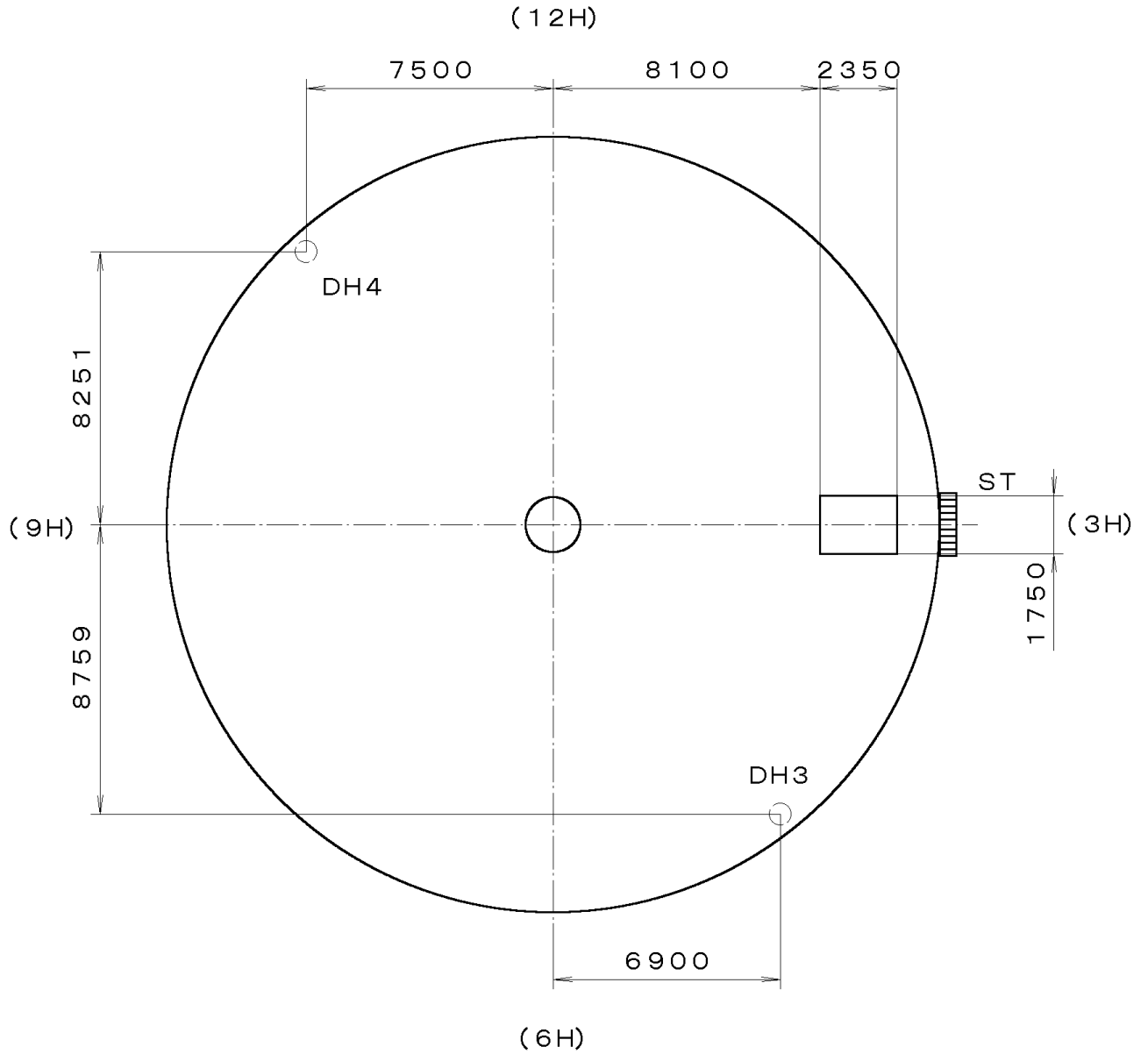
DH1~DH2=22287 (±20)
 ※1: 400~1000=Use of Battery strap (2)

Coordinates			
Mark	X	Y	R
GM	0	0	—
DH1	-8759	6900	—
DH2	8251	-7500	—
f1	11544	4979	1500
f2	10957	-6601	1800
f3	-7683	-9951	1500
f4	-11566	5760	1800



Quantity	Unit	1/1000 mm	Cal. No. : 2S60
△	Scale	7:1	Parts:
△	Date		
△	Drawn		
△	Checked	T. Hiruta	Name: Frame for Case
△	Approved		Drawing No. : 2S60C000
Material			
Heat Treatment			
Hardness			
Plating			
General Tolerances			
Dimensions			
Angles			

This drawing is provisional and subject to our reconfirmation and/or revision without notice.

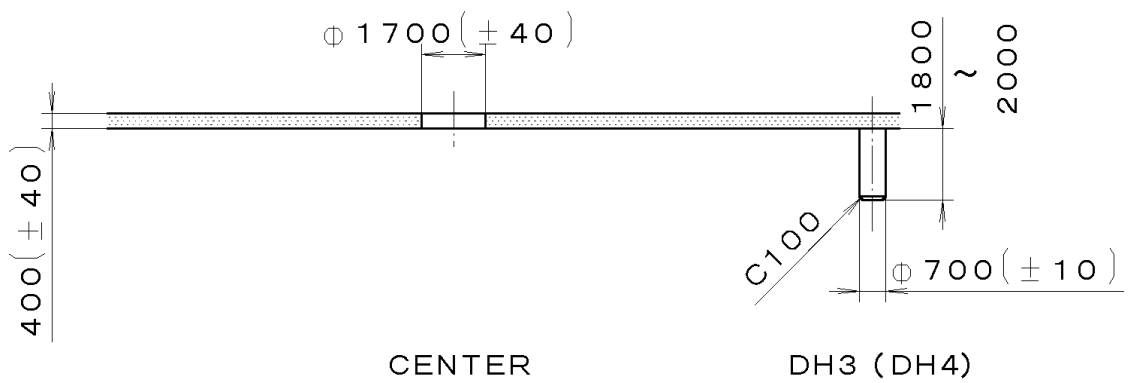
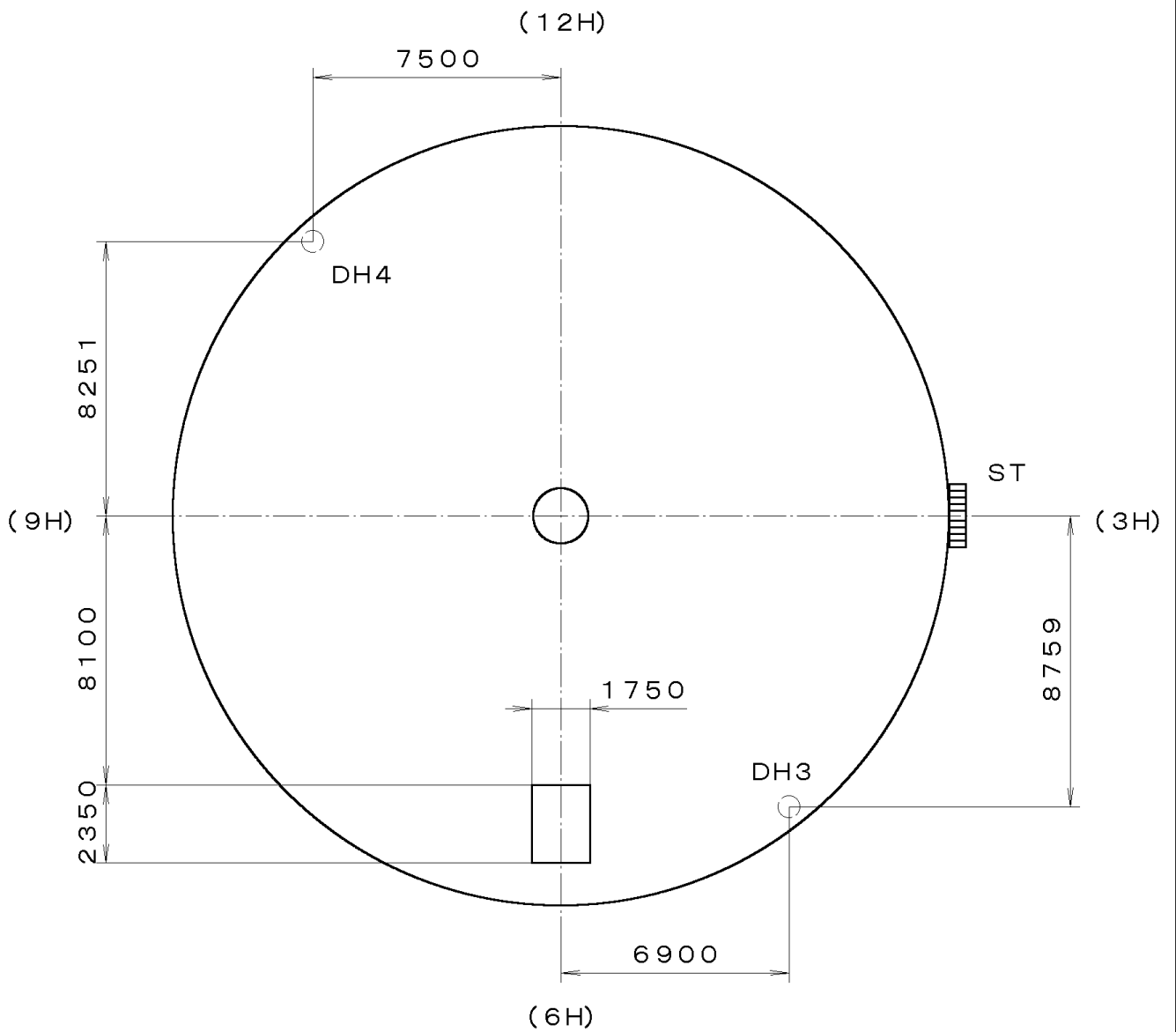


CENTER

DH3 (DH4)

*** T I P W 2S60-00A (01) *** (2100 1121) 00-06-29	7		Quantity		Cal. No. : 2S60-00A
	6		Unit	1/1000 mm	
	5		Scale	5:1	Parts:
	4		Date		
	3		Drawn		
	2		Checked	T. Hiruta	Name:
	1		Approved		Indications for Dial
Material				Drawing No. : 2S60D000	
Heat Treatment		General Tolerances			
Hardness		Dimensions			
Plating		Angles			

This drawing is provisional and subject to our reconfirmation and/or revision without notice.

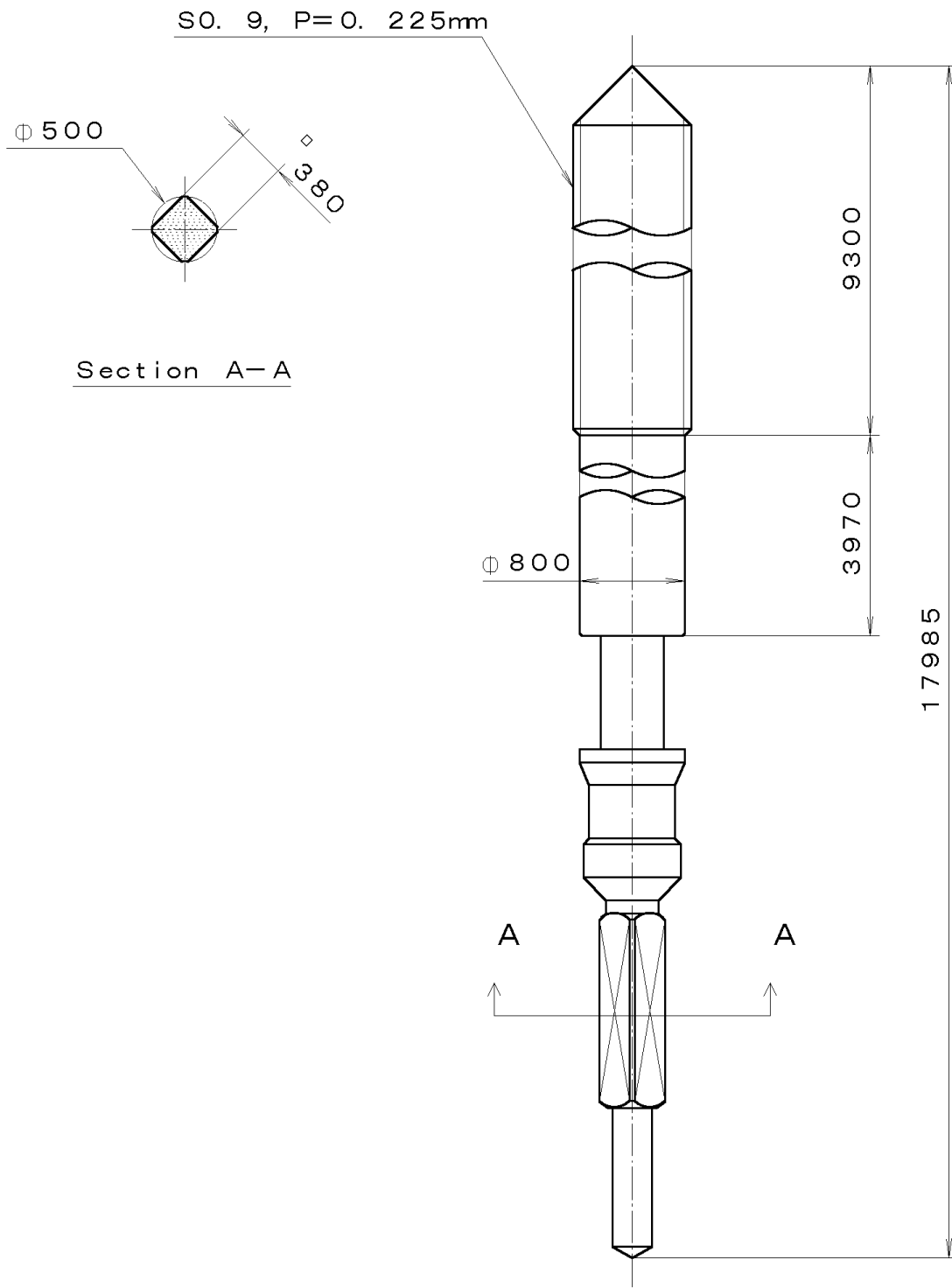


00-06-29
(2100 1121)
2S60-00U

7		Quantity		Cal. No. :	2S60-00U
6		Unit	1/1000 mm	Parts:	
5		Scale	5:1	Name:	Indications for Dial
4		Date		Drawing No. :	
3		Drawn			
2		Checked	T. Hiruta		
1		Approved			
Material					
Heat Treatment		General Tolerances			
Hardness		Dimensions			
Plating		Angles			

This drawing is provisional and subject to our reconfirmation and/or revision without notice.

*** T I P W (01) *** (2100 1121 A-01 A-01) 00-06-22



7			Quantity		Cal. No. :
6			Unit	1/1000 mm	Parts:
5			Scale	20:1	
4			Date		065-501
3			Drawn		
2			Checked	T. Hiruta	Name:
1			Approved		SETTING STEM
Material					Drawing No. : 5010S000
Heat Treatment			General Tolerances		
Hardness			Dimensions		
Plating			Angles		