

MIYOTA

Cal. 9015



AUTOMATIC & MANUAL WINDING MOVEMENT WITH DATE

Basic specification

Ligne	11-1/2'''
Overall diameter	Φ26.0mm
Case fitting diameter	Φ25.6mm
Total height	3.90mm
Vibration frequency	28800 vibrations per hour
Jewels	24 Jewels

Function

Automatic & manual winding
Display by means of hands: hour, minute, second.
Date calendar
Stop second device
Shock-absorber for balance staff

Technical characteristics

Balanceable weight of hands

Second hand	Max. 0.60μN · m
Minute hand	Max. 1.25μN · m
Hour hand	Max. 1.50μN · m

Hands fitting force

Second hand	Max. 30N
Minute hand	Max. 50N
Hour hand	Max. 50N

Lift angle 51°

Casing Non-corresponding to "Divers' watches" defined by ISO6425

Time performance

Accuracy	-10~30 seconds/day
Posture difference	Under 40 seconds/ day
Running time	More than 42 hours

※Accuracy of the mechanical watch is different from the daily rate of the quartz watch and the accuracy will change maximum of several ten seconds during rewinding the spring, then the accuracy of the half winding condition will be different from that of full winding condition.

<Time performance measurement condition>

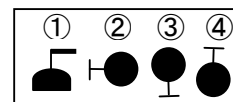
Accuracy

Measure within lapse of 10 ~ 60 minutes from full winding.

Posture difference

Measure accuracy in 4 different postures shown on the right picture within lapse of 10 ~ 60 minutes from full winding.

※Direction of 4 postures ①Date Dial side Up ②6 o'clock side up ③9 o'clock side up ④3 o'clock side up



Running time

Measure the running time from full winding.

※The mainspring becomes fully wound by rotating the ratchet wheel 7.5 times (turning the crown 40 times).

Automatic winding structure

Winding direction : Clockwise (seeing from case back side)



Operating method

Winding the mainspring, adjusting the hand, date is done by the below procedure.

(1) Winding the mainspring

Automatic winding watch can be also manual-winded by turning the crown in "A" position.
Wind 15 ~ 20 times clockwise until second hand starts to move naturally.

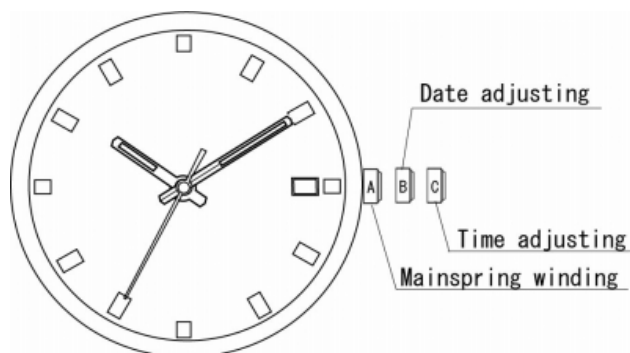
(2) Adjusting date

Adjust the date by rotating the crown in "B" position.

* If the date is adjusted between the hours of around 8:30 PM and 2:00 AM the date may not change on the following day.

(3) Adjusting time

Rotate the crown in "C" position and adjust the standard time.
Then check if it is morning or afternoon and adjust correctly.

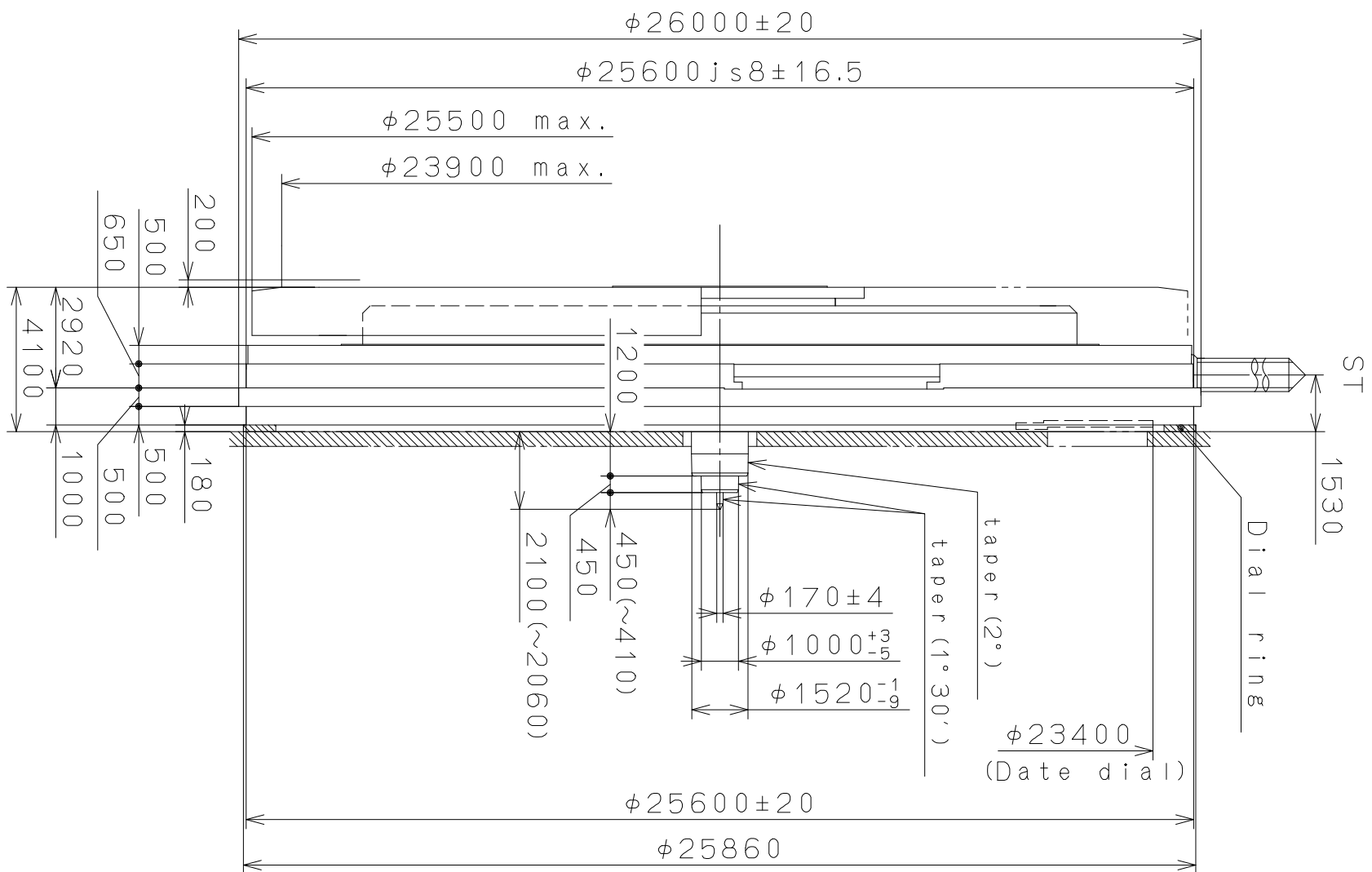
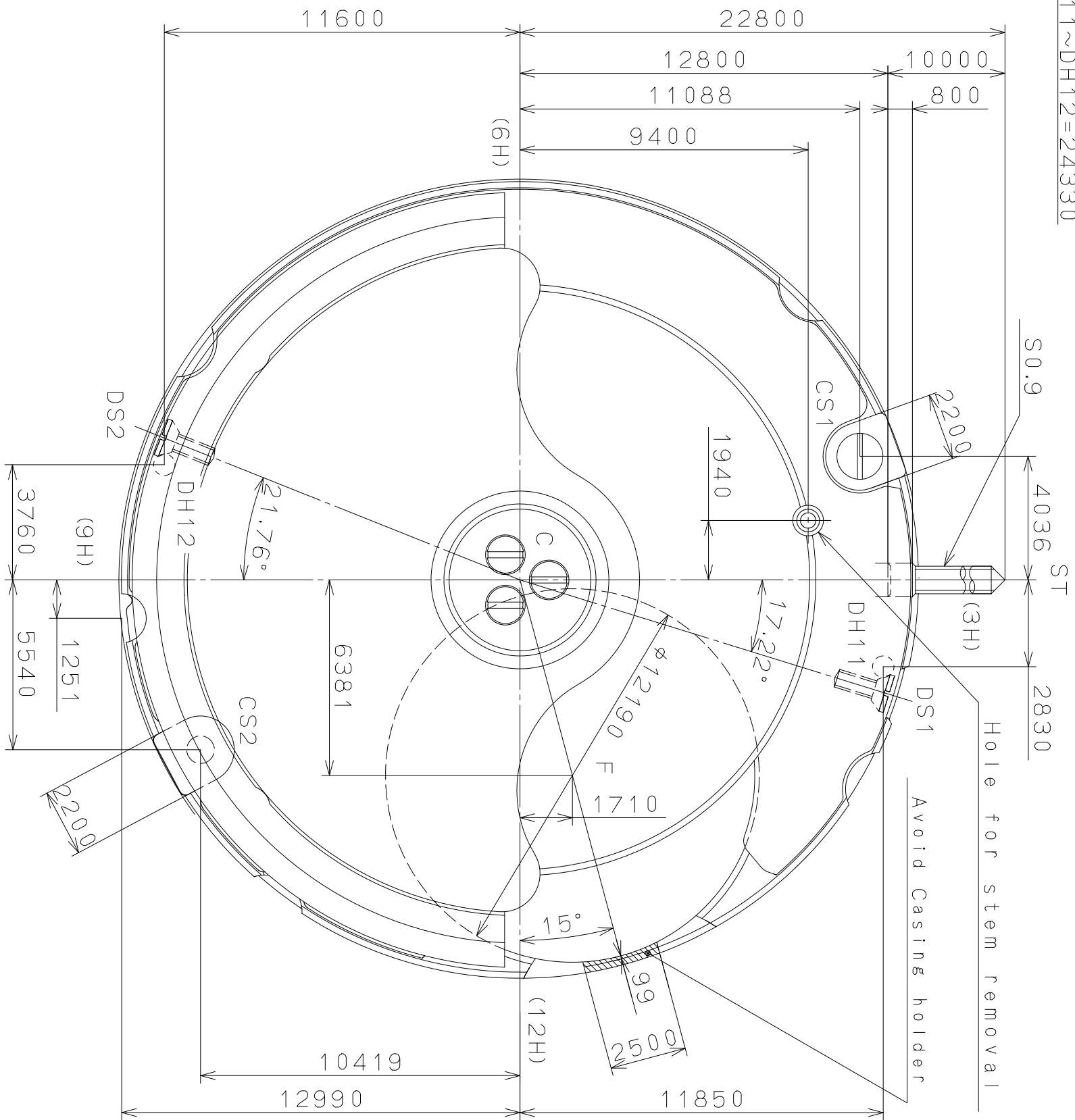


Separated parts

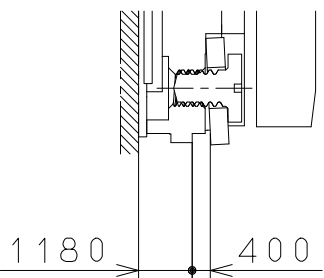
Plastic movement holder	500-002 x 1
Winding stem	065-A05 x 1
Screw for dial fixing	929-808 x 2
Spacer	212-A47 x 1

These specifications might be changed without prior notice.

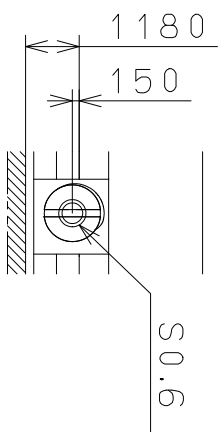
CITIZEN WATCH CO., LTD.



Section CS1, CS2



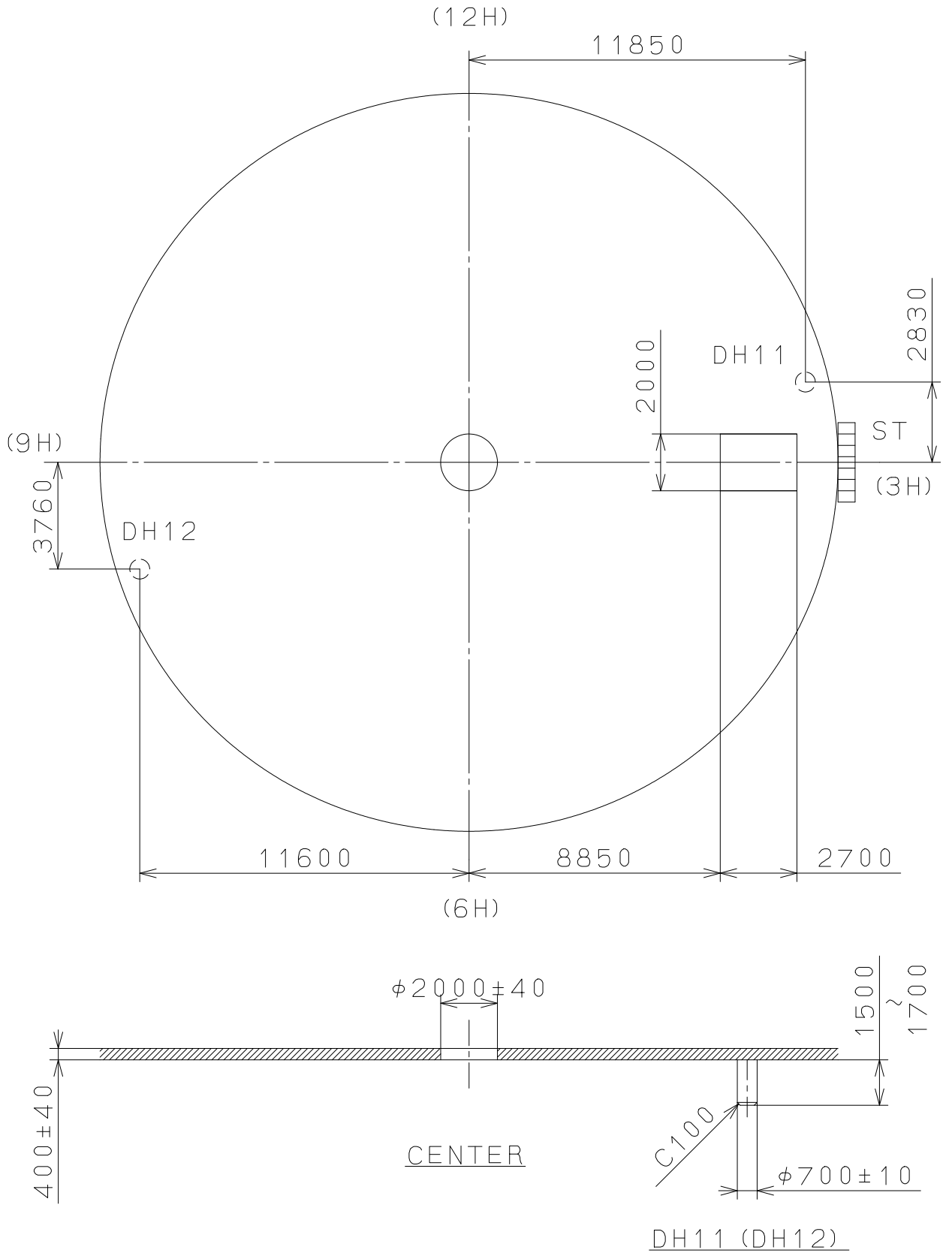
Section DS1, DS2



Material	Alterations	Date	Description	Appro.	Checked	Drawn	N. Suzuki	Name:	Frame for Case
Heat Treatment									
Hardness									
Plating									
Quantity	Unit	Scale	Date	Drawn	Checked	Drawn	N. Suzuki	Name:	Frame for Case
1	1/1000 mm	6:1							
Cal. NO.:	9015	Parts No.:							
Material	Alterations	Date	Description	Appro.	Checked	Drawn	N. Suzuki	Name:	Frame for Case
Heat Treatment									
Hardness									
Plating									
Quantity	Unit	Scale	Date	Drawn	Checked	Drawn	N. Suzuki	Name:	Frame for Case
1	1/1000 mm	6:1							
Cal. NO.:	9015	Parts No.:							
Material	Alterations	Date	Description	Appro.	Checked	Drawn	N. Suzuki	Name:	Frame for Case
Heat Treatment									
Hardness									
Plating									

2009/03/25 (09:00:17)

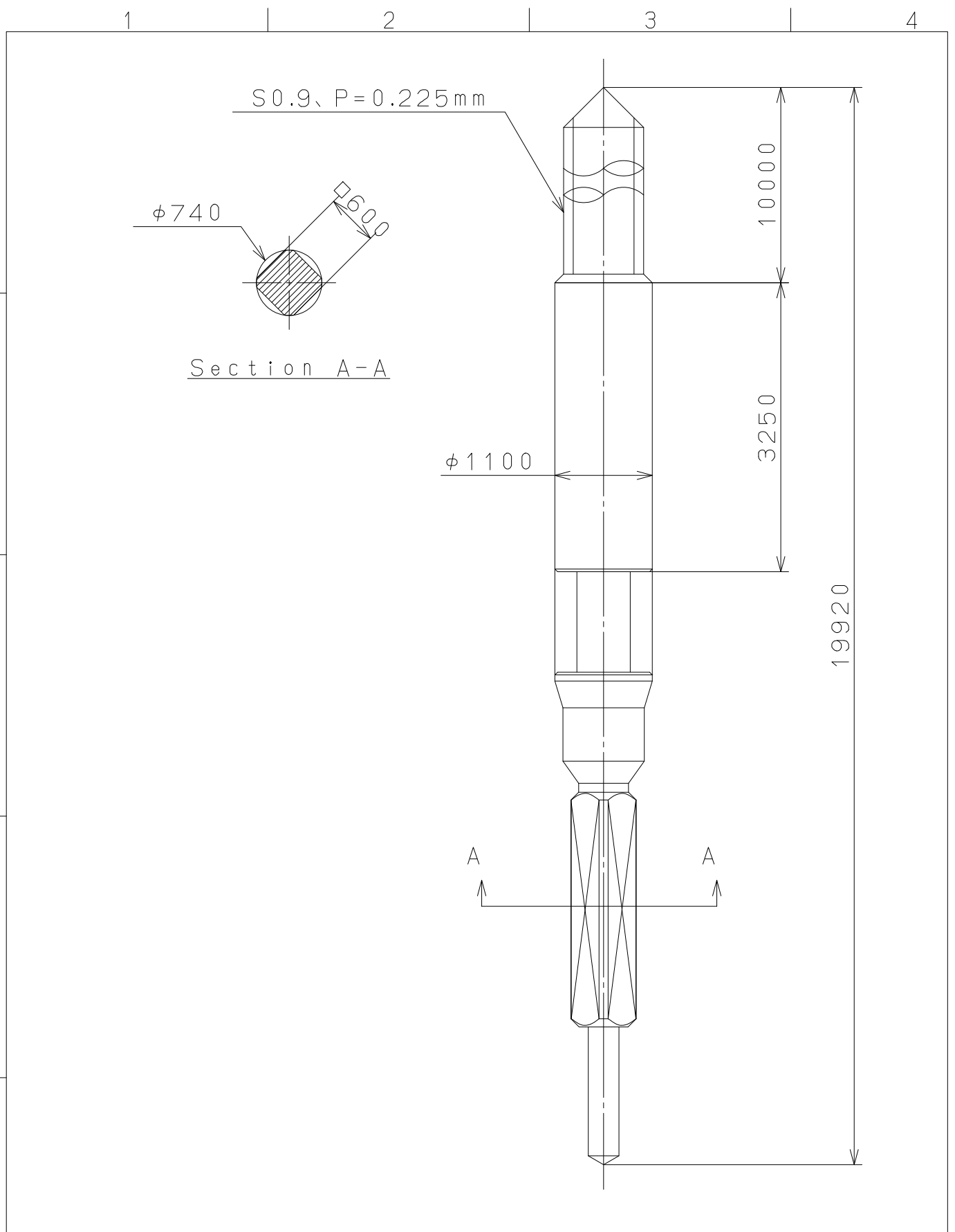
This drawing is provisional and subject to our reconfirmation and/or revision without notice.



△			Quantity		Cal.NO.:
△			Unit	1/1000mm	9015-24A
△			Scale	5:1	Parts No.:
△			Date		
△			Drawn		
Mark	Date	Description	Appro.	Checked	Name:
		Alterations	Approved	N. Suzuki	Indications for Dial
Material					Drawing No.:9015D001
Heat Treatment			General	Tolerances	MIYOTA
Hardness			Dimensions		
Plating			Angles		
CITIZEN WATCH CO.,LTD. TOKYO,JAPAN					

2009/03/19 (15:03:29)

This drawing is provisional and subject to our reconfirmation and/or revision without notice.



△5			Quantity		Cal.NO.:
△4			Unit	1/1000mm	
△3			Scale	17:1	Parts No.:
△2			Date		065-A05
△1			Drawn		
Mark	Date	Description	Appr.	Checked	Name:
		Alterations		Approved	SETTING STEM
Material					Drawing No.: A050S000
Heat Treatment			General	Tolerances	MIYOTA
Hardness			Dimensions		
Plating			Angles		
					CITIZEN WATCH CO., LTD. TOKYO, JAPAN