



Cal. FS16/17 FS26/27 DUAL TIME CHRONOGRAPH

1. Basic Specification

CAL.	FS16	FS17	FS26	FS27
Push Buttons	SLANTED	PARALLEL	SLANTED	PARALLEL
Total height	5.10mm	5.25mm	5.10mm	5.25mm
Ligne	10 1/2'''			
Overall diameter	Φ 23.7mm × 22.0mm (3H-9H)			
Case fitting diameter	Φ 23.3mm × 22.0mm (3H-9H)			
				
Date	○			
Function	Dual Time , Chronograph 1/1sec. Basis (Up to 59min. 59sec.)			
Bateary & Life	SR626SW 2YEARS *			

*based on 1 hour/day chronograph use

<TIME STANDARD>

Type of quartz: Tuning fork type quartz crystal

Frequency : 32,768Hz

Accuracy : ±20 second / month worn under normal circumstances

< Balanceable weight of hand >

Minute hand Max. 0.4 μN·m

Second hand Max. 0.035 μN·m

Other small hands Max. 0.02 μN·m

< Function >

Chronograph 1/1 sec. Basis (Up to 59 min. 59 sec.)

Dual Time Function

Powercell Saving Reset Mechanism(PSRM)

Over-loading Compensation Device(OLCD)

Digital Frequency Control(DFC) for time adjustment

2. Separated Parts

Setting stem	065- 549 × 1
Length from movement center to far end of setting stem	20.00mm
Thread	Φ 0.9mm × 9.06mm

3. Others

* Measurement of time rate

The unit(gate) time of measurement must be set at "10 sec." or integer fold value of 10 sec. owing to the DFC system, and the measurement must be performed in the form of complete watch.

* Marking on movement

JAPAN
MIYOTA CO.
(CAL. NO.)
NO JEWELS

* Typical clearance

Mov't - Case: minimum 200 microns

Top of hands - 300 - 400 microns *

* subject to the glass, case structure, and the length of hand

* Note

Please use aluminum material hand for Chrono second hand

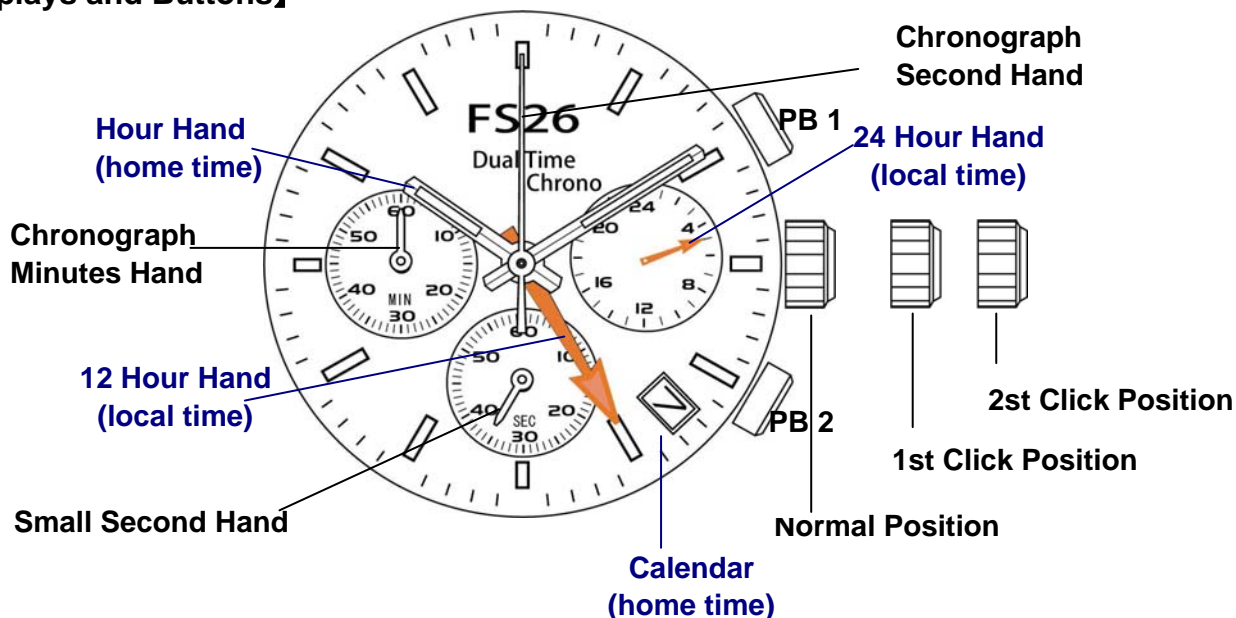
* TACHYMETER

The tachymeter is the device which measures the speed of an automobile. Knowing is how many seconds the car covers a distance of 1km, the meter can measure the approximate average speed per hour during a journey (up to the maximum measurable range of tachymeter is 60 seconds.)

If the chronograph is started at the same time as measurement, and stopped after 1 km, the average speed per hour can be determined according to the position of the second hand. If the car covers the distance of 1km in 45 seconds, the average hourly speed during the journey will be about 80 km.

4. Instruction Manual

【Displays and Buttons】



A) SETTING THE TIME

1. Pull the crown out to the 2nd Click Position.
2. Turn the crown to set the hour and minute hands. *
* home time hand, local time hand , 24hour hand are linked.

B) SETTING THE DATE

* If the date is set between the hours of around 9:00 PM and 1:00 AM, the date may not change on the following day.

1. Pull the crown out to the 1st Click Position.
2. Turn the crown clockwise to set the date.
3. After the date has been set, push the crown back to the normal position.
* Calendar is linked to Hour Hand (local time).

C) USING THE TIME DIFFERENT CORRECTION

When moving to a country or area which is in a different timezone, the current time in the "local time" can be corrected.

As the date calendar is linked with time, the date in the " local time" is also corrected.

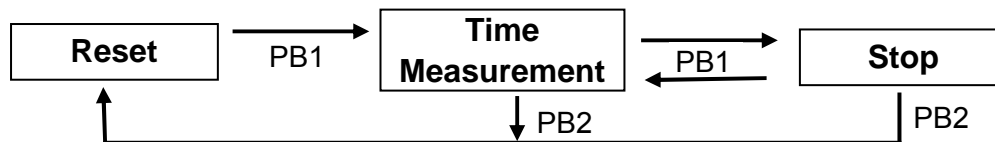
1. Pull the crown out to the 1st click position when the second hands has reached the zero position.
Turn the crown anticlockwise to set the "second time zone". *
* Date may gain in some countries or regions. In this case, please set the date also when you set the time.
2. After the date has been set, push the crown back to the normal position.

D) USING THE CHRONOGRAPH

This chronograph is able to measure and display time in 1/1 second unit up to maximum of 1 hour.

【Measuring time with the chronograph】

1. The chronograph can be started and stopped each time button "PB1" is pressed.
2. To reset, press button "PB2" and the chronograph second & minute hands return to the zero positions.



E) CHRONOGRAPH RESET (INCL. AFTER REPLACING BATTERY)

This procedure should be performed when the chronograph second hand do not return to the zero second position after the chronograph has been reset, and including after the battery has been replaced.

1. Pull the crown to the 2nd Click Position.
2. Press the button "PB1" once to set the chronograph second hand ahead one scale, or keep pushing to set the chronograph second hands quickly.
3. Once the chronograph second hand has been zeroed, reset the time and return the crown to its normal position.

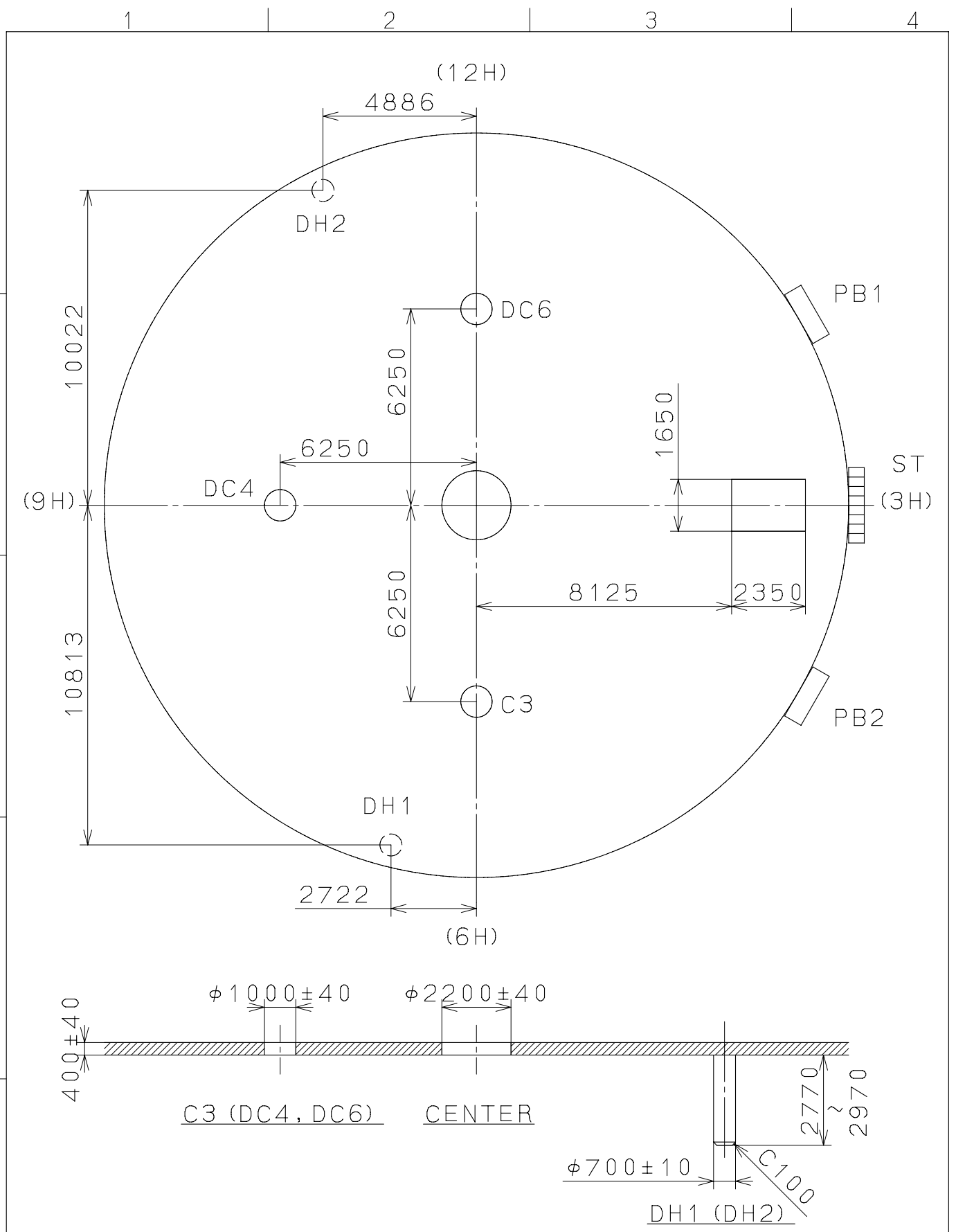
* Do not return crown to normal position while chronograph second hand return to 12:00 (ZERO) position.
Hand stops on the way when crown are returned to normal position and these positions are recognized as 12:00 (ZERO) position.

These specifications might be changed without prior notice.

CITIZEN WATCH CO., LTD.

2008/05/30 (09:20:11)

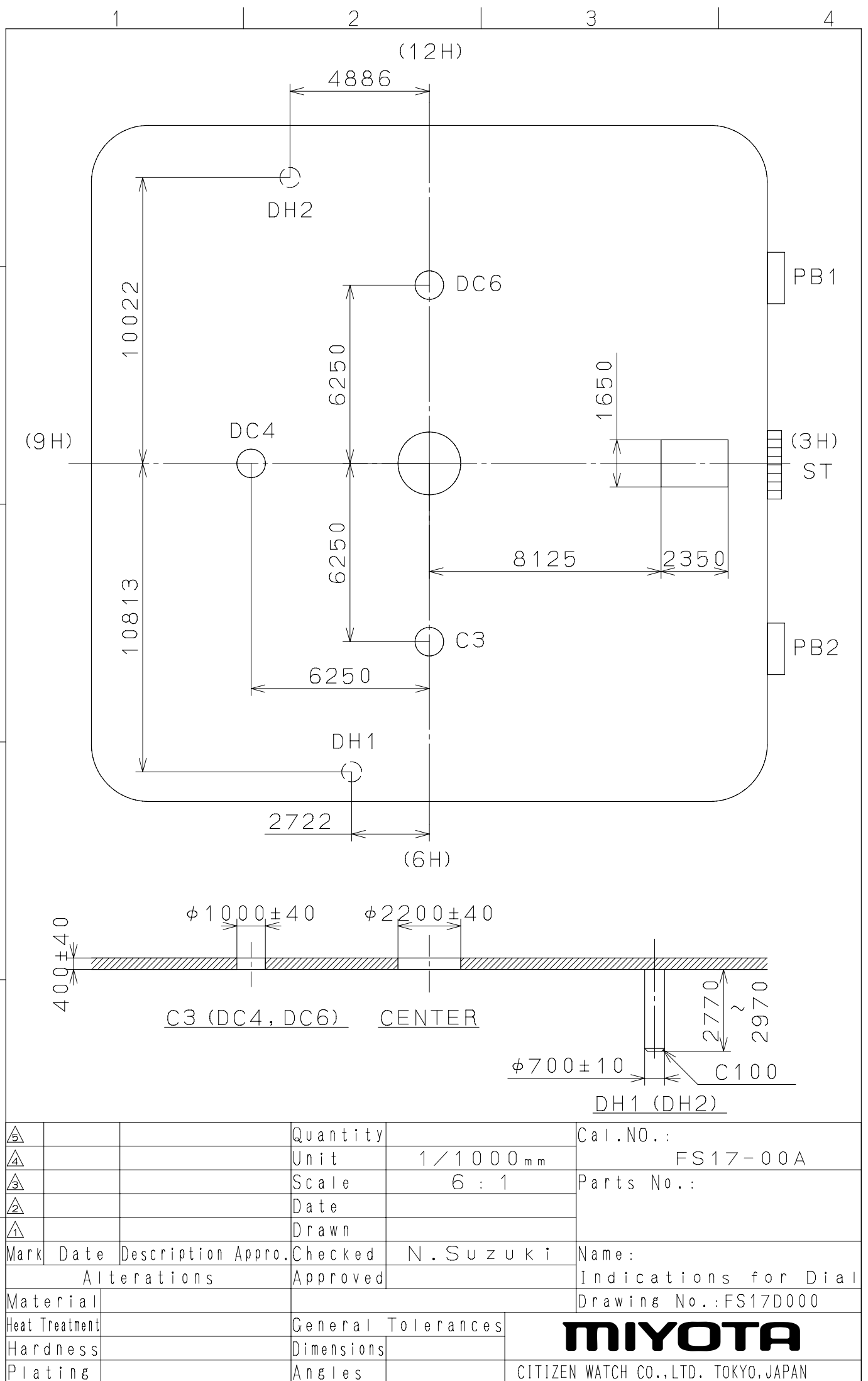
This drawing is provisional and subject to our reconfirmation and/or revision without notice.



△			Quantity		Cal.NO.:
△			Unit	1/1000 _{mm}	FS16-00A
△			Scale	6:1	Parts No.:
△			Date		
△			Drawn		
Mark	Date	Description	Appr.	Checked	Name:
		Alterations	Approved	N. Suzuki	Indications for Dial
Material					Drawing No.: FS16D010
Heat Treatment			General Tolerances	MIYOTA CITIZEN WATCH CO., LTD. TOKYO, JAPAN	
Hardness			Dimensions		
Plating			Angles		

2008/06/03 (13:35:01)

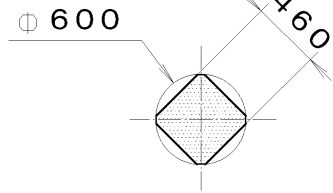
This drawing is provisional and subject to our reconfirmation and/or revision without notice.



△			Quantity		Cal. NO.:
△			Unit	1 / 1000 mm	FS17-00A
△			Scale	6 : 1	Parts No.:
△			Date		
△			Drawn		
Mark	Date	Description	Appr.	Checked	Name:
		Alterations	Approved	N. Suzuki	Indications for Dial
Material					Drawing No.: FS17D000
Heat Treatment				General Tolerances	MIYOTA
Hardness				Dimensions	
Plating				Angles	
					CITIZEN WATCH CO., LTD. TOKYO, JAPAN

This drawing is provisional and subject to our reconfirmation and/or revision without notice.

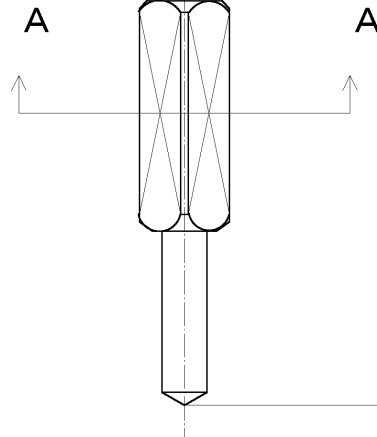
*** T I P W 065-549 (01) *** (2100 1121) 01-12-07



Section A-A

S0. 9, P=0. 225mm

⌀ 1000



<table border="1"> <tr><td>7</td><td></td></tr> <tr><td>6</td><td></td></tr> <tr><td>5</td><td></td></tr> <tr><td>4</td><td></td></tr> <tr><td>3</td><td></td></tr> <tr><td>2</td><td></td></tr> <tr><td>1</td><td></td></tr> </table>		7		6		5		4		3		2		1		Quantity		Cal. No. :	
7																			
6																			
5																			
4																			
3																			
2																			
1																			
Material		Unit	1/1000 mm	Parts:	065-549														
Heat Treatment		Scale	20:1																
Hardness		Date		Name:	SETTING STEM														
Plating		Drawn		Drawing No. :	5490S000														
		Checked	T. Hiruta	CITIZEN WATCH CO., LTD. TOKYO, JAPAN															
		Approved																	
		General Tolerances																	
		Dimensions																	
		Angles																	