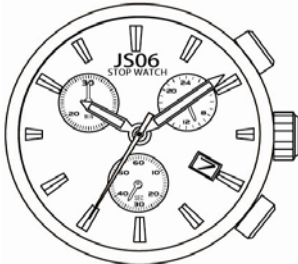




Cal. JS06 / 16 / 26 HIGH HAND STOPWATCH

1. Basic Specification

| CAL. | JS06 HIGH HAND | JS16 HIGH HAND | JS26 HIGH HAND |
|-----------------------|---|--|---|
| Ligne | 12 1/2''' | | |
| Overall diameter | Φ 28.2 × 26.0(3H-9H) | | |
| Case fitting diameter | Φ 27.6 × 26.0(3H-9H) | | |
| Total height | 4.30mm | | |
| |  |  |  |
| | eye position is same as JS05 | eye position is same as JS15 | eye position is same as JS25 |
| Date | ○ | | |
| Bateery & Life | Approx.2years * 30minutes chronograph operation per day | | |
| Battery | SILVER OXIDE SR621SW or equivalent | | |

< Time Standard >

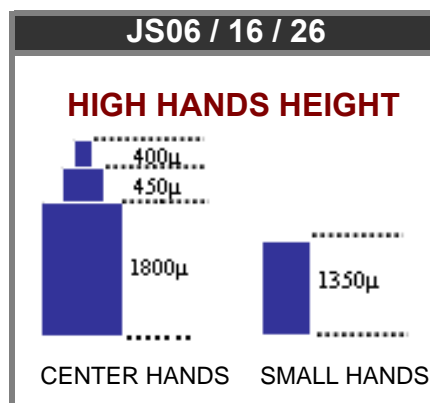
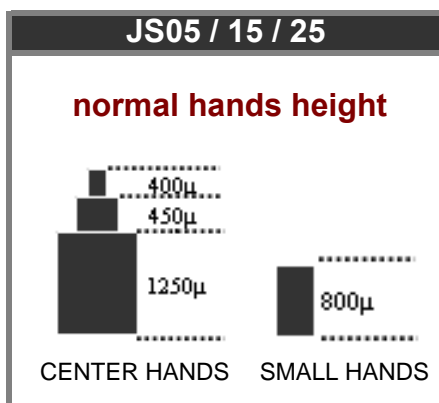
Type of quartz: Tuning fork type quartz crystal
 Frequency : 32,768Hz
 Accuracy : ±20 second / month worn under normal circumstances

< Balanceable weight of hand >

Minute hand Max. 0.4μN.m
 Second hand Max. 0.09μN.m
 Other small hands Max. 0.02μN.m

< Function >

Stopwatch 1 sec. basis (Up to 29 min. 59 sec.)
 Powercell Saving Reset Mechanism(PSRM)
 Over-loading Compensation Device(OLCD)
 Digital Frequency Control(DFC) for time adjustment



2. Separated Parts

| | |
|--|-------------------|
| Setting stem | 065- 505 × 1 |
| Length from movement center to far end of setting stem | 20.03mm |
| Thread | Φ 0.9mm × 11.68mm |

3. Others

* Measurement of time rate

The unit(gate) time of measurement must be set at "10 sec." or integer fold value of 10 sec. Owing to the DFC system, and the measurement must be performed in the form of complete watch.

* Marking on movement

JAPAN
MIYOTA CO.
(CAL. NO.)
NO JEWELS

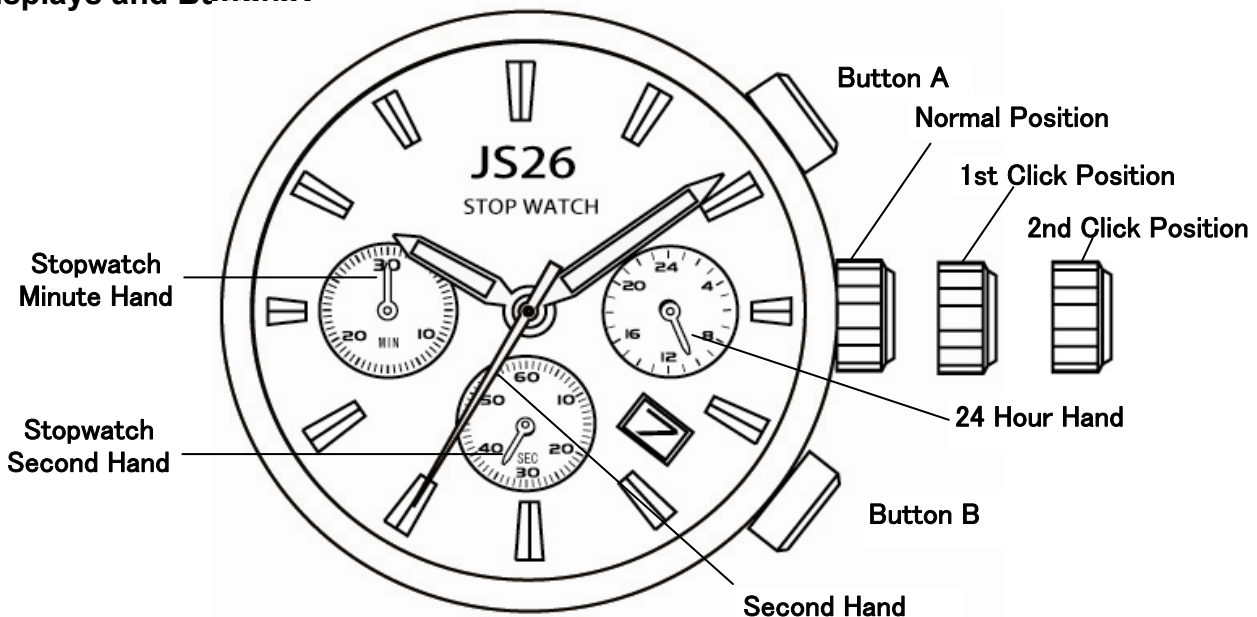
* Typical clearance

Mov't - Caseback minimum 150 microns
Top of hands - Glass 300 - 400 microns *

* subject to the glass, case structure, and the length of hand

4. Instruction Manual

【Displays and Buttons】



A) SETTING THE TIME

1. Pull the crown out to the 2nd Click Position.
2. Turn the crown to set hour and minute hands.
3. After the time has been set, push the crown back to the Normal position.

B) SETTING THE DATE

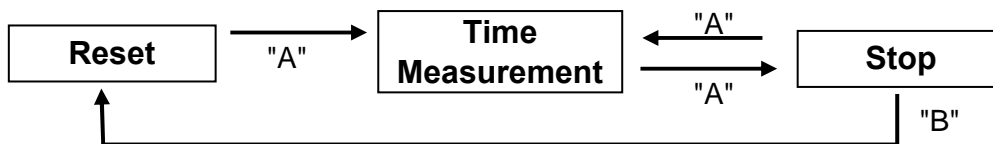
1. Pull the crown out to the 1st Click Position.
2. Turn the crown clockwise to set the date.
 - * If the date is set between the hours of around 9:00 PM and 1:00 AM, the date may not change on the following day.
3. After the date has been set, push the crown back to the Normal position.

C) USING THE STOPWATCH

This stopwatch is able to measure and display time in 1/1 second united up to maximum of 30 minutes
Stopwatch will stop automatically after running continuously for 30 minutes.

【Measuring time with the stopwatch】

1. Press button "A" to start the stopwatch.
2. The stop watch can be started and stopped each time button "A" is pressed.
3. Pressing button "B" resets the stopwatch and stopwatch minute and second hands return to their Zero positions.



D) STOPWATCH RESET (INCL. AFTER REPLACING BATTERY)

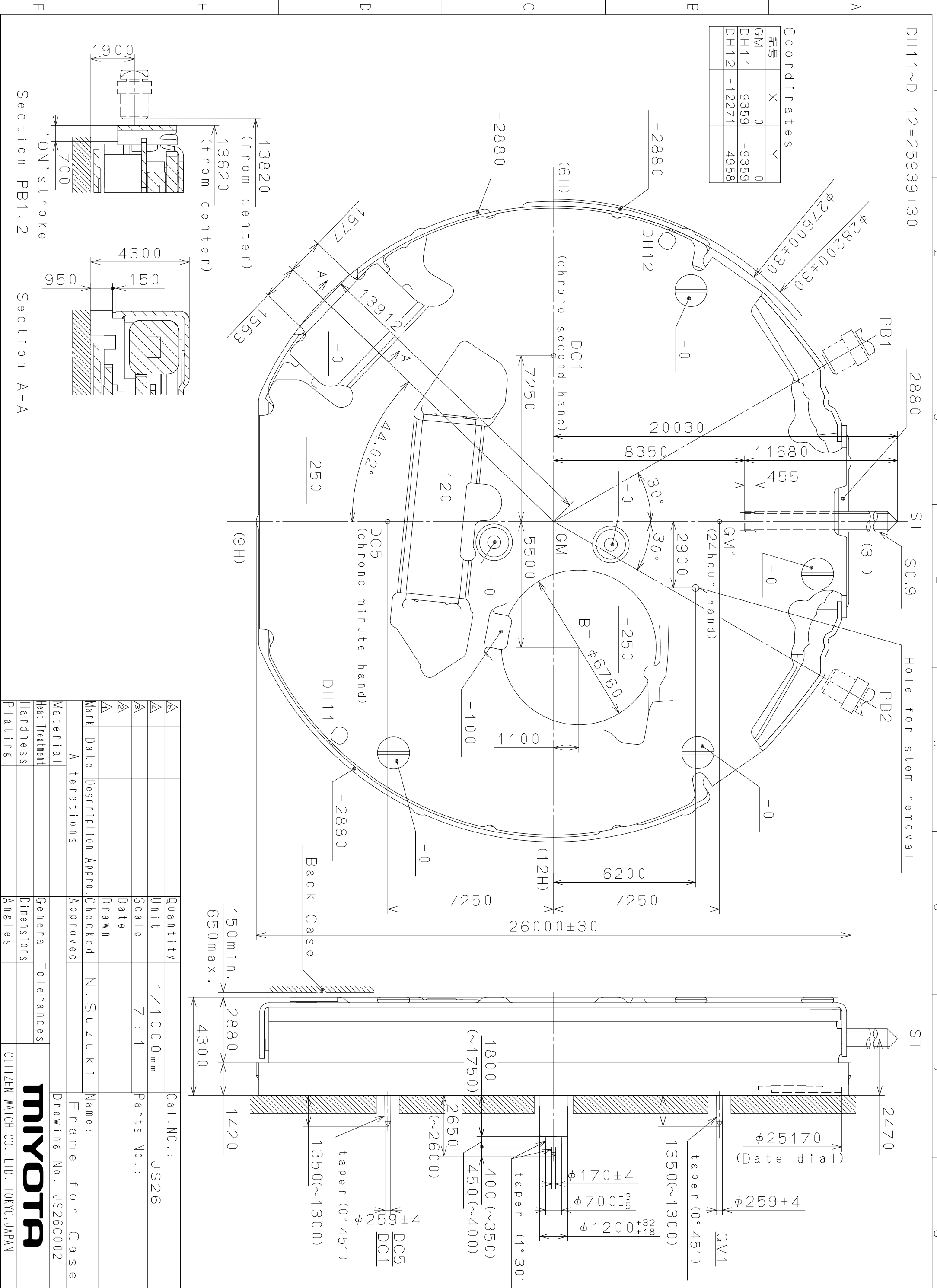
This procedure should be performed when the stopwatch second hand does not return to the Zero position.

1. Pull the crown out to the 2nd Click Position.
2. Press the button "A" once to set the stop watch second hand to the Zero position.
 - * The stopwatch minutes hand is synchronized with stop watch second hand.
 - * The stopwatch second hand can be advanced rapidly by continuously pressing button "A".
3. Once the hands been zeroed, reset the time and return the crown to its normal position.

These specifications might be changed without prior notice.

CITIZEN WATCH CO., LTD.

This drawing is provisional and subject to our reconfirmation and/or revision without notice.

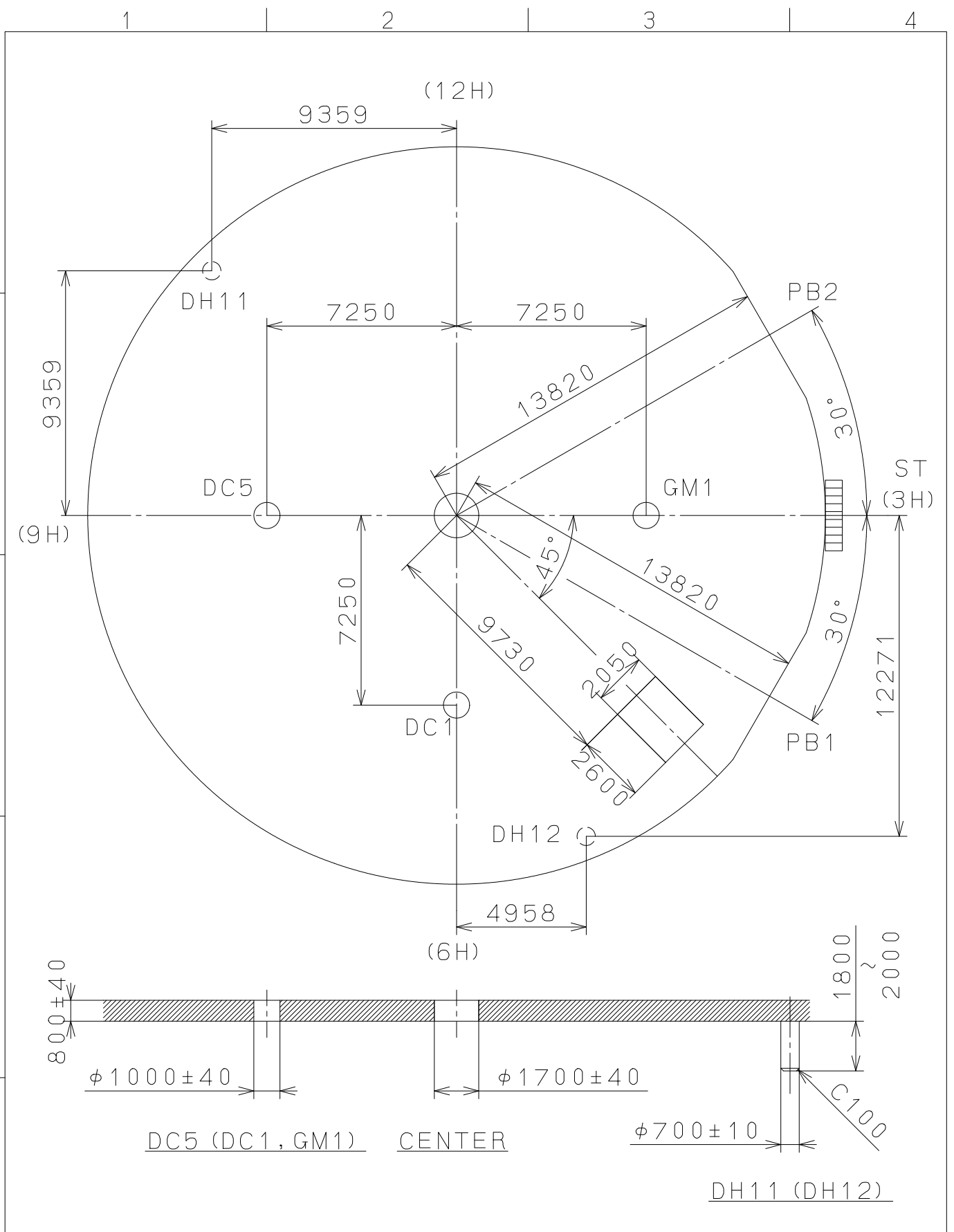


| | | | | | | | | | | | |
|--------------------|-------------|------|------|-------------|-----------|-------|-------|---------|----------|-----------------------|--|
| Material | Alterations | Date | Mark | Quantity | Unit | Scale | Drawn | Checked | Approved | Name: | |
| Heat Treatment | | | | 1 | 1/1000 mm | 7:1 | | | | N. Suzuki | |
| Hardness | | | | | | | | | | | |
| Plating | | | | | | | | | | | |
| General Tolerances | | Date | | Description | | Date | | Checked | | Approved | |
| | | | | | | | | | | N. Suzuki | |
| | | | | | | | | | | Name: | |
| | | | | | | | | | | Frame for Case | |
| | | | | | | | | | | Drawing No.: JS26C002 | |
| | | | | | | | | | | Cal. NO.: JS26 | |
| | | | | | | | | | | Parts No.: | |

MIYOTA
CITIZEN WATCH CO., LTD. TOKYO, JAPAN

2010/02/01 (10:21:19)

This drawing is provisional and subject to our reconfirmation and/or revision without notice.

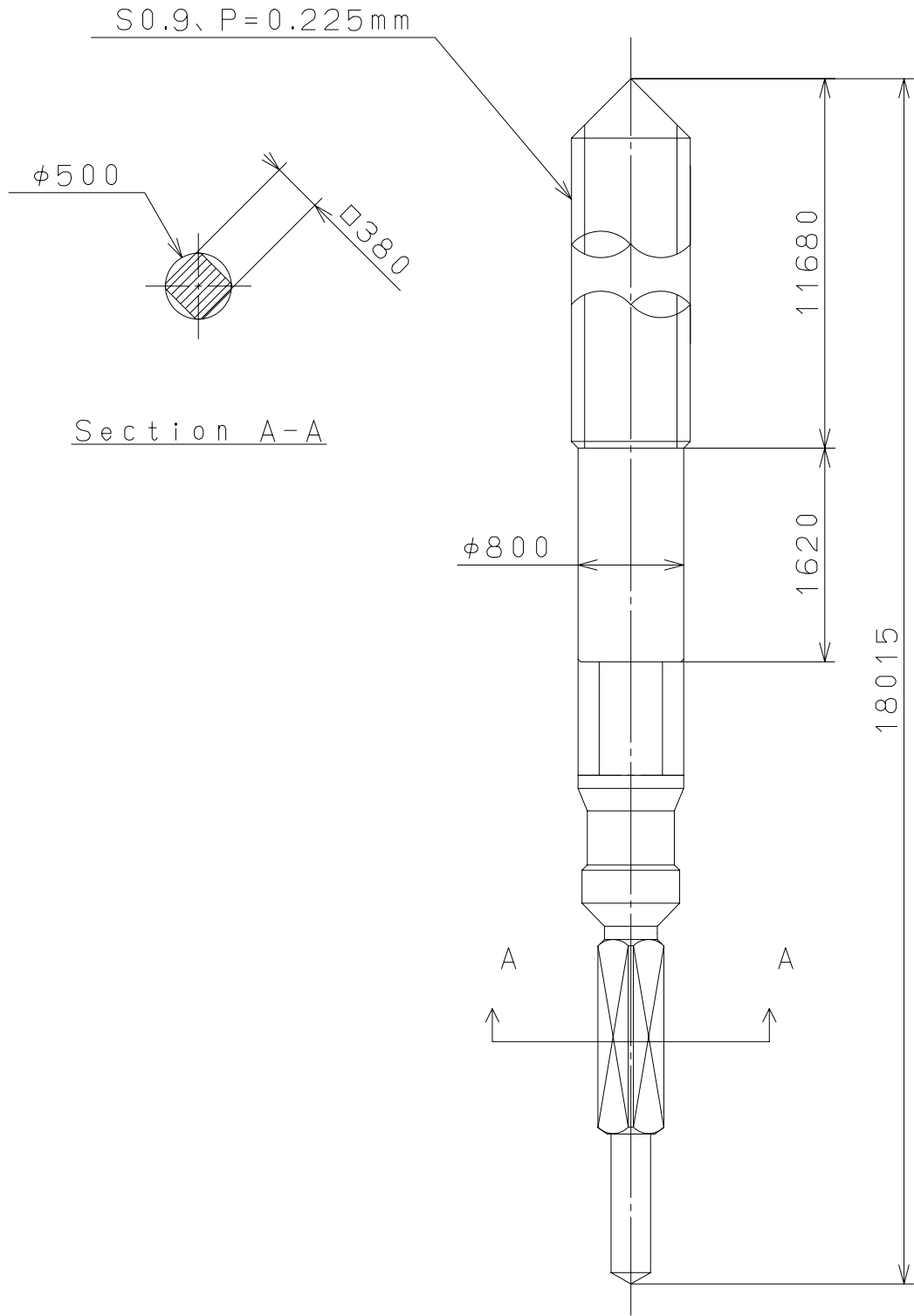


| | | | | | |
|----------------|------|-------------|--------------------|--------------------------------------|-----------------------|
| △ | | | Quantity | | Cal.NO.: |
| △ | | | Unit | 1/1000 _{mm} | JS26-00C |
| △ | | | Scale | 5 : 1 | Parts No.: |
| △ | | | Date | | |
| △ | | | Drawn | | |
| Mark | Date | Description | Appr. | Checked | Name: |
| | | Alterations | Approved | N. Suzuki | Indications for Dial |
| Material | | | | | Drawing No.: JS26D000 |
| Heat Treatment | | | General Tolerances | | |
| Hardness | | | Dimensions | | |
| Plating | | | Angles | | |
| | | | | CITIZEN WATCH CO., LTD. TOKYO, JAPAN | |

2006/12/25 (07:50:10)

This drawing is provisional and subject to our reconfirmation and/or revision without notice.

A
B
C
D
E
F



| | | | | | |
|----------------|------|-------------|----------|--------------------|--------------------------------------|
| | | | Quantity | | Cal.NO.: |
| | | | Unit | 1 / 1000 mm | |
| | | | Scale | 20 / 1 | Parts No.: |
| | | | Date | | 065-505 |
| | | | Drawn | | |
| Mark | Date | Description | Appr. | Checked | Name: |
| | | Alterations | | Approved | SETTING STEM |
| Material | | | | | Drawing No.: 5050S000 |
| Heat Treatment | | | | General Tolerances | MIYOTA |
| Hardness | | | | Dimensions | |
| Plating | | | | Angles | |
| | | | | | CITIZEN WATCH CO., LTD. TOKYO, JAPAN |