

## Cal. GL30/GL10/GM10/GN10 SLIM G SERIES

### 1. Basic Specification

Calibre	GL30	GL10	GM10	GN10
Ligne	6 3/4 x 8'''		10 1/2'''	8 3/4'''
Overall length	15.3 x 18.2	16.1 x 18.2		
Case fitting length	15.3 x 17.8	16.1 x 17.8		
Overall diameter			Φ23.7 x 22.6(3H-9H) x 22.6(6H-12H)	Φ20.0 x 18.0(3H-9H)
Case fitting diameter			Φ23.3 x 21.4(3H-9H) x 22.1(6H-12H)	Φ19.4 x 17.0(3H-9H)
Total height	2.28mm	2.71mm		
Hands	3 Hands			
Date	N/A	○		
Battery Life	3 Years			
Battery	SILVER OXIDE SR621SW or equivalent			

#### < Time Standard >

Type of quartz : Tuning fork type quartz crystal  
 Frequency : 32,768Hz  
 Accuracy : ±20 second / month worn under normal circumstances

#### <Others>

Driving system : Two-pole stepping motor  
 Jewel : No(0) jewels

#### <Additional Mechanisms>

Second hand stopping at optional position  
 Super Quick Date Change by turning crown (except GL30)  
 Powercell Saving Reset Mechanism(PSRM)  
 Over-loading Compensation Device(OLCD)  
 Digital Frequency Control(DFC) for time adjustment

#### < Balanceable weight of hand >

Minute hand Max. 0.4μNm  
 Second hand Max. 0.09μNm

### 2. Separated Parts

Calibre	GL30	GL10	GM10	GN10
Setting stem	065-541	065-547	065-543	065-547

### 3. Remarks

#### \* Measurement of time rate

The unit(gate) time of measurement must be set at "10 sec." or integer fold value of 10 sec. Owing to the DFC system, and the measurement must be performed in the form of complete watch.

#### \* Marking on movement

**NO JEWELS  
 ( CAL. NO.)  
 MIYOTA CO.  
 JAPAN**

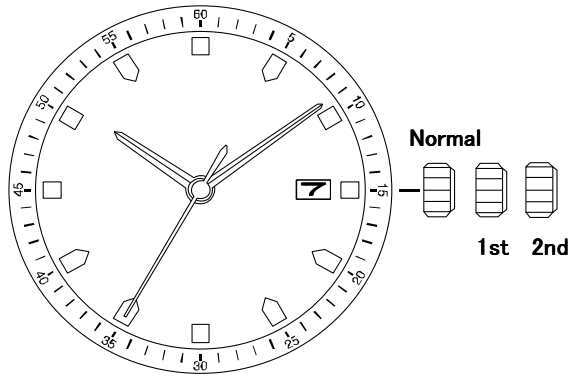
#### \* Typical clearance

Mov't - Caseback minimum 150 μm  
 Top of hands - Glass 300 - 400 μm \*  
 \* subject to the glass, case structure, and the length of hand

#### \* Interchangeability of appearance components:

\*respectively Date to Date  
 Dial Foot positon & the diameter same as Cal. 1L/1M series\*  
 Date window position same as Cal. 1L/1M series\*  
 Hands same as Cal. 20,21,1L/1M series\*  
 Mov't Holder Basically same as 1L/M\* (Please be careful not to push 3H & 9H side by your movement holder except GL30.)  
 Case same as Cal. 1L/1M series (except GN10)\*

**【Displays and Buttons】**



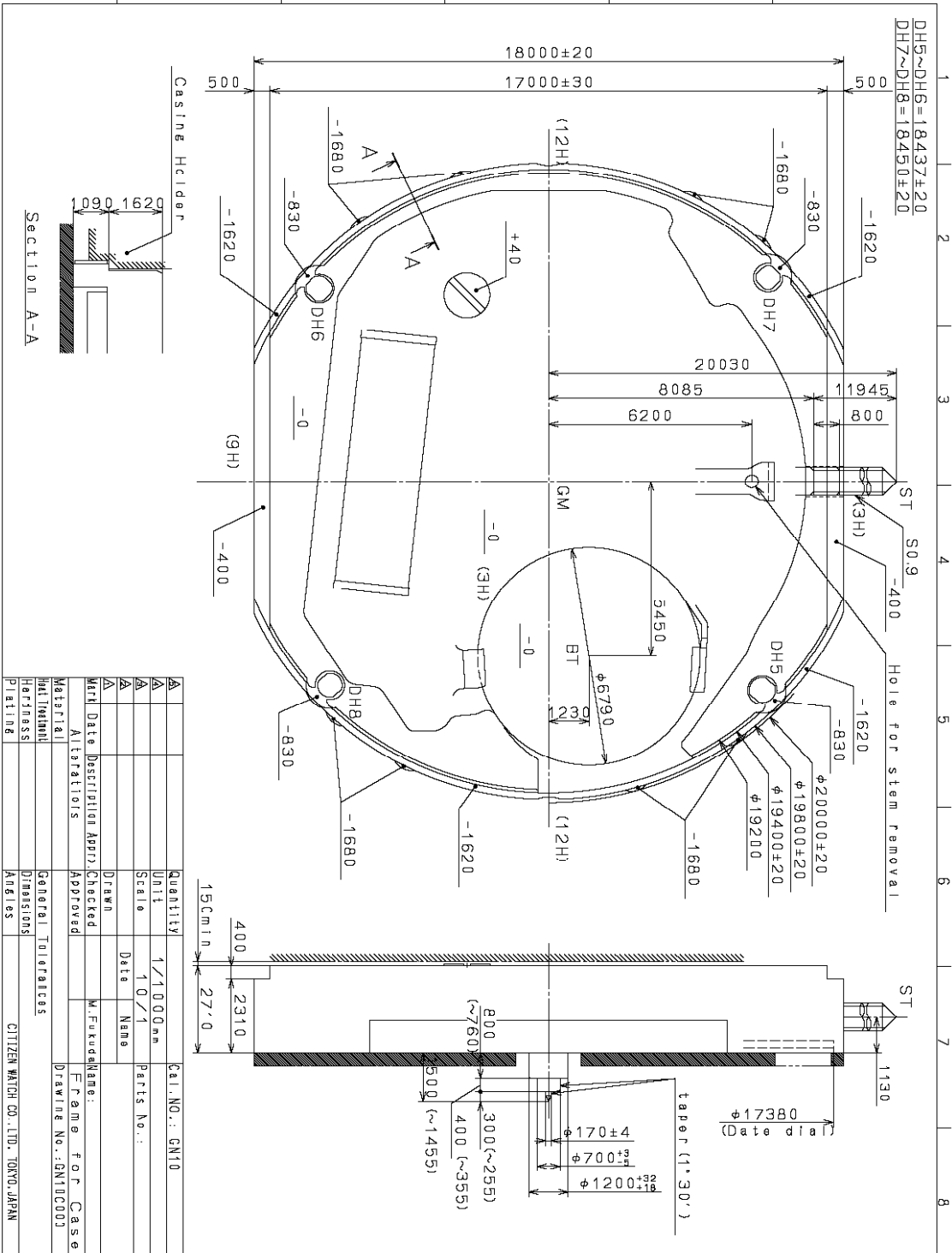
**A) SETTING THE TIME**

1. Pull the crown out to the 2nd Click Position. (GL30 : 1st Click Position)
2. Turn the crown to set hour and minute hands.
3. After the time has been set, push the crown back to the Normal position.

**B) SETTING THE DATE (except GL30)**

1. Pull the crown out to the 1st Click Position.
2. Turn the crown counter-clockwise to set the date.  
\* If the date is set between the hours of around 9:00 PM and 1:00 AM, the date may not change on the following day.
3. After the date has been set, push the crown back to the Normal position.

This drawing is provisional and subject to our reconfirmation and/or revision without notice.

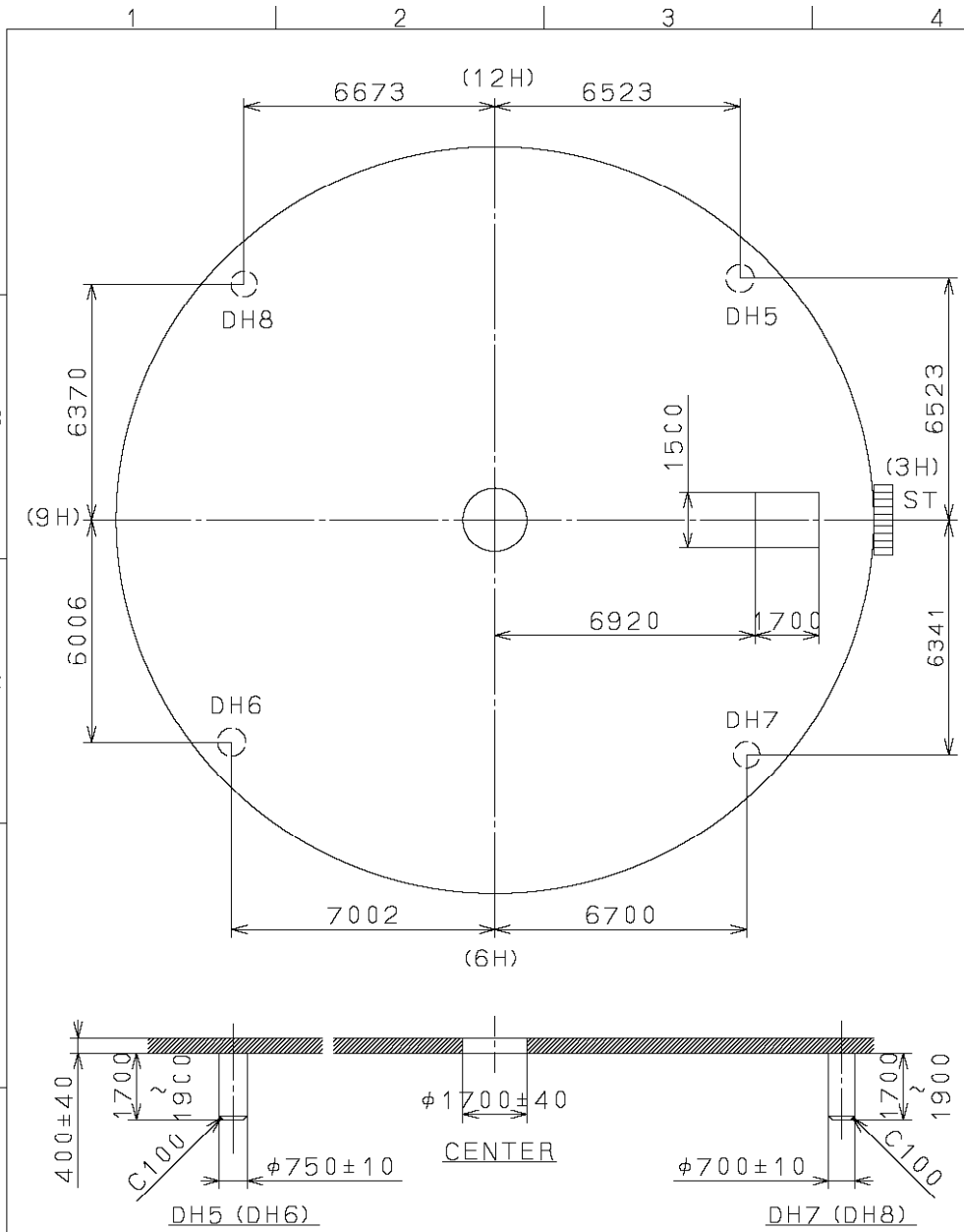


Quantity	1/1000mm	Cal. No.: GN10
Unit	10/1	Parts No.:
Scale	Date	Drawn Name:
Drawn	Checked	M. Fukuda Name:
Material	Approved	Frame for Case
Material	General Tolerances	Drawing No.: GN10C003
Hardness		
Dimensions		
Plating		

CITIZEN WATCH CO., LTD. TOKYO, JAPAN

2005/01/20 (17:44:09)

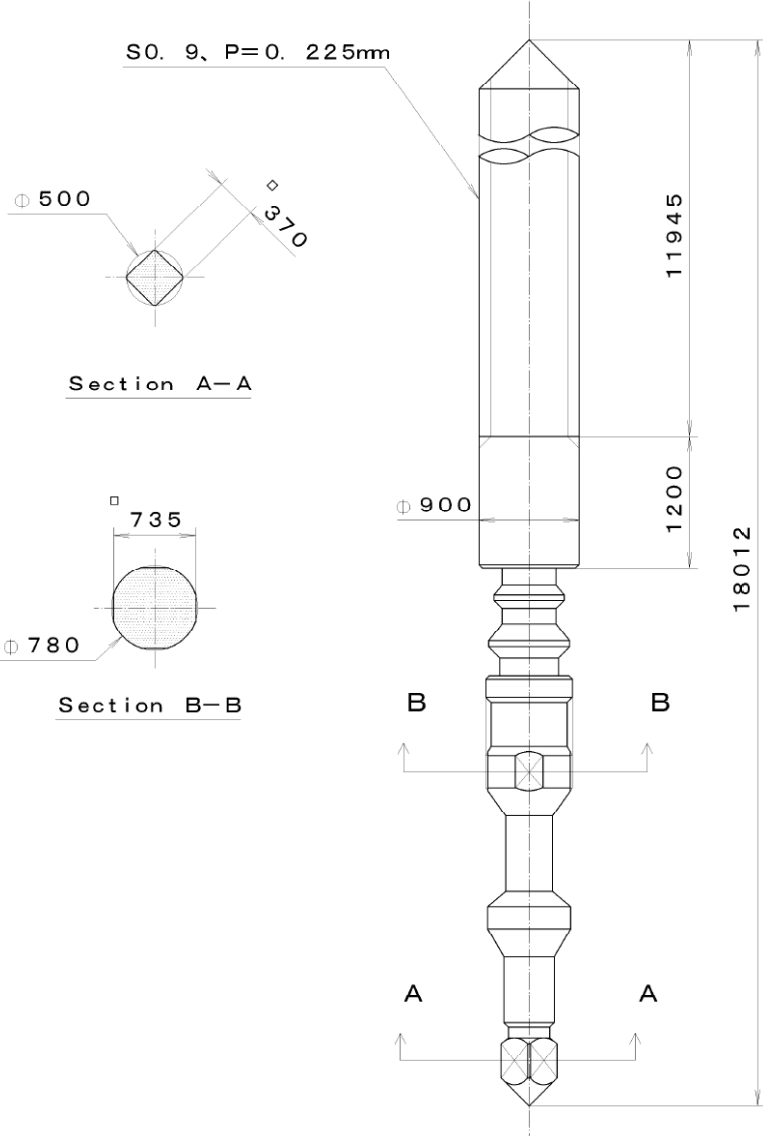
This drawing is provisional and subject to our reconfirmation and/or revision without notice.



△				Quantity		Cal.NO.:GN10-00A
△				Unit	1/1000mm	
△				Scale	7/1	Parts No.:
△				Drawn	Date	Name
△				Checked	M.Fukuda	Name:
	Alterations		Approved			Indications for Dial
Material						Drawing No.:GN10D000
Heat Treatment				General Tolerances		
Hardness				Dimensions		
Plating				Angles		CITIZEN WATCH CO.,LTD. TOKYO,JAPAN

This drawing is provisional and subject to our reconfirmation and/or revision without notice.

065-547 (01) \*\*\* (2100 1121) 02-07-12



Quantity		Cal. No. :
Unit	1/1000 mm	Parts:
Scale	20:1	
Date		065-547
Drawn		
Checked	T. Hiruta	Name:
Approved		SETTING STEM
Material		Drawing No. : 5470S000
Heat Treatment		<b>CITIZEN</b> WATCH CO., LTD. TOKYO, JAPAN
Hardness		
Plating		
General Tolerances		
Dimensions		
Angles		