

# MIYOTA

## MOVEMENT SPECIFICATIONS CAL. GP SERIES ANALOG QUARTZ MOV'T

BY CITIZEN WATCH CO., LTD.

### DUAL TIME / BIG DATE / SMALL SECOND / DOUBLE RETROGRADE

MANUFACTURED IN JAPAN

#### 1. BASIC SPECIFICATION

(1) CAL. NO.

CALIBRE	<b>GP00</b>	<b>GP01</b>	<b>GP30</b>	<b>GP10</b>	<b>GP11</b>	<b>GP50</b>
						
	RETROGRADE DUAL TIME		BIG DATE	SMALL SECOND AND BIG DATE		DOUBLE RETRO
Ligne	12'''					
Size	Φ 27.0mm , 25.0mm(3H-9H)					
Total height	4.40mm					3.80mm
Hands	4		3			5
Date	12H	3H	12H		3H	12H RETROGRADE
Battery life	3 Year					
Battery	SR920SW or equivalent					

(2) Time standard

Type of quartz : Tuning fork type quartz crystal  
Frequency : 32,768Hz  
Accuracy : +/-20 s/month worn under normal circumstances

(3) Battery installed

Type of battery : Silver oxide SR920SW or equivalent

(4) Others

Driving systems : Two-pole stepping motor

(5) Balanceable weight of hand

**Minute hand**      **Max. 1.00  $\mu\text{N}\cdot\text{m}$**   
**Second hand**    **Max. 0.08  $\mu\text{N}\cdot\text{m}$**   
**Retrograde hand** **Max. 0.14  $\mu\text{N}\cdot\text{m}$**

(6) Additional Mechanisms

Calendar : Date disk at 12H(GP00/GP30/GP10) or 3H(GP01/GP11)  
Date hand at 12H(GP50)

Calendar correction : Pull out the crown to the first click position,  
turn crown clockwise.  
\*If the date is set between 9:00 PM and 2:00 AM,  
the date may not change on the following day.

2nd time(GP00/GP01/GP50) : 24 hour hand at 6H (by Retrograde)

2nd time correction( " ) : Pull out the crown to the first click position,  
turn crown counter-clockwise.

Power conservation switch : Pull out the crown to the second click position

Second hand stopping devi : Pull out the crown to the second click position

## 2. SEPARATED PARTS

\* Setting stem 065-992  
Length of movement center to stem end. 23.00mm  
Thread.....  $\Phi 0.9 \times 10.5\text{mm}$

## 3. Others

### \* Measurement of time rate

The unit(gate) time of measurement must be set at "10s " or integer fold value of 10s owing to the DFC system, and the measurement must be performed in the form of complete watch.

### \* Marking on movement

**MIYOTA CO. UNADJUSTED  
NO JEWEL JAPAN GP\*\***

### \* Typical clearance

Mov't - Caseback minimum 200  $\mu\text{m}$  or more  
Top of hands - Glass 300 - 400  $\mu\text{m}$  \*

\* depending and subject to the glass and case structure, and hand length

## 4. Notice Of Casing

The interval between Dial and Glass end should be 150  $\mu\text{m}$  to avoid breakage under drop.

## 5. Setting Instructions

### (1) Setting the date (Quick change function)

Pull the crown out to the first click position and set the date by rotating the crown backward.

If the date is set between 11:00 PM and 3:00 AM, the date will not change correctly.

### (2) Setting the normal time

Pull the crown out to the second click position when the second hand reaches the 12 o'clock position so that the second hand stops there.

Then set the hour and minute hands.

When setting the minute hand, put it 4 to 5 minutes earlier than the time to be set, and then turn it back to the correct time.

Note: The day is changed during the period from about 0:00 AM to about 5:30 AM.

After the time is set, push the crown back simultaneously with the time signal.

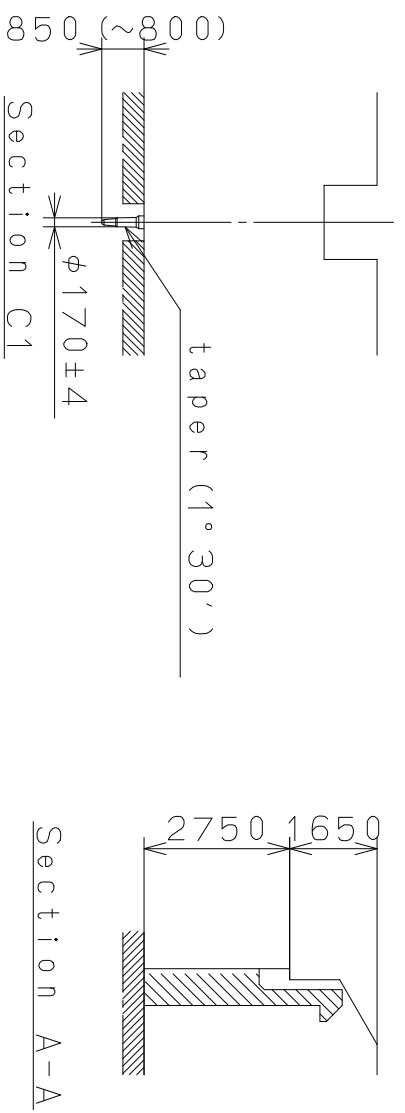
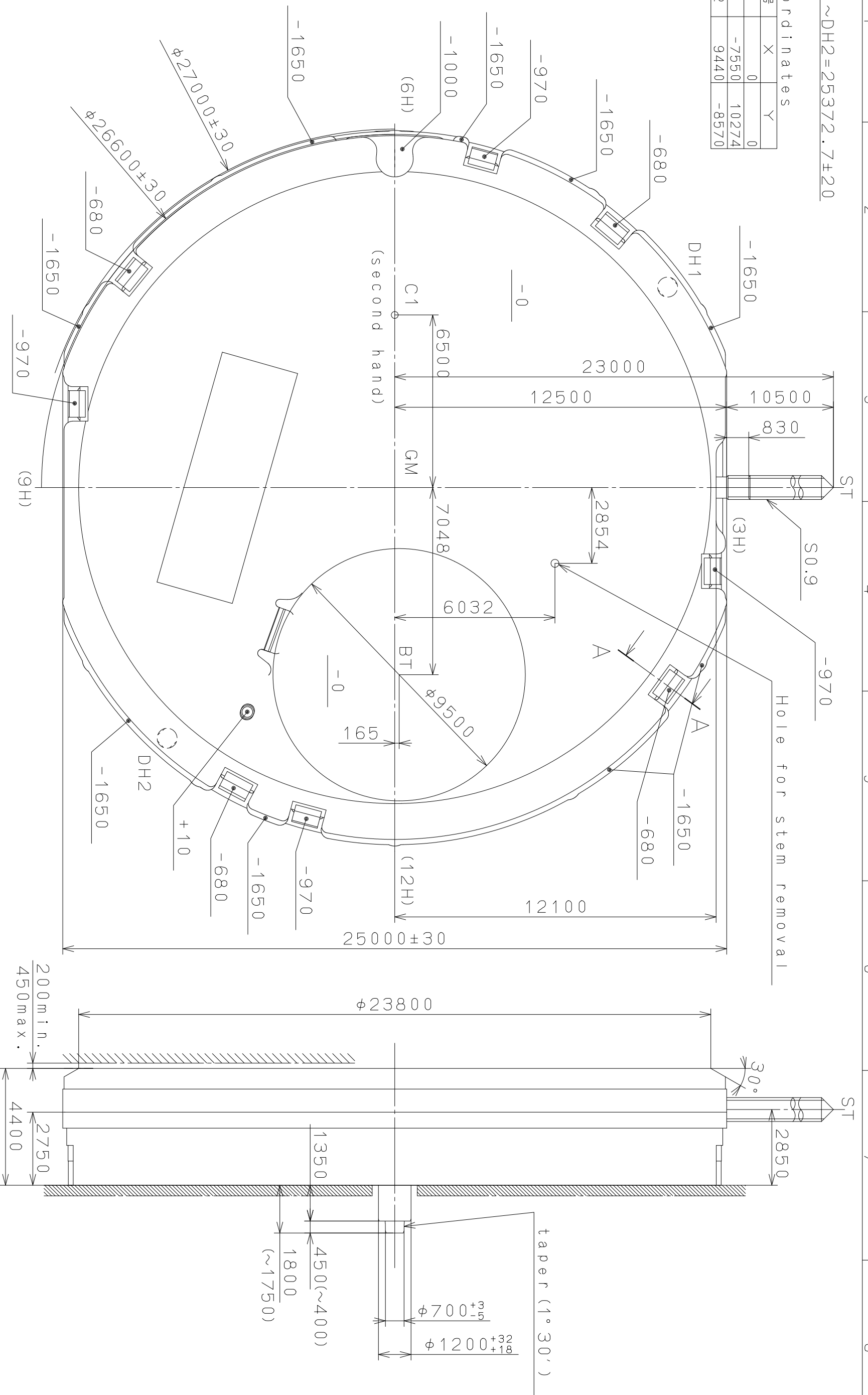
The second hand will start running at the same time.

*This specifications might be changed without prior notice.*

Coordinates

記号	X	Y
GM	0	0
DH1	-7550	10274
DH2	9440	-8570

DH1~DH2=25372.7±20

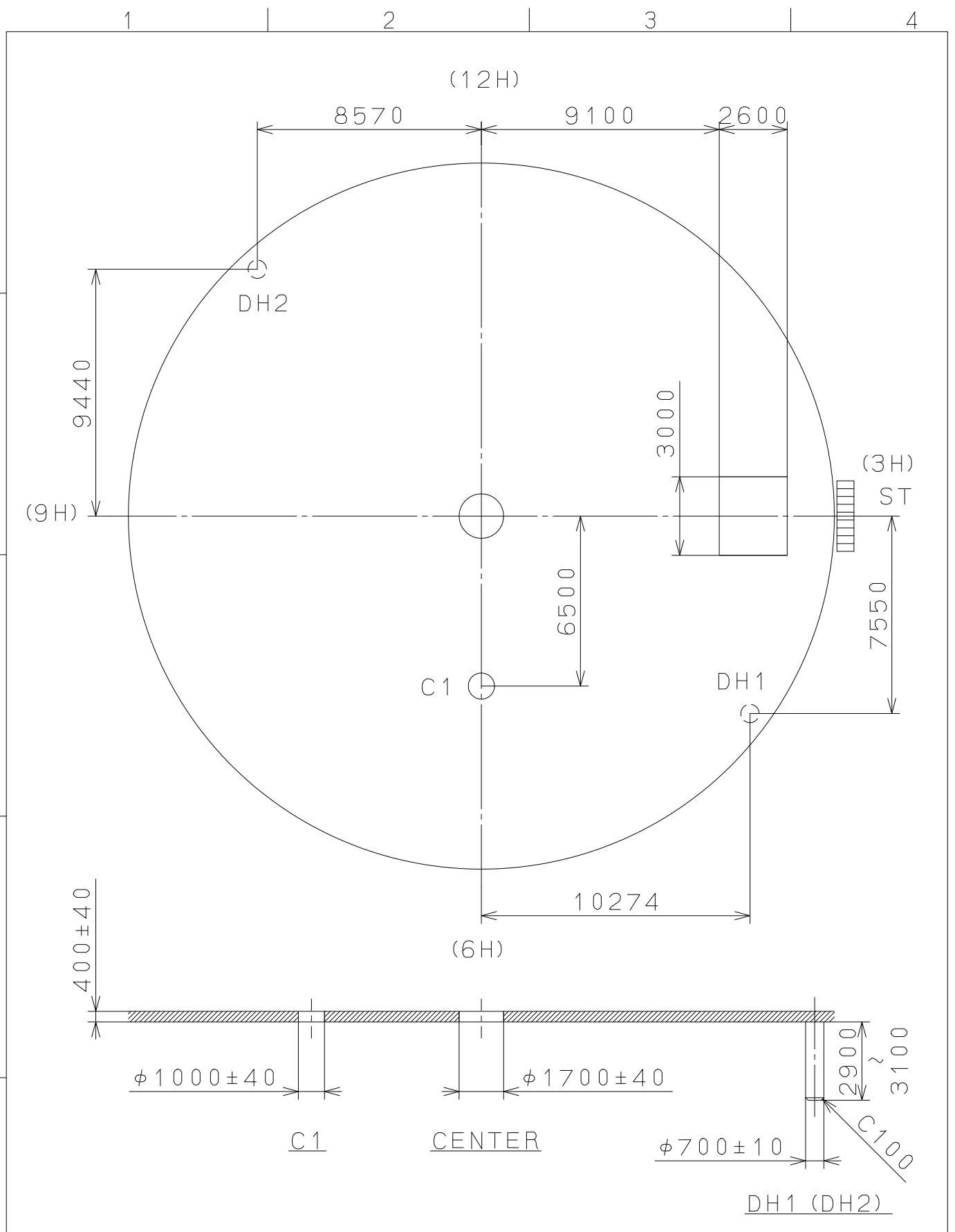


Quantity	Unit	Cal. NO.:
1	1/1000 mm	GP11
Scale	7:1	Parts No.:
Date		
Drawn		
Checked		
Approved		
Material		
Heat Treatment		
Hardness		
Plating		
Alterations		
Date		
Description		
Appro.		
Checked		
Drawn		
Approved		
Material		
Heat Treatment		
Hardness		
Plating		
General Tolerances		
Dimensions		
Angles		

Name: M. Fukuda  
 Frame for Case  
 Drawing No.: GP11C000  
**MIYOTA**  
 CITIZEN WATCH CO., LTD. TOKYO, JAPAN

2009/05/07 (11:18:39)

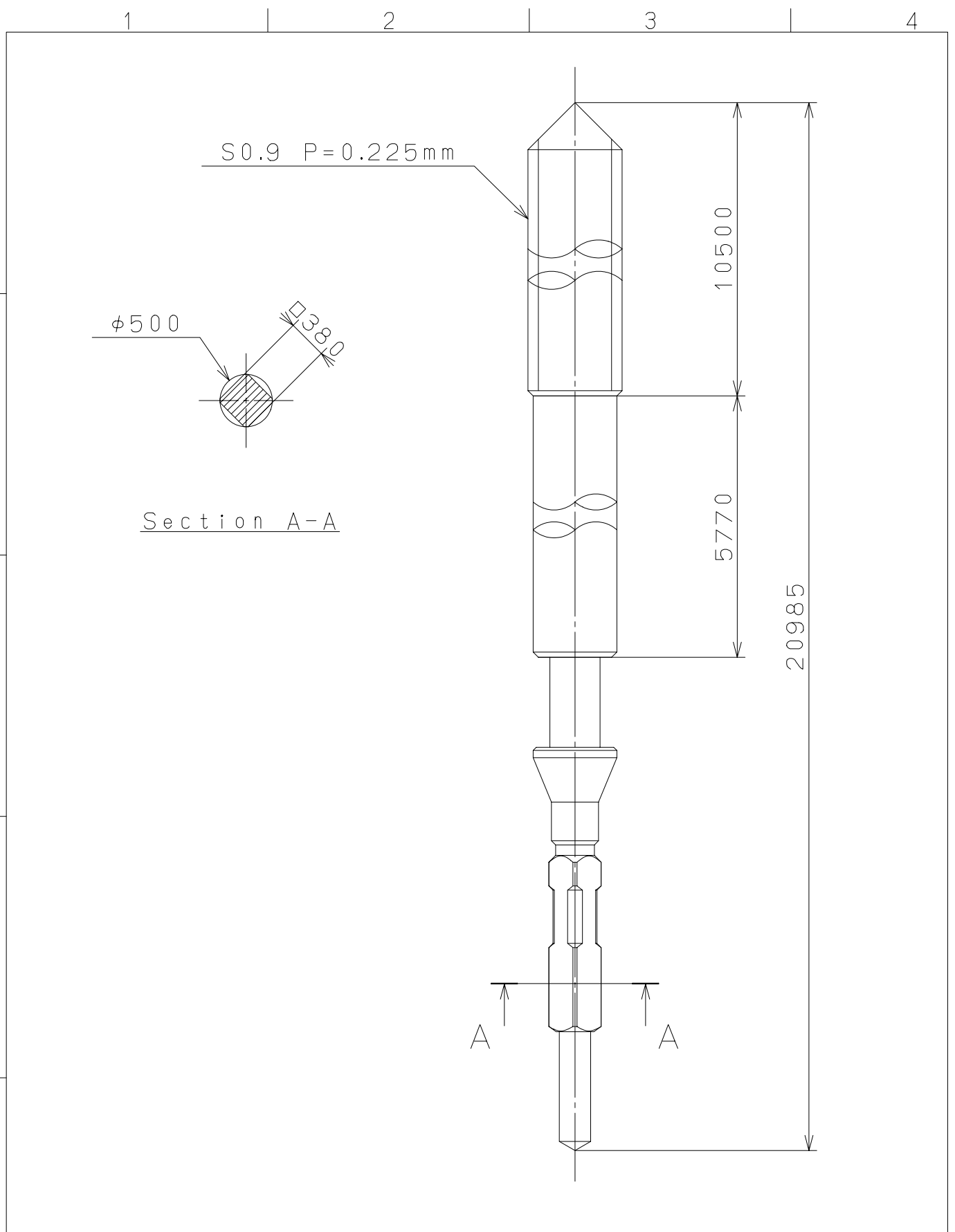
This drawing is provisional and subject to our reconfirmation and/or revision without notice.



△			Quantity		Cal.NO.:
△			Unit	1/1000mm	GP11-00A
△			Scale	5:1	Parts No.:
△			Date		
△			Drawn		
Mark	Date	Description	Appr.	Checked	M. Fukuda
Alterations			Approved	Name:	
Material					Indications for Dial
Heat Treatment					Drawing No.: GP11D000
Hardness					<b>MIYOTA</b>
Plating					

2005/02/01 (17:07:32)

This drawing is provisional and subject to our reconfirmation and/or revision without notice.



△			Quantity			Cal.NO.:
△			Unit	1 / 1000 mm		
△			Scale	20 / 1		Parts No.:
△				Date	Name	065-992
△			Drawn			
Mark	Date	Description	Appr.	Checked	M. Fukuda	Name:
Alterations			Approved	SETTING STEM		
Material						Drawing No.: 9920S000
Heat Treatment	General Tolerances					
Hardness	Dimensions					
Plating	Angles					CITIZEN WATCH CO., LTD. TOKYO, JAPAN