

# MIYOTA

# STOPWATCH

MOVEMENT SPECIFICATIONS

**CAL. : JS00**

**12-1/2 LIGNE, 3 EYES WITH STOPWATCH FUNCTION**

**ANALOGUE QUARTZ, NO JEWEL**

BY CITIZEN WATCH CO., LTD. JAPAN

MANUFACTURED IN JAPAN

## 1. BASIC SPECIFICATIONS

(1) Cal. No.

\*TO CONFIRM WITH MOV'T DRAWING ATTACHED

CALIBRE	JS00
Ligne	12-1/2
Overall diameter	Φ28.2 × 26.0 (3H-9H)
Case fitting diameter	Φ27.6 × 26.0 (3H-9H)
Date	X
Total height	4.18mm
Battery life	Approx. 2 years*
Battery	SILVER OXIDE SR621SW or equivalent

(\* 30 minutes chronograph operation per day)

(2) Time standard

Type of quartz : Tuning fork type quartz crystal

Frequency : 32,768Hz

Accuracy : **+/-20 s/month** worn under normal circumstances

(3) Balanceable weight of hand

Minute hand : Max. 0.4 μN.m

Second hand : Max. 0.09 μN.m

Other small hands : Max. 0.02 μN.m

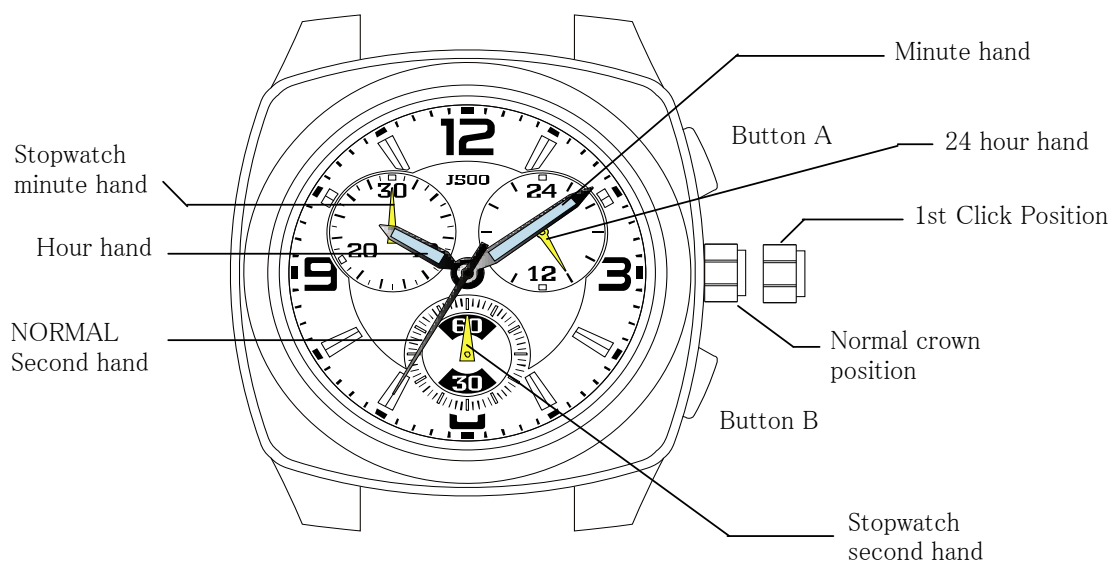
(4) Function

Stopwatch 1 sec. basis (Up to 29 min. 59 sec.)

Powercell Saving Reset Mechanism (PSRM)

Over-loading Compensation Device (OLCD)

Digital Frequency Control (DFC) for time adjustment



**Button A : START / STOP**

**Button B : RESET**

**1st Click Position : TIME ADJUSTMENT / REFERENCE POSITION ADJUSTMENT**

**2.SEPARATED PARTS**

**Setting stem x1**

Code	065-505
Length from movement center to far end of setting stem	20.03mm
Thread.....	Φ0.9mm x 11.68mm

**3.OTHERS**

**\* Measurement of time rate**

The unit (gate) time of measurement must be set at "10 sec." or integer fold value of 10 sec. owing to the DFC system, and the measurement must be performed in the form of complete watch.

**\* Marking on movement**

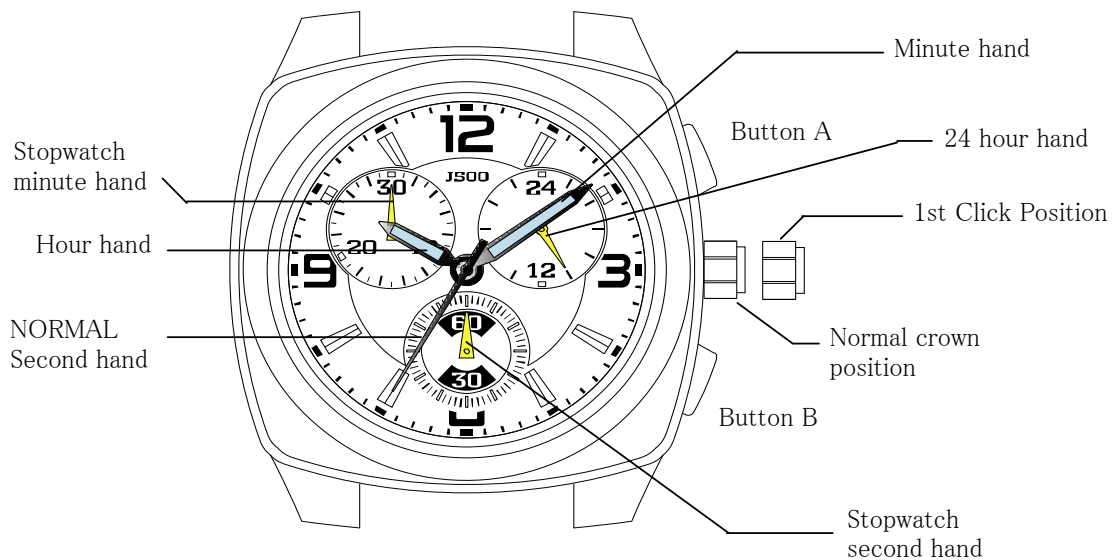
**JAPAN  
MIYOTA CO.  
JS00  
NO JEWELS**

**\* Typical clearance**

Mov't - Caseback	minimum 150 microns
Top of hands - Glass	300 - 400 microns *
* subject to the glass, case structure, and the length of hand	

**4. INSTRUCTIONS MANUAL**

**A) DISPLAYS AND BUTTONS**



**B) SETTING THE TIME**

1. Pull the crown out to the 1st position.
2. Turn the crown to set hour and minute hands.
3. When the crown is pushed back to the normal position in synchronization with a time signal, second hand begins to run.

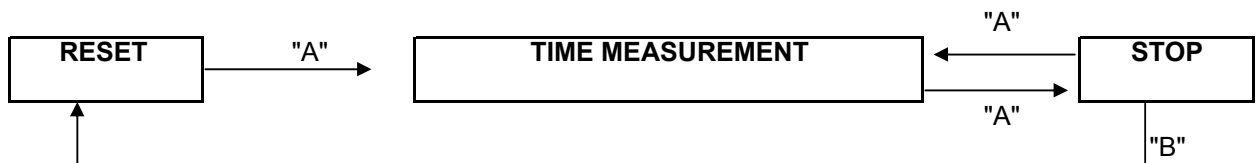
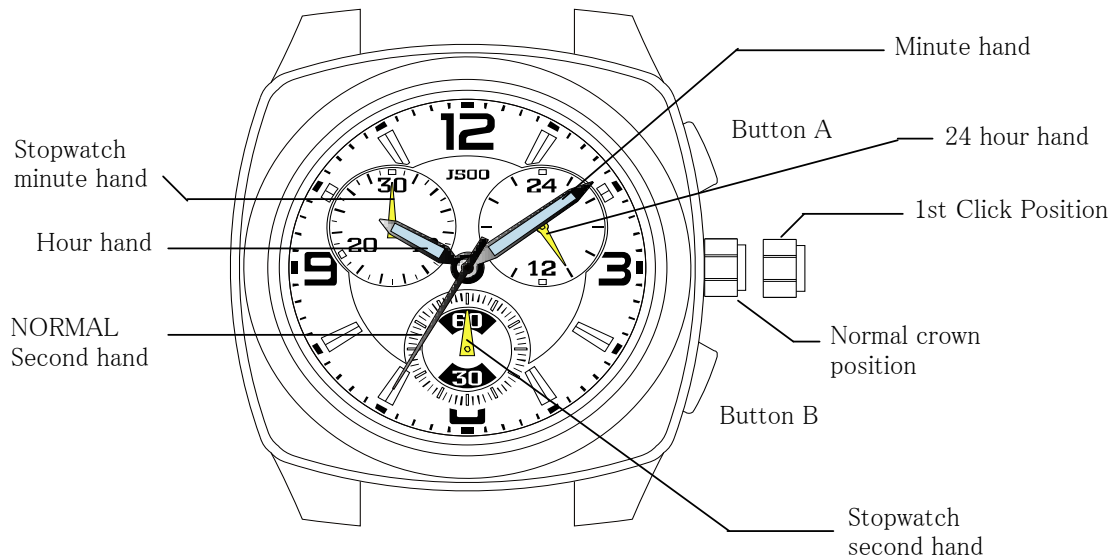
### C) USING THE STOPWATCH

This stopwatch is able to measure and display time in 1 second united up to maximum of 30 minutes. Stopwatch will stop automatically after running continuously for 30 minutes.

Measuring time with the stopwatch

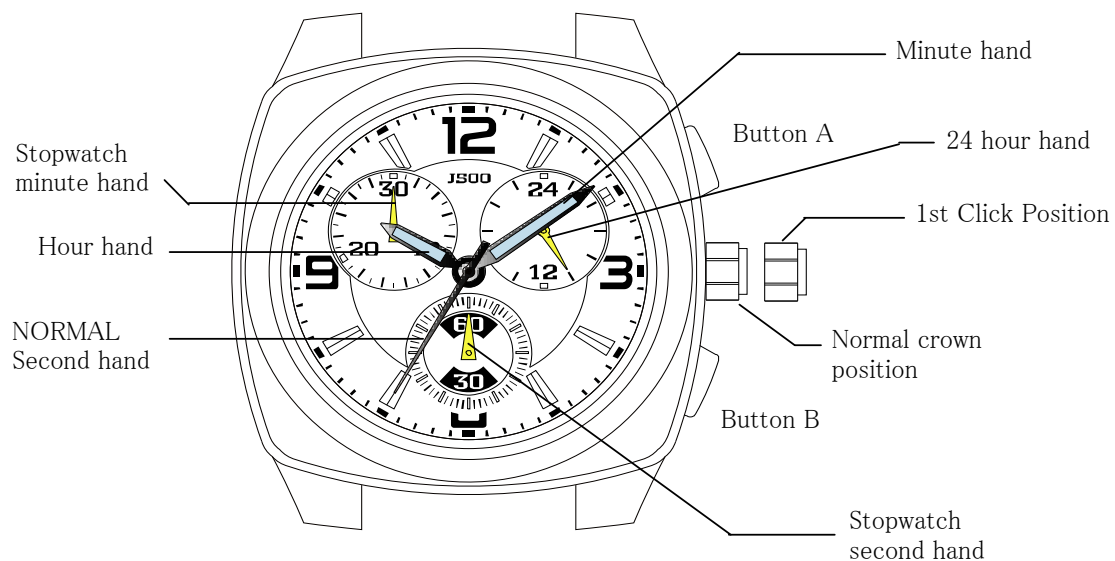
1. Press button "A" to start the stopwatch.
2. The stopwatch can be started and stopped each time button "A" is pressed.
3. Pressing button "B" resets the stopwatch and stopwatch minute and second hands return to their ZERO positions.

**\* Button A / B does not function during resetting the stopwatch.**



### D) STOPWATCH RESET (INCL. AFTER REPLACING BATTERY)

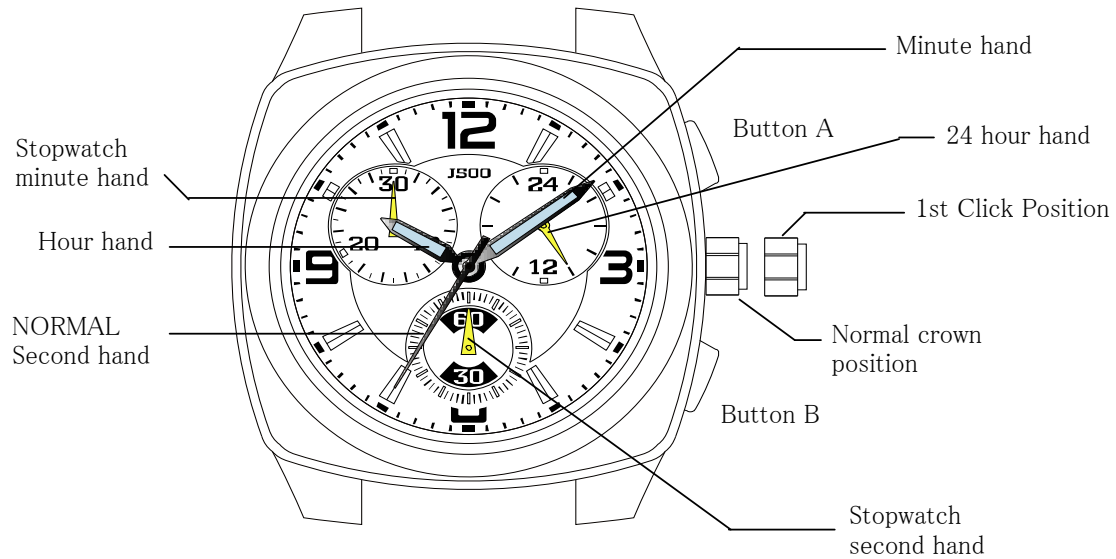
This procedure should be performed when the stopwatch second hand does not return to the ZERO second position after the stopwatch has been reset, and including after the battery has been replaced.



1. Pull the crown out to the 1st click position.
2. Press button "A" to set the stop watch second hand to the ZERO position.
  - \*The stopwatch minute hand is synchronized with stopwatch second hand.
  - \*The stop watch second hand can be advanced rapidly by continuously pressing button "A".
3. Once the hands have been zeroed, reset the time and return the crown to its normal position.

### E) FITTING METHOD OF HANDS

Place the module on case back shown in the figure and position the reference hand, then fit the hands according to the following procedures.



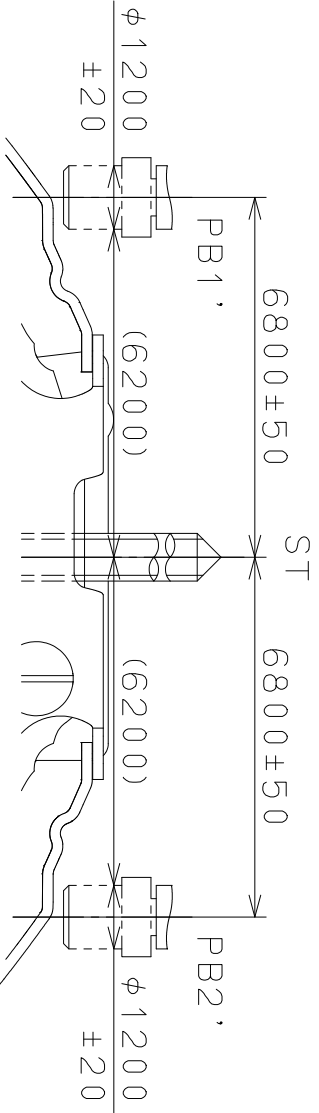
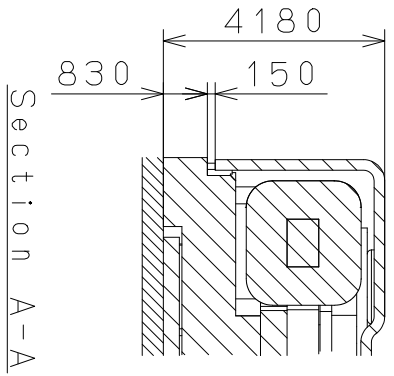
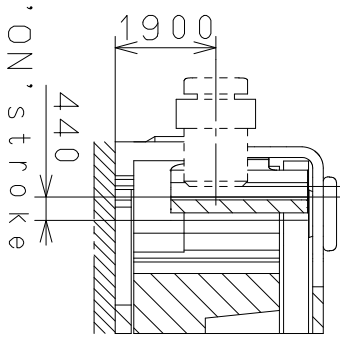
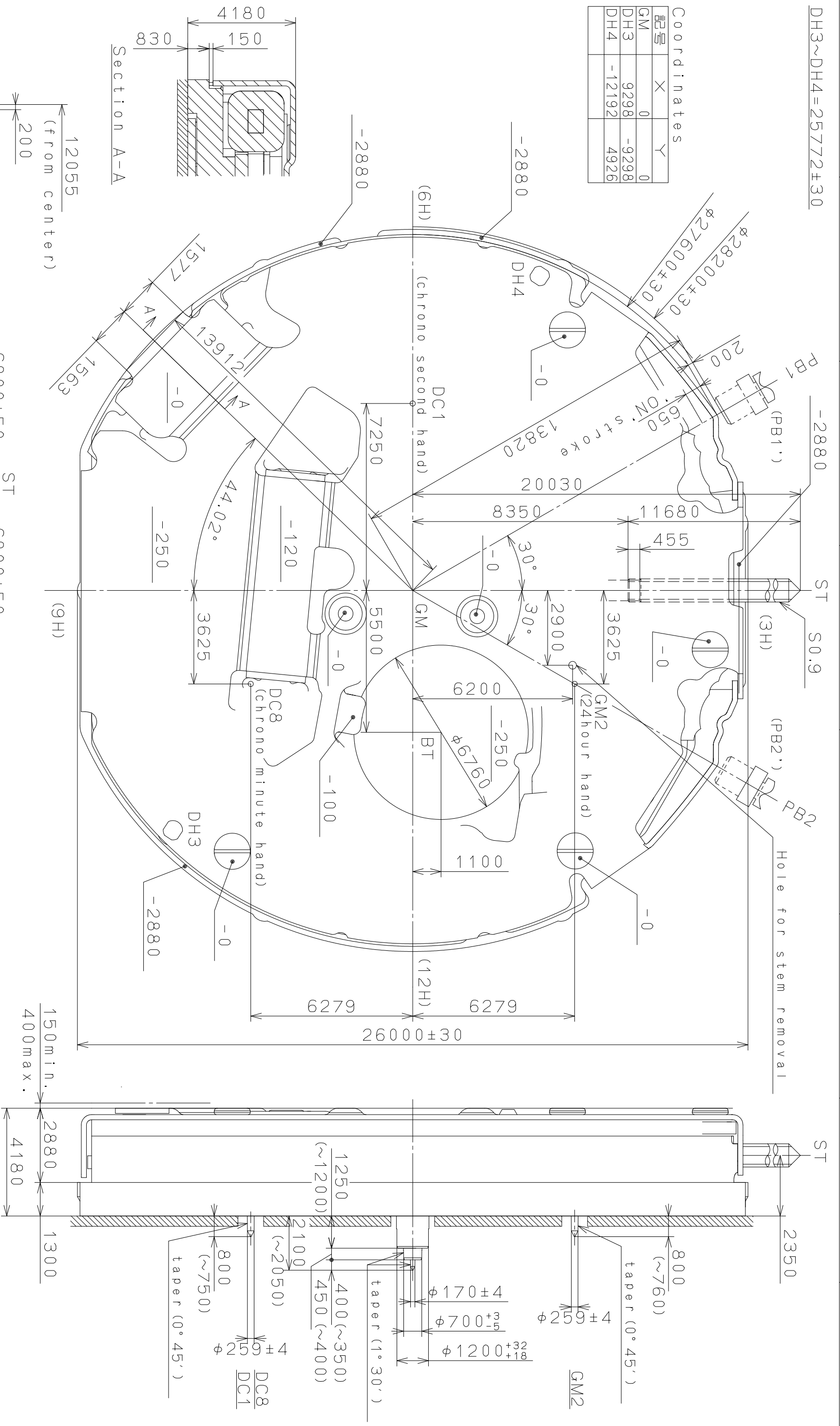
1. Pull out the crown to the time setting position. (1st Click Position)

2. Fit all the hands to the 12-o'clock position.

When fitting the hands, remove the case back and place the movement on work stand (mount).

*These specifications might be changed without prior notice.*

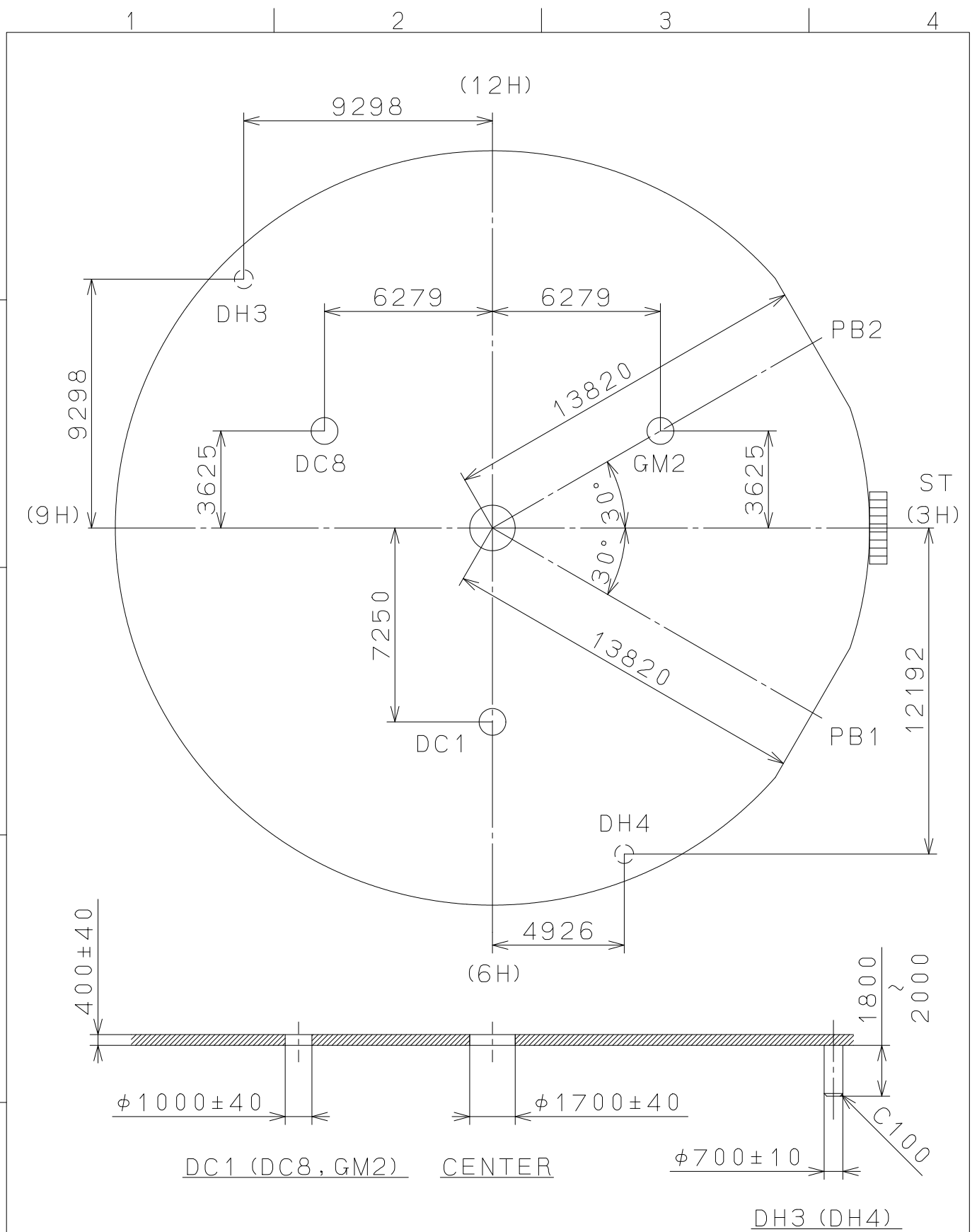
Coordinates		
記号	X	Y
GM	0	0
DH3	9298	-9298
DH4	-12192	4926



150min.  
400max.  
2880  
4180

Quantity	Unit	Cal. NO.:
1	1/1000 mm	JS00
Scale 7 : 1		
Parts No.:		
Date		
Drawn		
Checked		
Approved		
Name: N. Suzuki		
Frame for Case		
Drawing No.: JS00C002		
Alterations		
Material		
Heat Treatment		
Hardness		
Plating		
General Tolerances		
Dimensions		
Angles		

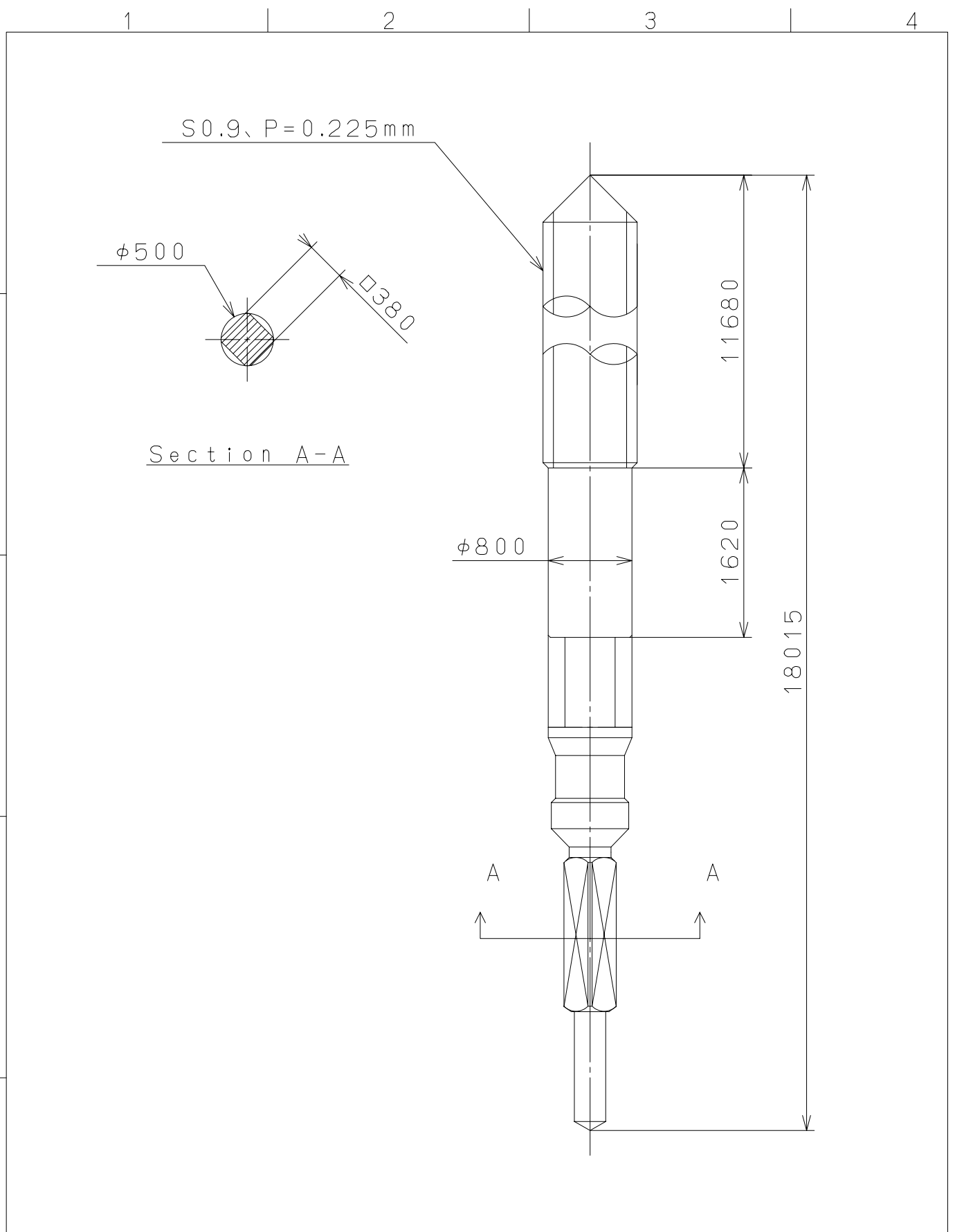
This drawing is provisional and subject to our reconfirmation and/or revision without notice.



△			Quantity		Cal.NO.:
△			Unit	1 / 1000 <sub>mm</sub>	JS00-00C
△			Scale	5 / 1	Parts No.:
△			Date		
△			Drawn		
Mark	Date	Description	Appr.	Checked	M. Fukuda
Alterations			Approved	Name:	
Material					Indications for Dial
Heat Treatment			General Tolerances		Drawing No.: JS00D001
Hardness			Dimensions		<b>MIYOTA</b>
Plating			Angles		

2006/12/25 (07:50:10)

This drawing is provisional and subject to our reconfirmation and/or revision without notice.



⑤			Quantity		Cal.NO.:
④			Unit	1 / 1000 mm	
③			Scale	20 / 1	Parts No.:
②			Date		065-505
①			Drawn		
Mark	Date	Description	Appr.	Checked	Name:
		Alterations		Approved	SETTING STEM
Material					Drawing No.: 5050S000
Heat Treatment				General Tolerances	<b>MIYOTA</b>
Hardness				Dimensions	
Plating				Angles	
					CITIZEN WATCH CO., LTD. TOKYO, JAPAN